

NRA Tax Rebate Incentive

The Unified Government of Wyandotte County/Kansas City, Kansas, under the Neighborhood Revitalization Act (NRA) Program, provides property owners the opportunity to receive a property tax rebate on additional taxes levied as a result of property improvements within designated NRA areas.

The purpose of the tax rebate program is to promote revitalization through the rehabilitation, conservation, or redevelopment of property in order to protect the public health, safety, and welfare of Wyandotte county residents.



For More Information

Stephanie Moore
Management Analyst
(913) 573-5743
smmoore@wycokck.org

Unified Government of
Wyandotte County
Kansas City, Kansas
Department of Economic
Development

701 North 7th Street
Suite 421
Kansas City, KS 66101

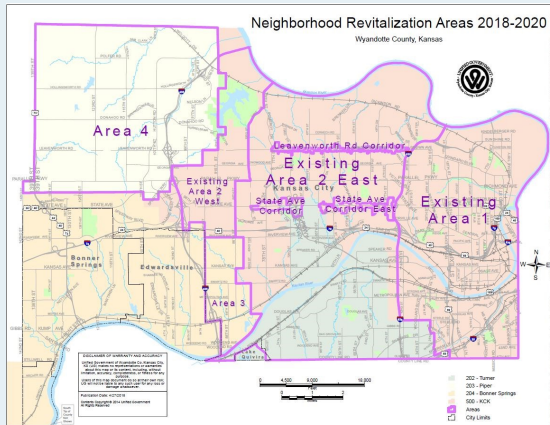
Phone: 913-573-5730
Fax: 913-573-5745

Neighborhood Revitalization Act (NRA) Program



Tax Rebate Incentive Program





General Eligibility Requirements

- Project must be located with a designated NRA project area, refer to map above.
- Applicant must be the legal owner of record of the property.
- Applicant cannot have delinquent property taxes on any property currently owned by applicant in Wyandotte County.
- New as well as existing improvements to the property must conform to all applicable codes, rules, ordinances, and regulations in effect at the time improvements are made, and for the length of the NRA tax rebate, or the rebate may be terminated.

Common Questions & Answers

Q. What type of property is eligible?

A. Residential and/or commercial projects may be eligible to participate in the program; however eligibility is determined by the NRA plan area.

Q. How does the Tax Rebate Program work?

A. The Tax Rebate Program is a refund of the additional taxes paid due to a qualified improvement. The rebate applies only to the additional taxes resulting from the increase in assessed value, the increase must be at least 15% of the property due to improvement. The property taxes prior to the improvement will continue to be payable. Taxes must be paid when due in order for the rebate to be issued. Failure to pay taxes within ninety (90) days will result in termination from the program.

Q. What kind of improvements will increase the assessed value?

A. New construction, additions and major rehabilitation require a building permit and may increase the assessed value. General maintenance and minor repairs of the structure or exterior ancillary work generally will not increase the assessed value; however, several major repairs completed at the same time may qualify to increase the assessed value. Any incremental increase in assessed value will be determined by the County Appraiser's Office.

How Do I Apply

1. An application can be obtained from the Unified Government Economic Development department at 701 N. 7th Street, Suite 421, Kansas City, KS 66101 or online at: <http://www.wycokck.org/Economic/Incentives.aspx>
 2. Submit application and other supporting documentation (as listed in the application), along with any fees, if applicable, to the Economic Development Department.
- NOTE:**
All materials must be submitted prior to any work commencing on the project. Applications submitted after improvements have begun will not be accepted and are ineligible.
3. Additional supporting documentation will be required once the project is complete. Please refer to the application for further details.