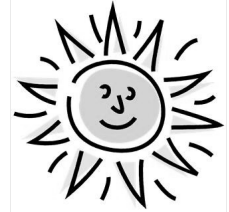




LIVEABLE NEIGHBORHOODS

NEIGHBORHOOD NEWS

JUNE 2011



Liveable Neighborhoods Neighborhood News

Your neighborhood group information can be placed here.

If you would like newsletters made, contact our office at

(913) 573-8737 or email us at

vmLiveableNeighbor@wycokck.org

Would you like a **FREE** checkup
of your child's health and your home?

To qualify, all you need is to:

- Live in the Kansas City Metro area.
- Have a child between 2 and 17 years of age, with asthma, allergies, sinus problems, constant cough, or other constant health problems.
- Your child stays at your home at least 4 nights per week.
- Own your home, or have lived in the same rental unit the last 6 months and plan to be there the next 12 months.
- Meet the HHP Median Family Income Guidelines

The FREE home checkup includes:

checking indoor air quality and ventilation, dust and allergen levels, moisture and mold, a household chemical survey, a home maintenance survey, and a home safety check up. All families will receive a Healthy Home Cleaning Kit that includes a HEPA Vacuum, high quality furnace filters, and a set of healthy home cleaning supplies.

The Kansas City Safe & Healthy Home Partnership presents

The Healthy Home Program

Call the Healthy Home Program at:

816-855-1895

Enroll Now!

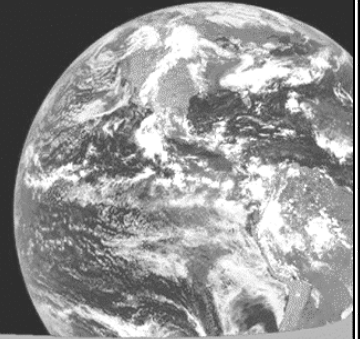
Children's Mercy
HOSPITALS & CLINICS
www.childrensmc.org



catholic  charities
OF NORTHEAST KANSAS

WORLD REFUGEE DAY

June 12, 2011
3:00 - 7:00 PM
2220 Central Avenue
Kansas City, KS 66102



Fun for all!

Celebrate refugees in our community.

Ethnic food

Cultural performances

Activities for kids

-Bounce house, carnival games

Education and advocacy booths

Free for everyone

refugees@catholiccharitiesks.org / 913.906.8982 / www.catholiccharitiesks.org

Scan me!



June Calendar of Events

6/01/2011—7/31/2011

Legends 14 Theatre Free Summer Movies

Legends 14 Theatres 1841 Village West Parkway
 (913) 428-2978 or www.phoenixtheatres.com
 Tuesdays & Wednesday - 10:00am Free
 Free special G and PG rated movies every Tuesday and Wednesday at 10:00am, during the months of June and July.

6/07/2011

Community Needs Assessment Event

Donnelly College (608 North 18th Street)
 RSVP to Demetria Warrior 913-371--3674
 The event will include a brief presentation of the key findings of the Community Needs Assessment administered by the United Way of Wyandotte County and the Economic Opportunity Foundation. A panel of experts will then discuss the implications of these findings and what it means for the community. The event is free and open to the public, but RSVPs are encouraged.

6/11/2011

Movie In The Park : Gulliver's Travels

KCKPL: Argentine Library at the Emerson Park Gazebo
 (913) 722-7400
 8:45pm - 10:30pm Free
 Join us outside the library for a showing of Gulliver's Travels. The movie will start at sunset, and popcorn will be served! Bring your blankets and chairs.

6/17/2010 - 6/18/2010

Juneteenth Celebration

Big Eleven Lake 11th State Avenue
 913-548-8479 or www.juneteenthkck.com
 Fri. 6:00pm - prayer vigil and live bands.
 Sat. 10:00am-6:00pm - parade and celebration
 Free. Come join in the celebration of Juneteenth.

6/17/2011

Adventures In Learning (Shepherd's Center)

First Baptist Church 29th and Minnesota
 913-281-8908 or www.shepherdscenterkck.org
 8:30 a.m. - 1:00 p.m.
 Call for a lunch reservation. Join us for adventures in learning. Meet a friend or make a friend.

6/23/2011

Liveable Neighborhoods Monthly Meeting

Neighborhood Resource Center(4601 State Ave)
 913-573-8737 or www.wycokck.org
 8:30am - 10:00am
 Come and get great community information and share your ideas on how we can continue to improve quality of life in Wyandotte County.



Local Farmers Markets

Buy fresh, buy local!

Rosedale Farmers Market

May 1 to September 25, Sundays 12-3 p.m.
 340 Southwest Boulevard (corner of Rainbow Blvd and Southwest Blvd)

For more information contact:
www.rosedalefarmersmarket.com
info@rosedalefarmersmarket.com or
 913-645-7826

Grinter House Market

June 4 to October 22, Saturdays
 Grinter House Barn 1400 South 78th Street

For more information contact:
grinter@kshs.org
 (913) 299-0373 or

KCK Green Farmers Market

June 1st - September 28th, Wednesdays
 8:00am to sell out

Strawberry Hill (6th and Tauromee)
 Juniper Gardens (3rd and Richmond)
 The market doubles the Senior Vouchers and the SNAP/Vision program.
 For more information contact:
 Rachel at (913) 909-1027

Important Phone Numbers

City questions and complaints	311
Police Non-Emergency	(913) 596-3000
Liveable Neighborhoods	(913) 573-8737
Community Policing	(913) 573-8720
Code Enforcement	(913) 573-8600
Animal Control	(913) 321-1445
BPU	(913) 573-9000
Deffenbaugh	(913) 631-3300
Potholes	(913) 573-8307
Dispute Resolution	(913) 573-5225
Fire Department	(913) 573-5550

Are you depressed?

Do you want to talk to someone?

Where can you turn for support?



Mental Health America of the Heartland presents
Support Groups and Educational Workshops

Heart to Heart Wellness Series
 Faith Deliverance Family Worship Center
 3043 State Ave.
 Kansas City, KS 66102

Support Group meets 1st, 2nd, and 4th Friday of the month from 6:30 – 8:30 p.m. For more information contact: Pastor Harold Johnson at 913-321-5220, ext. 11
 Experienced facilitators offer useful tools for coping with life’s challenges. All events are free and open to the community.

The next workshop, “My Pyramid: Steps to Healthier You” presented by Eugenia Houston will be Friday, June 17, 2011 from 6:30 – 8:00 p.m. at Faith Deliverance Family Worship Center. This free workshop offers ways to eat better and improve your mental health by providing up-to-date information, education and resources on wellness and recovery. These workshops are intended for persons with depression and related mental health conditions. Their families and significant others, as well as care providers, may attend. If interested in childcare and/or more information regarding the workshops, please contact Stacy Davis at 913-281-2221, ext. 112

Christmas In October Is In KCK!



If you need minor home repair services and can not afford it, Christmas in October may be able to help. For more information contact your local Neighborhood Business Revitalization (NBR) organization. If you need contact information for your NBR or do not have an NBR in your area, please contact Liveable Neighborhoods at (913) 573-8737.

Call (816) 333-PETS(7387)

2011 Household Hazardous Waste Collection Days Set

The schedule for the Household Hazardous Waste Collection days for Wyandotte County residents has been set for 2011. The site will be open from 8:30 a.m. to 1:00 p.m. on the following Saturdays: June 18, July 16, August 20, September 17, and October 15. The site is located at 2443 South 88th Street in Kansas City, Kansas. (South on 88th Street from K-32) or (East of I-435 using Woodend exit near Kaw River)

When bringing items to the collection site please label or identify all items. Items accepted include tires (limit of 10 tires and rims need to be removed), motor oil, batteries, antifreeze, degreasers, paints, varnishes, solvents, lawn & garden insecticides/pesticides, and household cleaning products. For additional information call 573-5400.

Public Safety Communications Center to Monitor Safety Device

The Public Safety Communications Center will soon monitor a new safety device worn by individuals who are at risk of becoming lost.

The product, sold by the private company EmFinders, will enhance the Police Department's ability to locate at-risk individuals. The device, which is to be worn like a wrist watch, is designed for elderly individuals with dementia and for juveniles with disorders such as autism. If an individual wearing the product wanders from their home, the caregiver is instructed to call the Police Department to generate a missing persons report. Once the caregiver has a police report number, they place a call to EmFinders to request that the safety unit be activated. Once activated, the unit acts as a cell phone, dials 9-1-1, and gives an automated message that allows the Communications Center to use Phase 2 cell technology to pinpoint the wearer's position.

Source: UG E-News Source to sign up for E-News go to www.wycokck.org

Major Development Projects in Kansas City, Kansas Receives National Recognition

Cerner Campus and LiveStrong Sporting Park Top 10 Deals of 2010

Site Selection, a magazine publication for expansion planning decision makers and service providers, announced last week they selected the *LiveStrong Sporting Park* soccer stadium and *Cerner's* office complex and campus among the top 10 economic development deals in North America.

"Our top deals, like the Cerner Corp. project in Kansas City, are those that will generate the most significant economic impact on their area," says Mark Arend, Site Selection's editor in chief. "We weigh such factors as capital investment, job creation, negotiation attributes, competition for the project and regional impact. Areas attracting these projects will benefit for years to come."

The \$414-million development deal will create 4,000 new healthcare technology jobs at an average salary of \$54,000 a year and in addition to several thousand jobs connected with the sports stadium. Sporting Kansas City's home opener is scheduled on June 9th and construction on the 3 building office complex is schedule late this year.

"This ranking for Kansas City, Kansas and Wyandotte County is further evidence of our ongoing emphasis to create public/private partnerships that grow our local economy and provide new job opportunities to our community," Mayor/CEO Joe Reardon said.

This newest ranking by Site Selection magazine follows recent national rankings from the Associated General Contractors of America's 3 ranking of Kansas City, Kansas for new construction jobs and the Bureau of Labor Statistics 11th ranking of Wyandotte County for the percentage of new jobs created. The announcement also comes on the heels of Google's selection of KCK as their site for the deployment of ultra-high speed internet fiber.

"I applaud the collaborative effort that has made us successful from the Board of Commissioners, our Unified Government staff and the business community. We remain focused on making every effort to grow our city and county in a way that leads to a positive dynamic for our residents," said Reardon.

The Kansas City Area Development Council also received an honorable mention for the category of Economic Development Groups of 2010. Other categories included 2010 Competitiveness Award Winner and Top Economic Development Groups.

Site Selection is published bi-monthly in Norcross, Ga. The magazine's Top North American Deals of 2010 (in alphabetical order by company)

Click here for more information on Top Deals of 2010: <http://www.siteselection.com/>.

Source: UG E-News Source to sign up for E-News go to www.wycokck.org