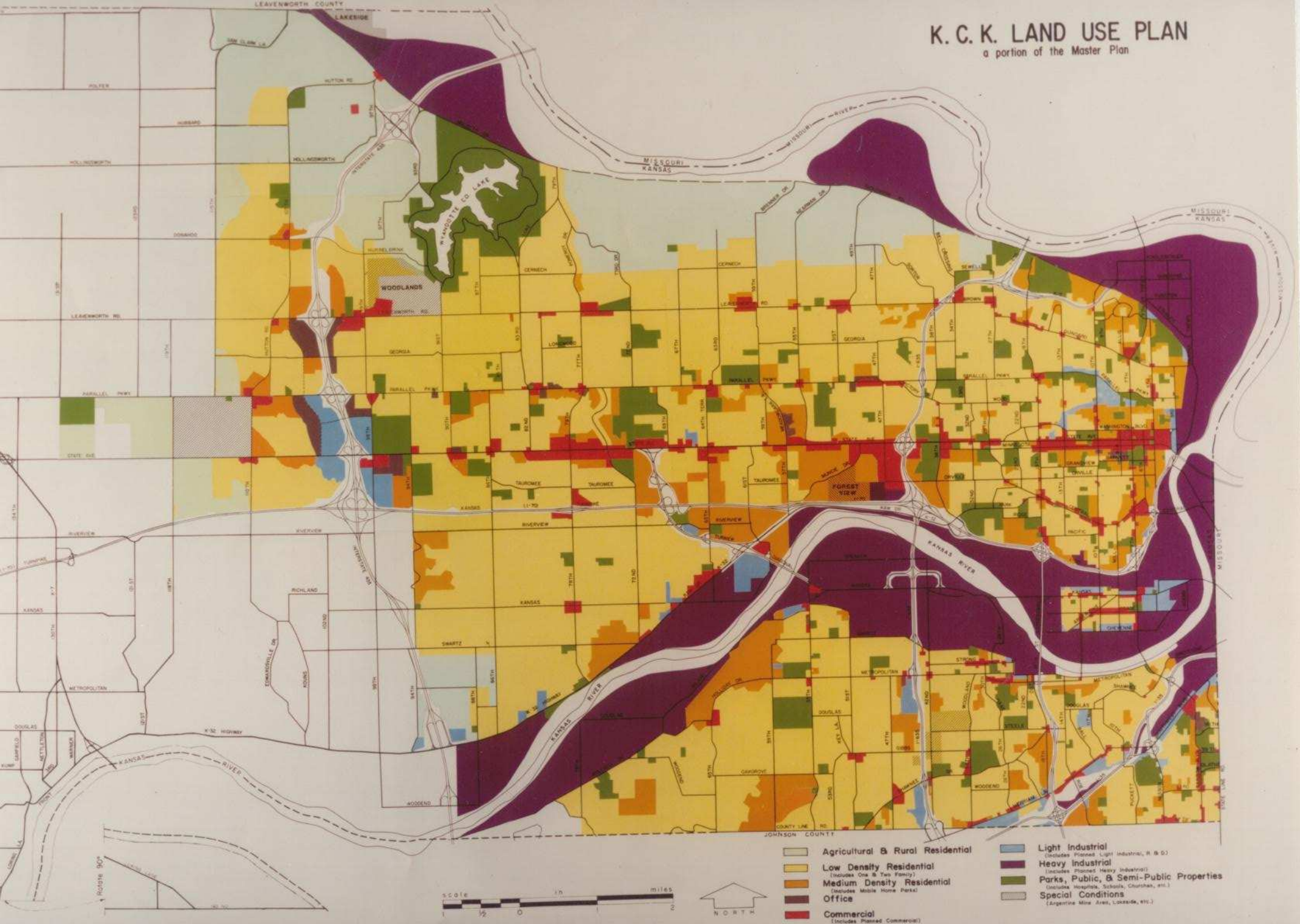







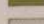

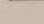

# K. C. K. LAND USE PLAN

a portion of the Master Plan



PLAN AMENDMENT DATE: 11-13-89



- |   |  |   |  |
|---|--|---|--|
|  | <b>Agricultural &amp; Rural Residential</b>                                      |  | <b>Light Industrial</b><br><small>(Includes Planned Light Industrial, R &amp; D)</small>                           |
|  | <b>Low Density Residential</b><br><small>(Includes One &amp; Two Family)</small> |  | <b>Heavy Industrial</b><br><small>(Includes Planned Heavy Industrial)</small>                                      |
|  | <b>Medium Density Residential</b><br><small>(Includes Mobile Home Parks)</small> |  | <b>Parks, Public, &amp; Semi-Public Properties</b><br><small>(Includes Hospitals, Schools, Churches, etc.)</small> |
|  | <b>Office</b>  |  | <b>Special Conditions</b><br><small>(Argentine Mine Area, Lockside, etc.)</small>                                  |
|  | <b>Commercial</b><br><small>(Includes Planned Commercial)</small>                |   |  |

Note: This is a generalized plan. Please refer to area plans for specific parcel information.