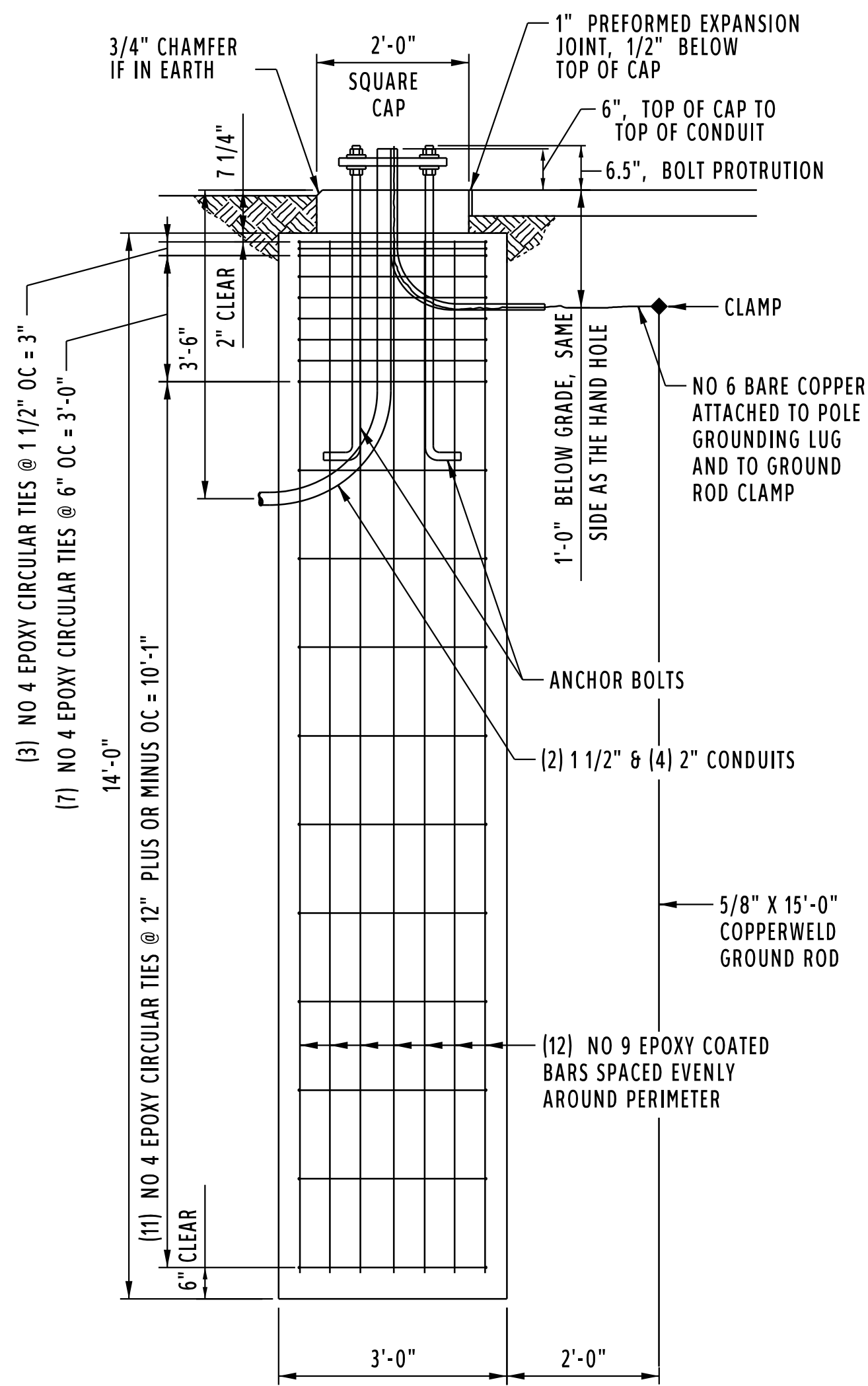


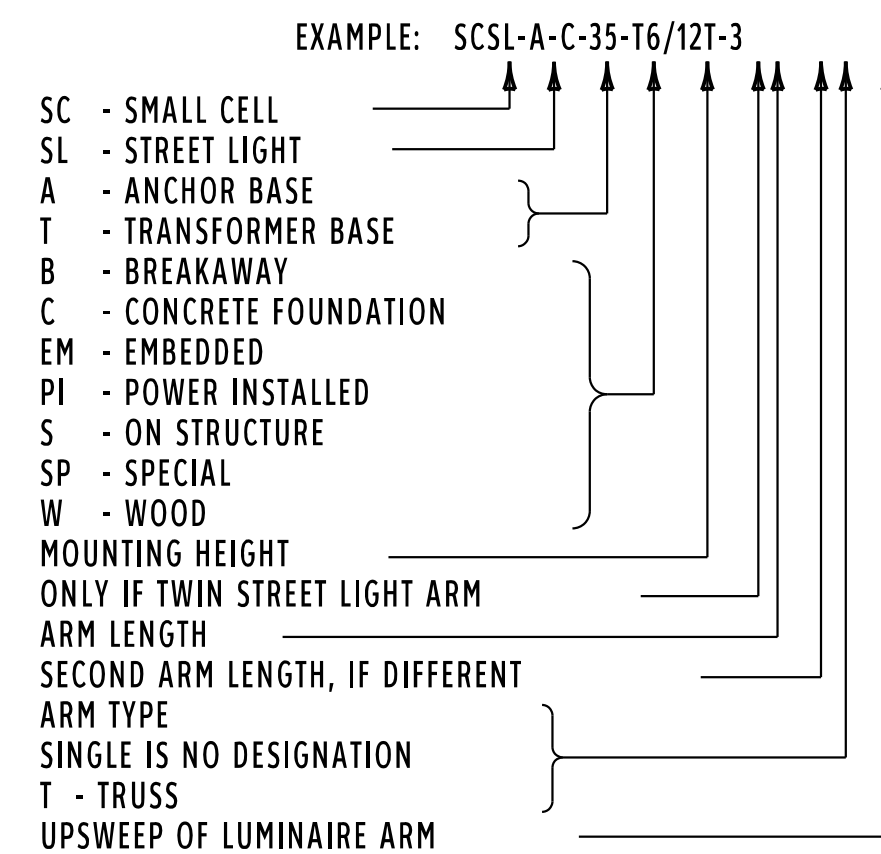
SMALL CELL STREET LIGHT POLE FOUNDATION FOR TYPE A AND TYPE B POLES, TOP VIEW



SMALL CELL STREET LIGHT POLE FOUNDATION FOR TYPE A AND TYPE B POLES, ELEVATION

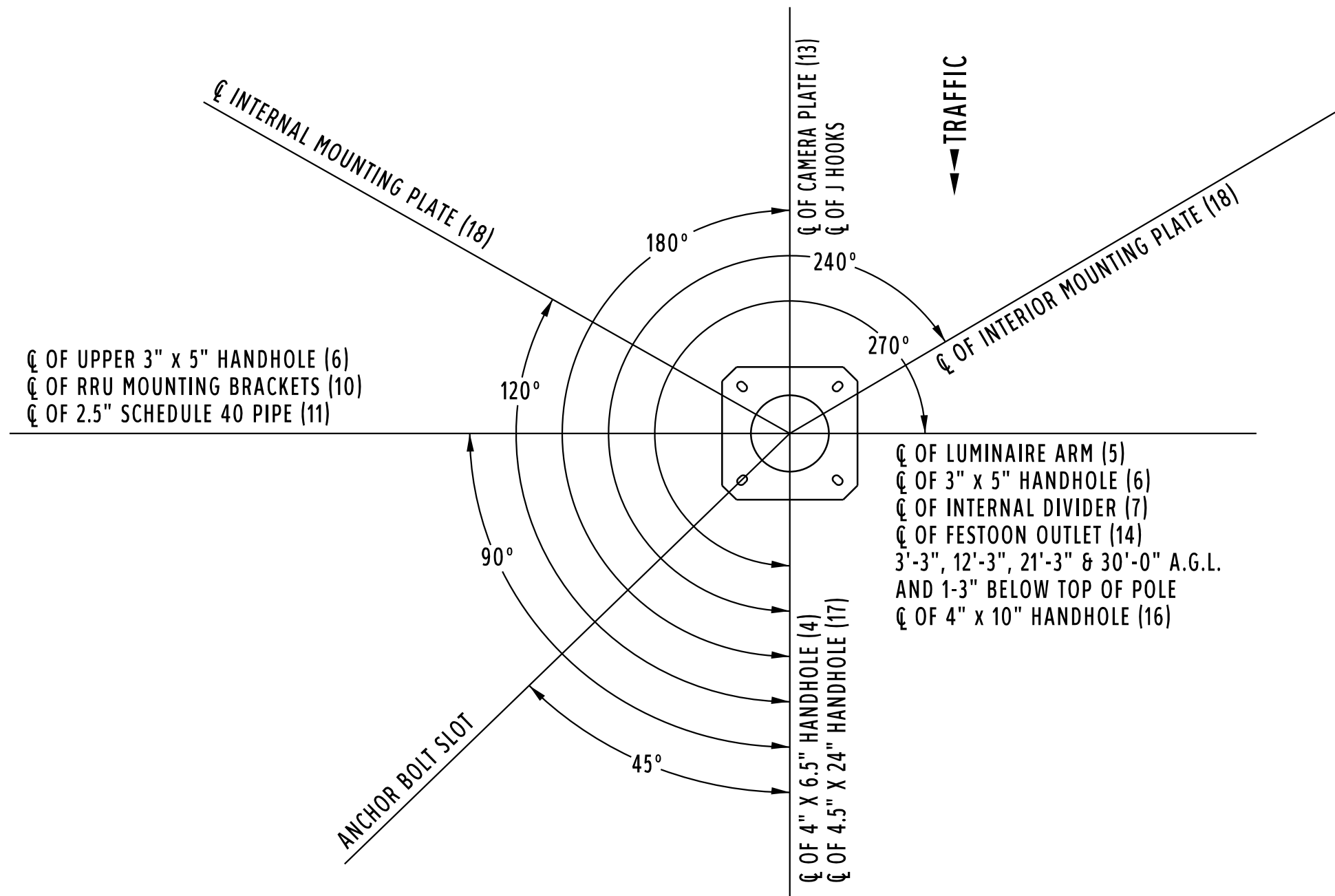
NOTES:

1. FINISH FOR TYPE A POLES SHALL BE GALVANIZED (GV) WITH BASE COAT OF HOT DIP GALVANIZED TO ASTM A123 TO SPEC F-1. FINISH FOR TYPE B POLES SHALL BE TGIF OR URETHANE POLYESTER POWDER, COLOR WHITE SILVER METALLIC TO SPEC F-590FK.
2. POLES SHALL SUPPORT THE SPECIFIED CAMERA AND ANY OTHER IDENTIFIED ATTACHMENTS. THE CAMERA WITH MOUNTING BRACKET SPECIFIED BY THE UNIFIED GOVERNMENT SHOULD BE UTILIZED IN THE CALCULATIONS.
3. THE DEFLECTION AT THE CAMERA ATTACHMENT SHALL NOT EXCEED 1" IN A 30 MPH (NON-GUST WIND).
4. LESSEE RRUS EQUIPMENT SHALL NOT EXCEED 17.5 CUBIC FEET WITHOUT PRIOR WRITTEN APPROVAL.
5. LESSEE TO PROVIDE AND INSTALL FACTORY TERMINATED PATCH PANEL WITH PIGTAIL, 12-STEP, AT BASE OF POLE, RESULTING WITH 50' PIGTAIL COIL IN NEAREST FIBER PULL BOX.
6. POWER AVAILABLE FOR CITY POLE ATTACHMENT, POWER SUPPLY MODULE TO BE INSTALLED AND POWERED BY LESSEE, SEE DETAIL 16. COMMSCOPE POWER SUPPLY TO BE FURNISHED BY LESSEE. THE POWER DRAW FOR CITY POLE ATTACHMENT SHALL NOT EXCEED 15 AMPS.
7. ANTENNA TO BE MOUNTED AT POLE TOP FOR ALL POLE TYPES. ANTENNA SHALL NOT EXCEED 3 CUBIC FEET WITHOUT PRIOR WRITTEN APPROVAL. PANEL ANTENNAS REQUIRE WRITTEN APPROVAL PRIOR TO INSTALL.
8. LUMINAIRE ARM ATTACHMENT IS 6" BELOW THE TOP OF SHAFT FOR TOP TRUSS ARM OR SINGLE ARM LUMINAIRE. CONTRACTOR TO PROVIDE LUMINAIRE ARM. LUMINAIRE WILL MATCH THE LATEST UNIFIED GOVERNMENT STANDARD SPECIFICATIONS WHEN INSTALLED. COST FOR LUMINAIRE IS LIMITED TO \$250 AND WILL BE INCLUDED IN THE SPECIAL SERVICES CHARGED FOR POLE INSTALLATION.
9. OPTIONAL FINISH COAT AND COLOR DETERMINED BY CITY BASED ON SITE CONDITION.
10. MINIMUM CONCRETE COVER FROM EPOXY COATED BAR TO EDGE OF CONCRETE IS 3", UNLESS OTHERWISE SHOWN.
11. EXPOSED CORNERS OF FOUNDATION SHALL HAVE 3/4" CHAMFER.
12. IF IN WALK, TOP OF FOUNDATION SHALL BE SAME AS WALK WITHOUT CHAMFER.
13. TOP OF FOUNDATION CYLINDER SHALL BE NEATLY FINISHED LEVEL.
14. ALL HANDHOLES TO BE UL CLASSIFIED, FOR POLES GREATER THAN 12'. SEE DETAIL 13 FOR LABEL OR 4, 6, 14 AND 15 FOR HANDHOLE.
15. ALL HANDHOLES AND FESTOON OUTLETS SHALL HAVE A COVER SUPPLIED BY MANUFACTURER WITH A NEC GASKET AND WASHER KIT. IT IS THE RESPONSIBILITY OF THE CONTRACTOR TO PROVIDE MISSING COVERS OR GASKETS CONFORMING TO NEC SPECIFICATION 410.30. THEY SHALL BE RAINPROOF, 3R PER NEC 110.28.
16. USE DESIGN CRITERIA, IBC 2012 WITH 100 MPH DESIGN WIND SPEED FOR TYPE A POLE AND 115 MPH DESIGN WIND SPEED FOR TYPE B POLE.

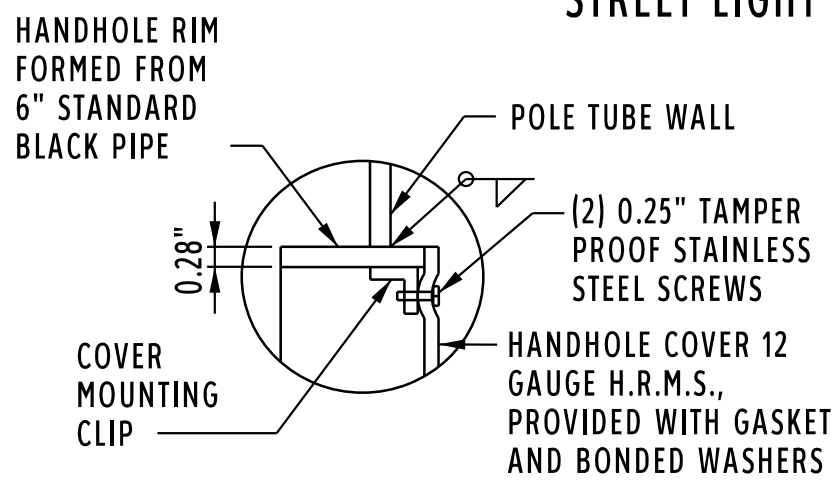


POLE SIZE LEGEND

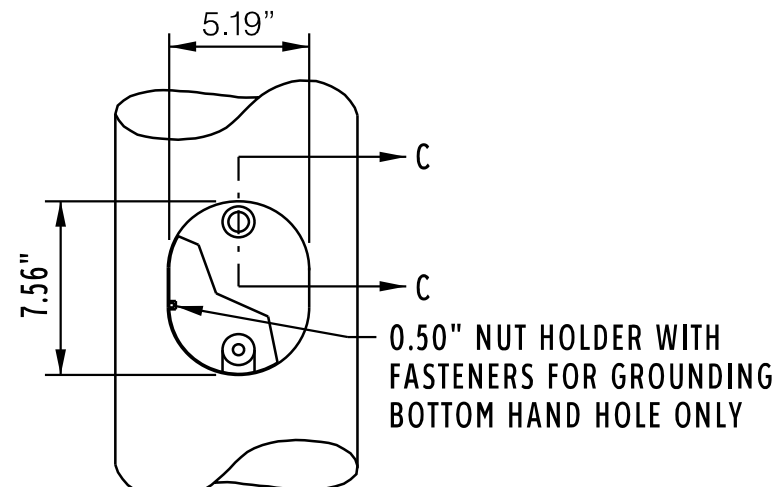
BY				SMALL CELL STREET LIGHT POLES			
REVISIONS				1 OF 4			
DATE				CITY OF KANSAS CITY, KANSAS PUBLIC WORKS DEPARTMENT ENGINEERING DIVISION			
				DESIGNED: — DATE: —			
				CHECKED: KCK DATE: 4/11/19			
				SCALE: N/A SHEET NO.:			



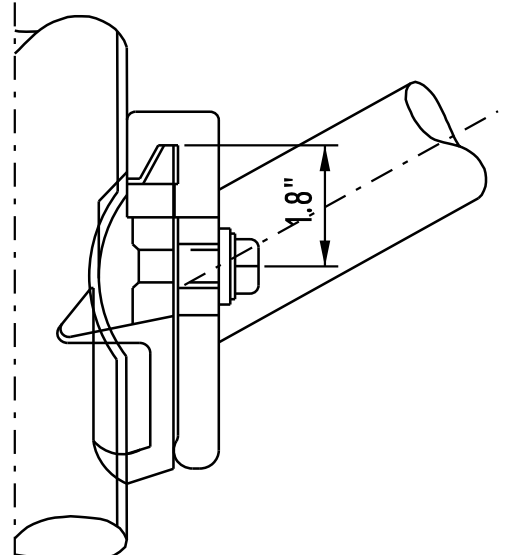
RADIAL INDEX FOR SMALL CELL STREET LIGHT POLE TYPE A POLES



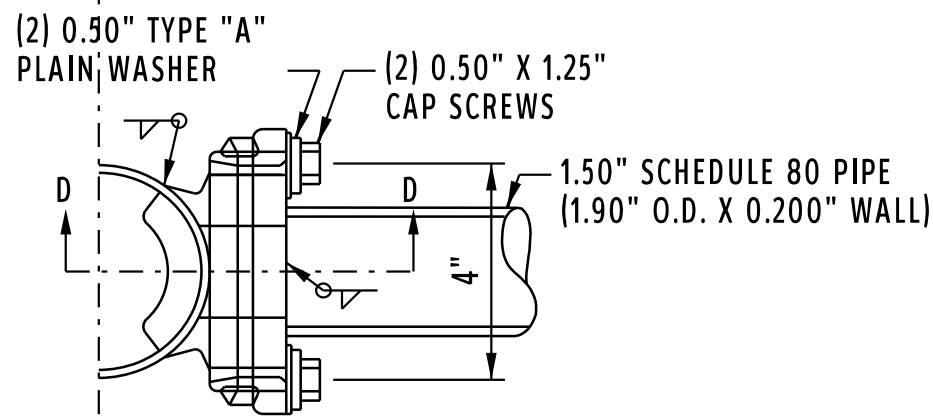
SECTION C-C



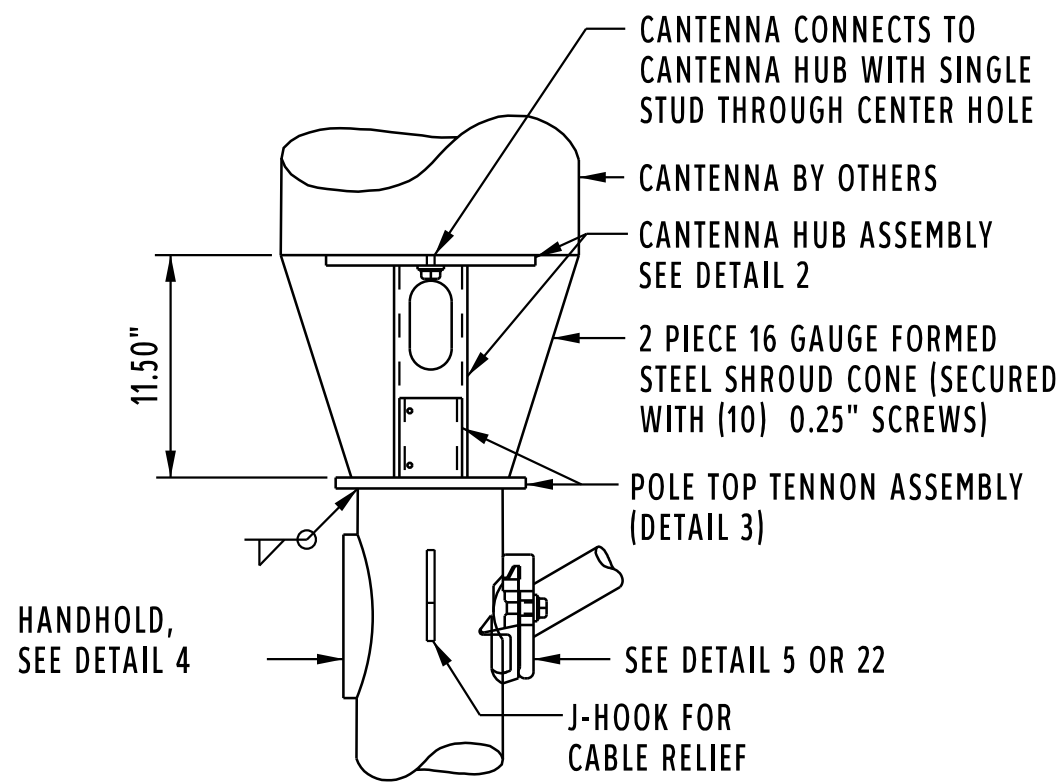
DETAIL 4,
4" X 6.5" HANDHOLE FOR
TYPE A AND B POLES



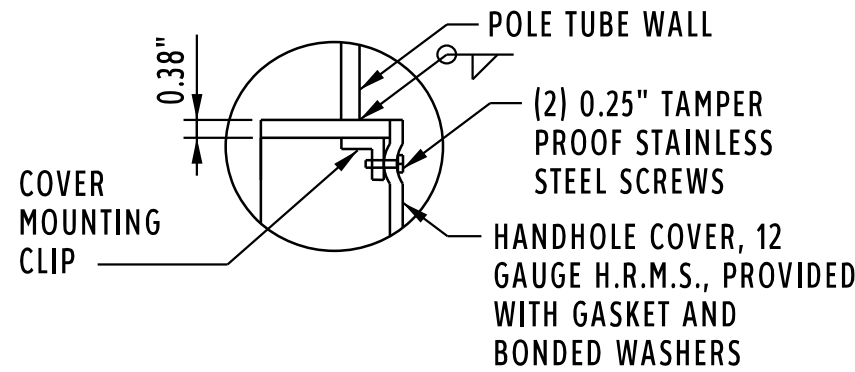
SECTION D-D



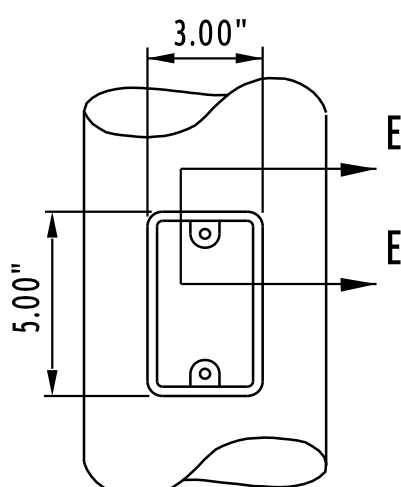
DETAIL 5,
LUMINAIRE ARM ATTACHMENT
FOR TYPE A POLES



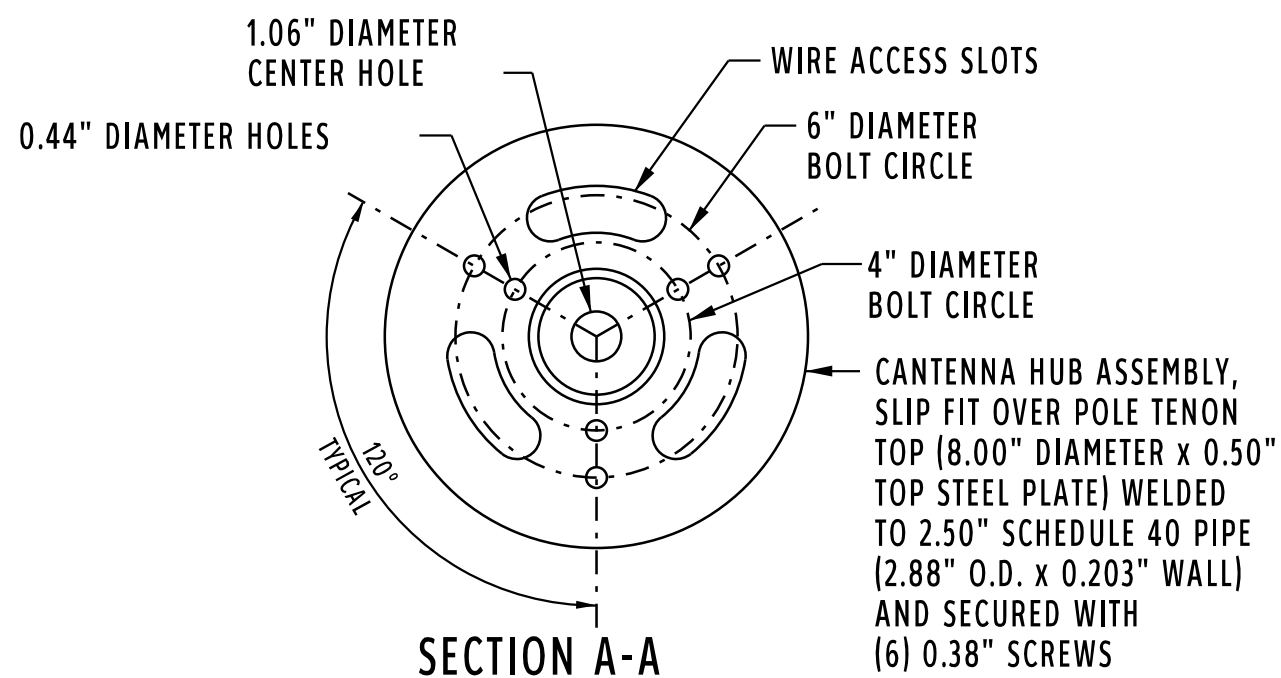
DETAIL 1,
POLE TOP SHROUD FOR
TYPE A AND B POLES



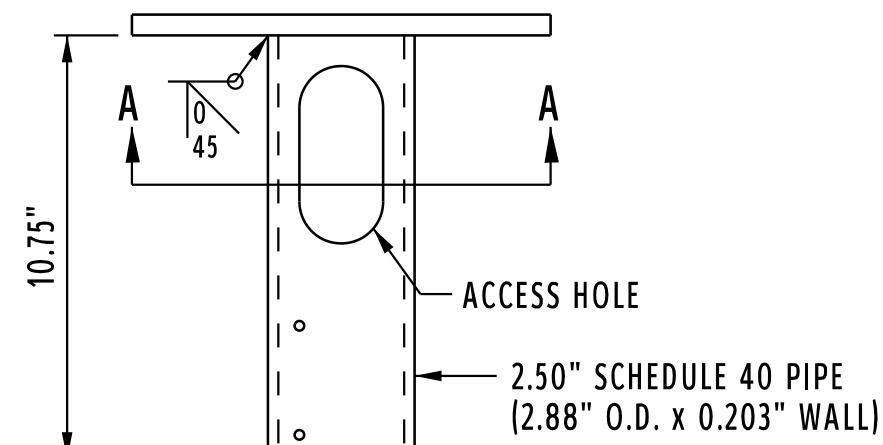
SECTION E-E



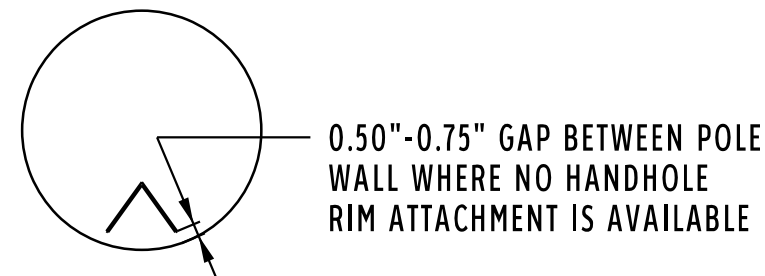
DETAIL 6
3" x 5" HANDHOLE FOR
TYPE A AND B POLES



SECTION A-A

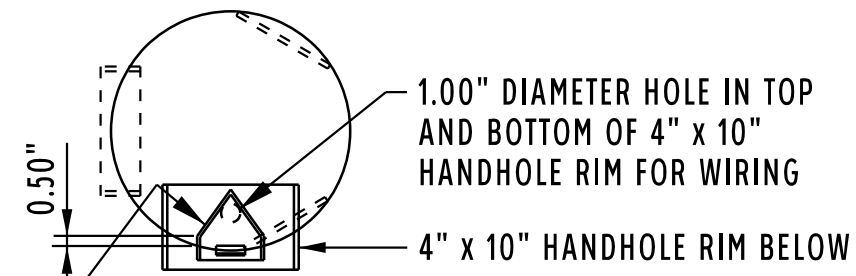


DETAIL 2,
CANTENNA HUB ASSEMBLY
FOR TYPE A AND B POLES

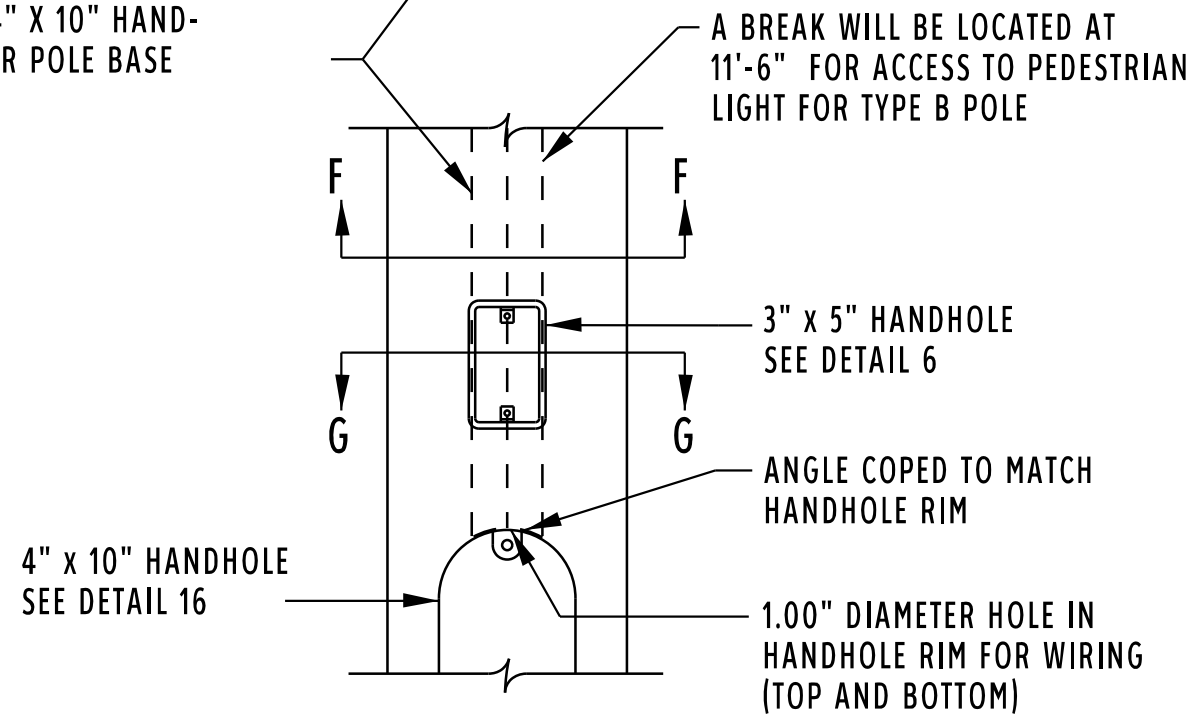


SECTION F-F

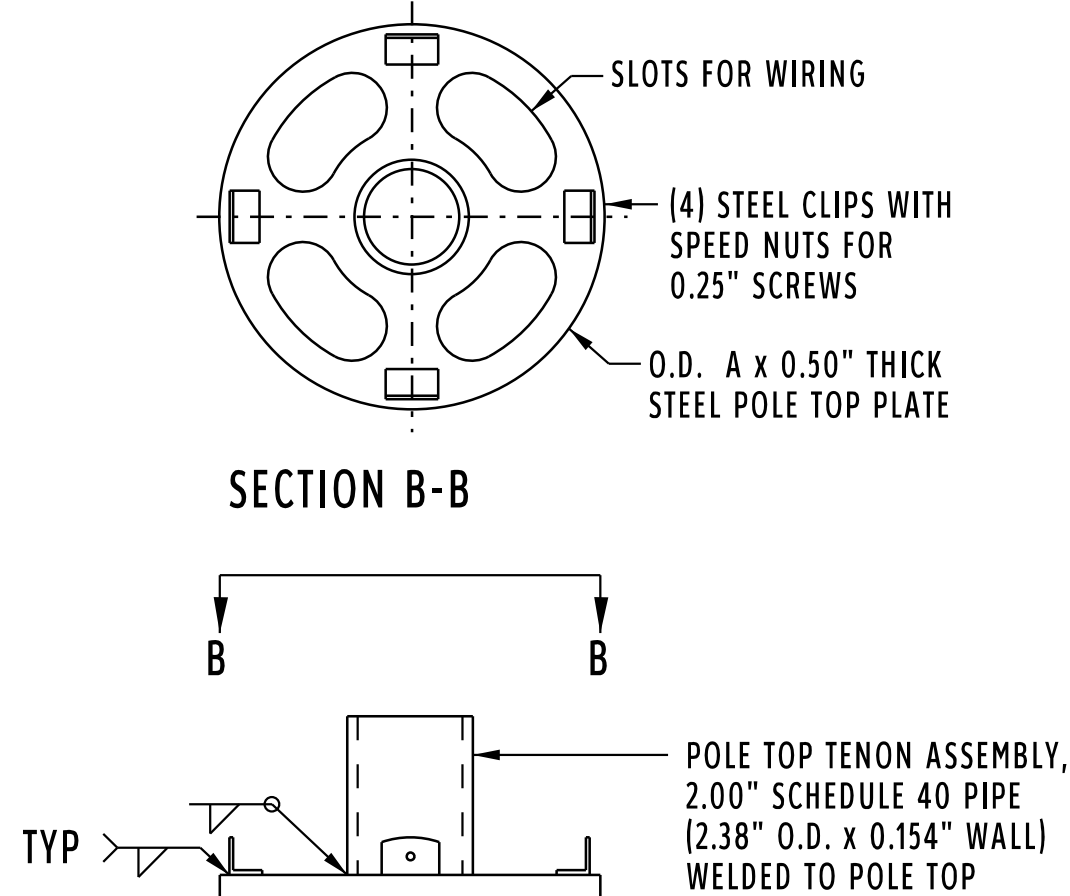
2" x 2" x 3/16" INTERNAL STEEL ANGLE WELDED TO 3" x 5" HANDHOLE RIMS TO RUN FROM 6" BELOW BOTTOM LUMINAIRE ARM ATTACHMENT FOR TYPE A POLE OR 2'-3" FROM TOP OF POLE FOR TYPE B TO TOP OF 4" x 10" HAND-HOLE RIM NEAR POLE BASE



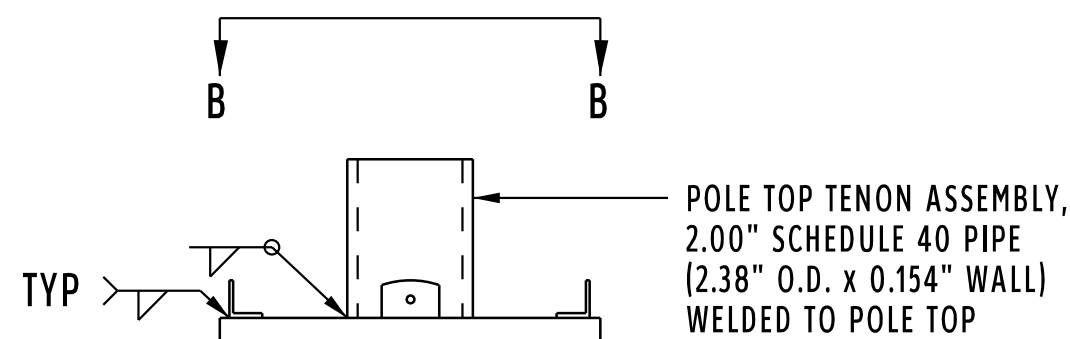
SECTION G-G



DETAIL 7
INTERNAL DIVIDER FOR
TYPE A AND B POLES



SECTION B-B



DETAIL 3,
POLE TOP TENON ASSEMBLY
FOR TYPE A AND B POLES

POLE AND LUMINAIRE ARM DATA																			
POLE TYPE	MOUNTING HEIGHT	LUMINAIRE ARM TYPE	LUMINAIRE ARM				DETAIL 3 O.D. A	POLE TUBE				POLE BASE				ANCHOR BOLT			
			ARM SPAN L	RISE HEIGHT R	PIPE DIAMETER	WALL THICKNESS		BASE DIA.	TOP DIA.	LENGTH T	GAUGE	SQUARE S	BOLT CIRCLE Y	THICK M	SLOT Z	DIA. K	LENGTH J	THREAD LENGTH U	HOOK H
A	30'	SINGLE	6.00'	3.50'	2.38"	0.154"	9.00"	12.00"	8.22"	27.00"	7	17.00"	16.00"	1.25"	1.38" X 1.94"	1.25"	42.00"	6.00"	6.00"
A	30'	TRUSS	12.00'	5.50'	2.38"	0.154"	9.50"	12.00"	8.50"	25.00"	7	17.00"	16.00"	1.25"	1.38" X 1.94"	1.25"	42.00"	6.00"	6.00"
A	35'	SINGLE	6.00'	3.50'	2.38"	0.154"	8.50"	12.00"	7.52"	32.00'	7	17.00"	16.00"	1.25"	1.38" X 1.94"	1.25"	42.00"	6.00"	6.00"
A	35'	TRUSS	12.00'	5.50'	2.38"	0.154"	8.50"	12.00"	7.80"	30.00"	7	17.00"	16.00"	1.25"	1.38" X 1.94"	1.25"	42.00"	6.00"	6.00"
B	33.5'	SINGLE	6.00'	0'	1.90"	0.200"	7.50"	11.00"	6.10"	35.00"	7	16.50"	15.00"	1.50"	1.38" X 2.56"	1.25"	42.00"	6.00"	6.00"

EQUIPMENT DATA		
ITEM	MOUNTING HEIGHT FEET	SIZE
ANTENNA	*	15.00" X 24.00" H
LUMINAIRE ARM	**	NA
RRUS 32	21.10	12.05" W X 27.20" H
RRUS 32	18.19	12.05" W X 27.20" H
LOAD CENTER CABINET	15.83	4.88" W X 9.38" H
CAMERA	14.50	N/A

*Top of Shaft
**6" below Top of Shaft

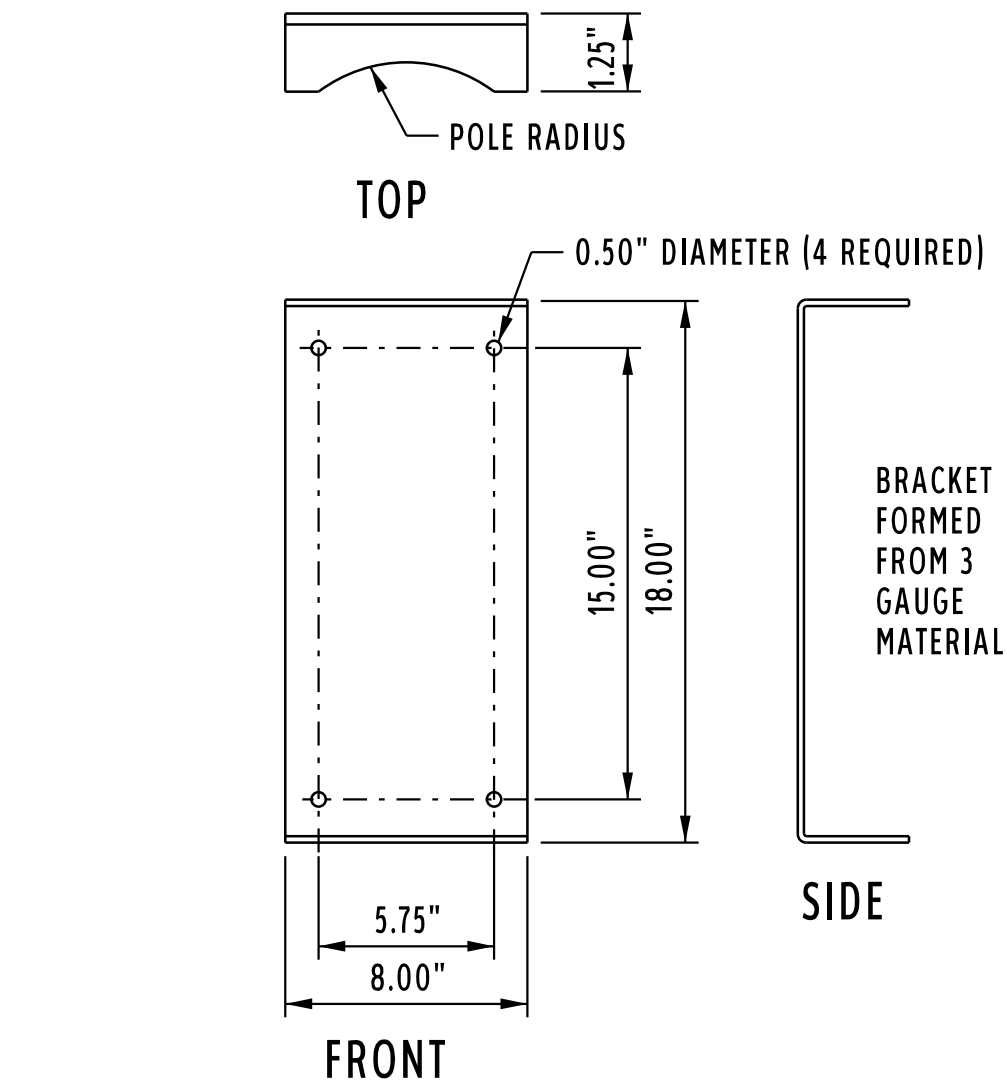
MATERIAL DATA		
COMPONENT	ASTM DESIGNATION	MINIMUM YIELD (KSI)
POLE TUBE	A595 GRADE A OR A572	55
MOUNTING BRACKETS	A36	36
ARM ATTACHMENTS	A27 GRADE 65-35 OR A36	35
POLE BASE	A36	36
ARM CONNECTING BOLTS	SAE GRADE 5	-
ARM PIPE, 2" SCHEDULE 40	A513 OR EQUIVALANT	36
ANCHOR BOLTS	F1554 GRADE 55	55

			BY	SMALL CELL STREET LIGHT POLES				
				2 OF 4				
			REVISIONS	CITY OF KANSAS CITY, KANSAS PUBLIC WORKS DEPARTMENT ENGINEERING DIVISION				
				DESIGNED: —		DRAWN: —		
			DATE	CHECKED: KCK		DATE: 4/11/19		
				SCALE: N/A		SHEET NO.:		

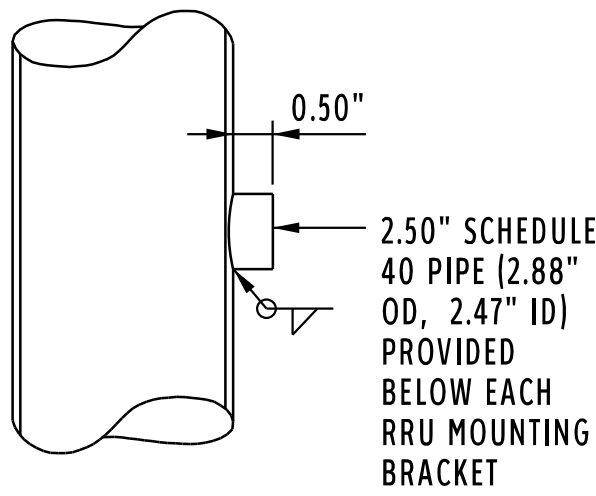


"CLASSIFIED LABEL": UL1598, CATEGORY IEUR (LUMINAIRE POLES). POLES AT LEAST 12' TALL, BUT LESS THAN 100'

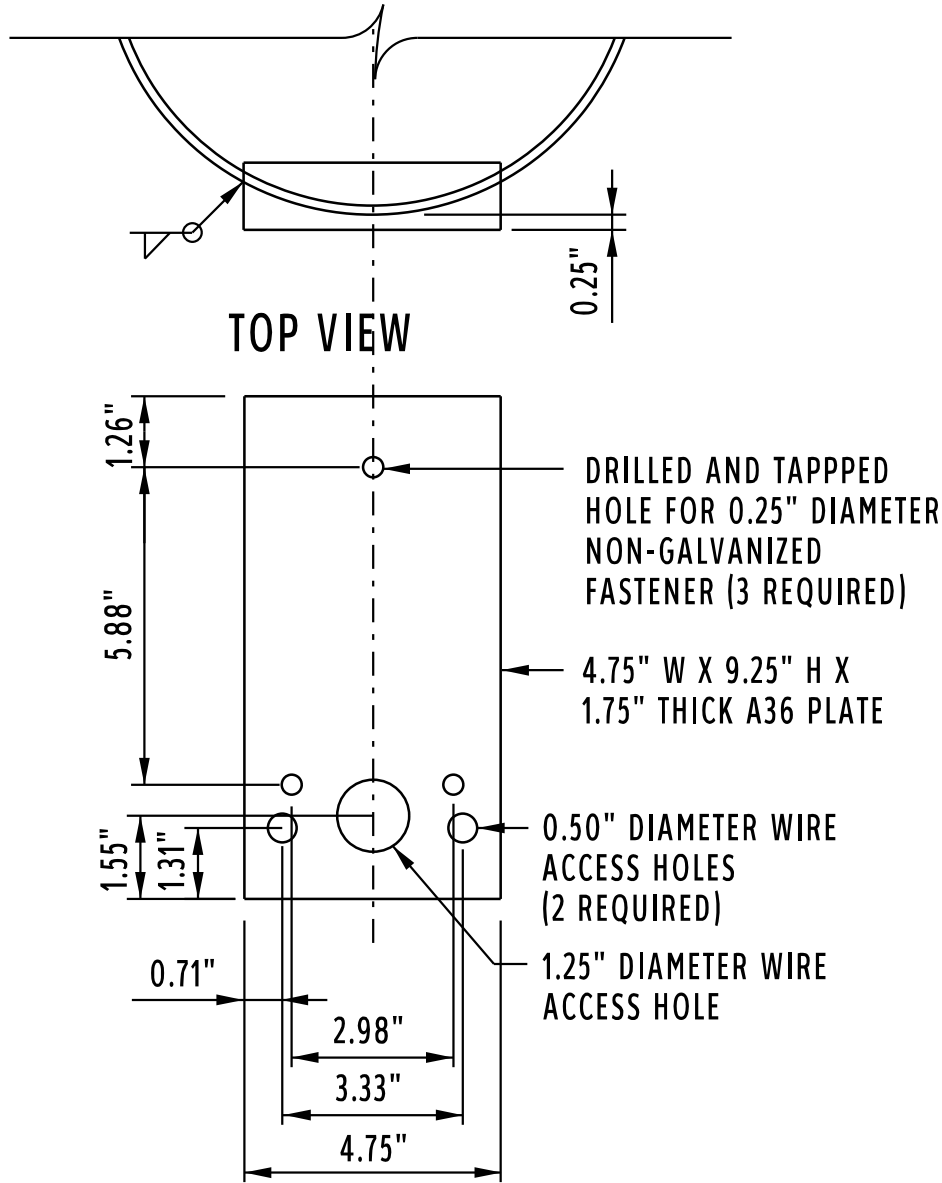
DETAIL 13
UL CLASSIFIED LABEL FOR
TYPE A AND B POLES



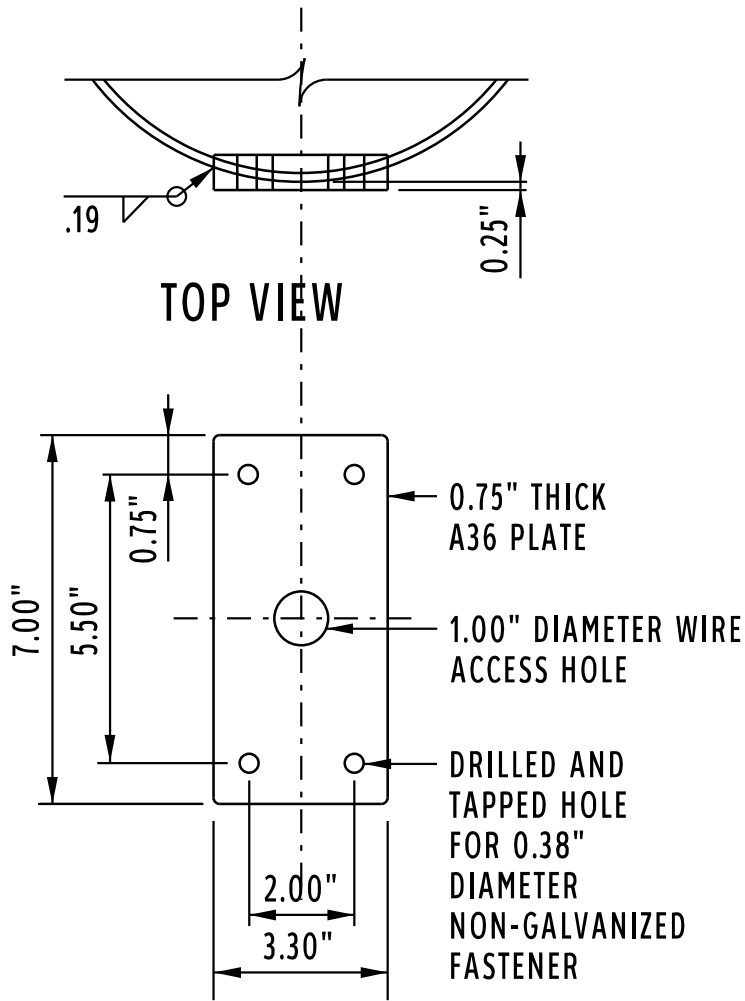
DETAIL 8
RRU MOUNTING BRACKET
FOR TYPE A POLES



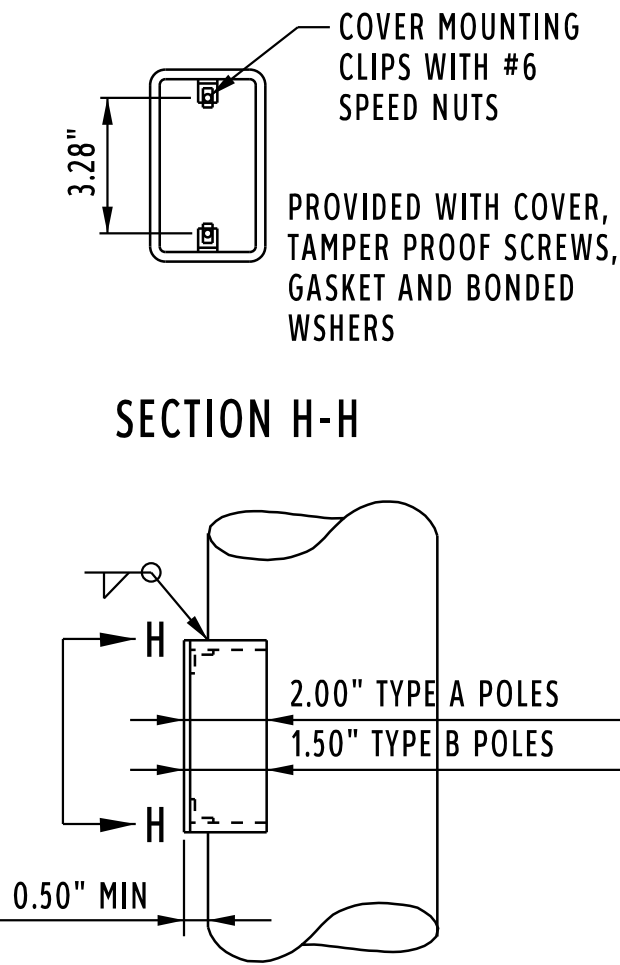
DETAIL 9
2.50" SCHEDULE 40
FOR TYPE A POLES



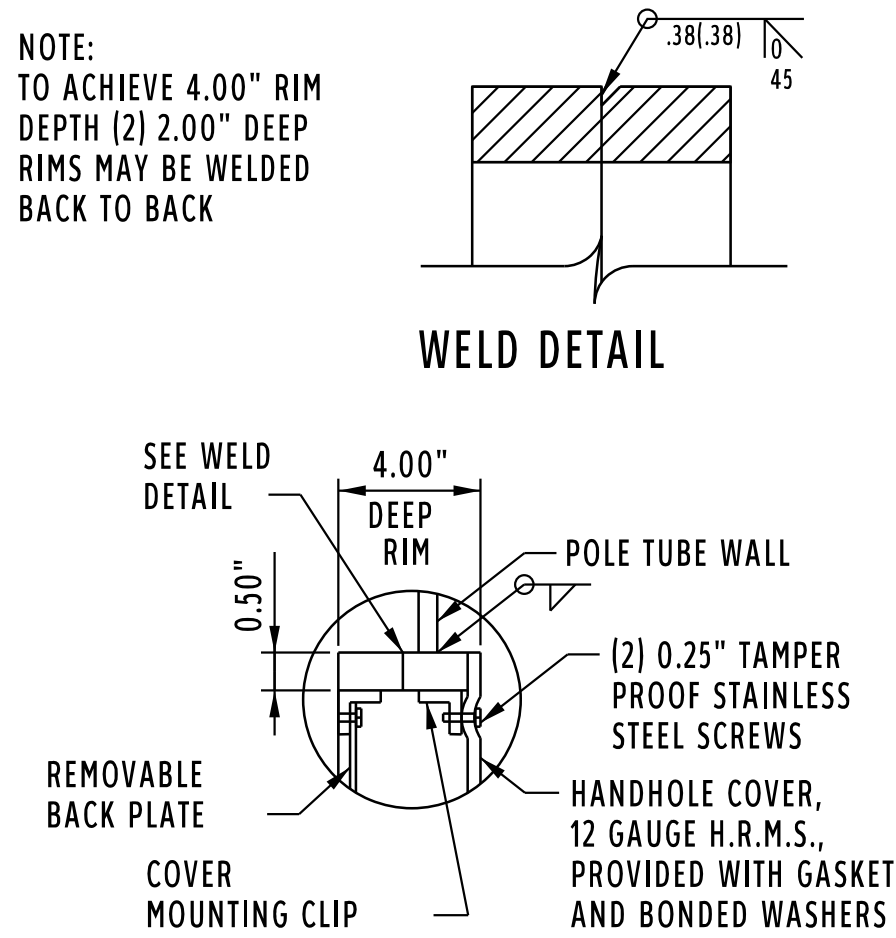
DETAIL 10
OPTIONAL LOAD CENTER MOUNTING
PLATE FOR TYPE A POLES



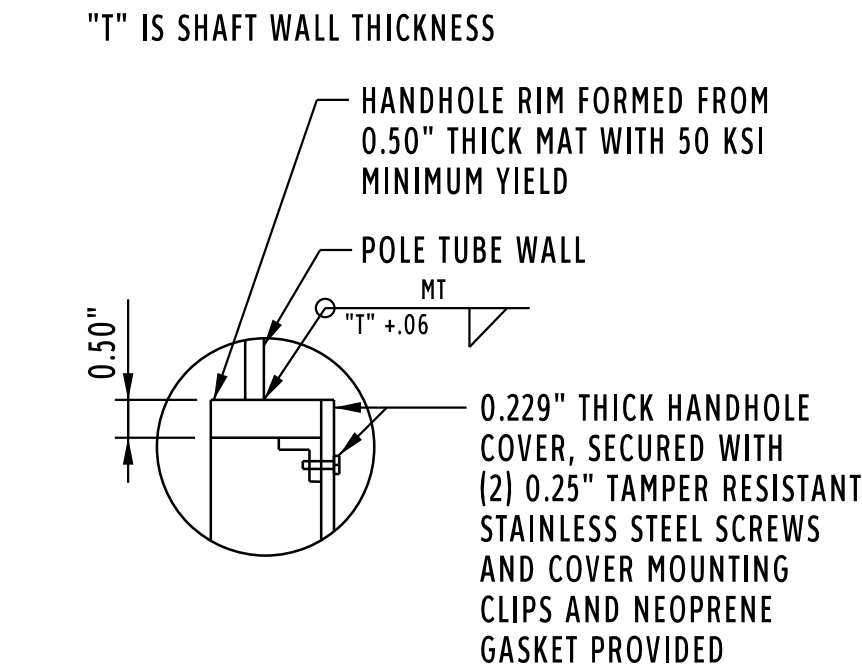
DETAIL 11
CAMERA MOUNTING PLATE
FOR TYPE A AND B POLES



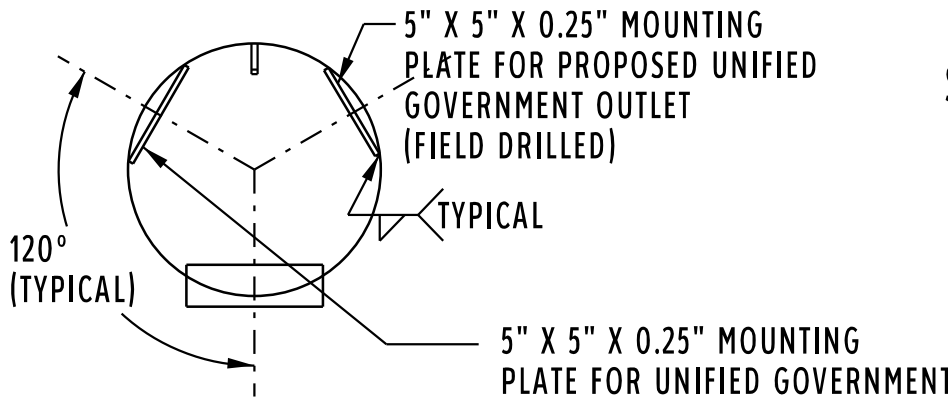
DETAIL 12
FESTOON BOX FOR
TYPE A AND B POLES



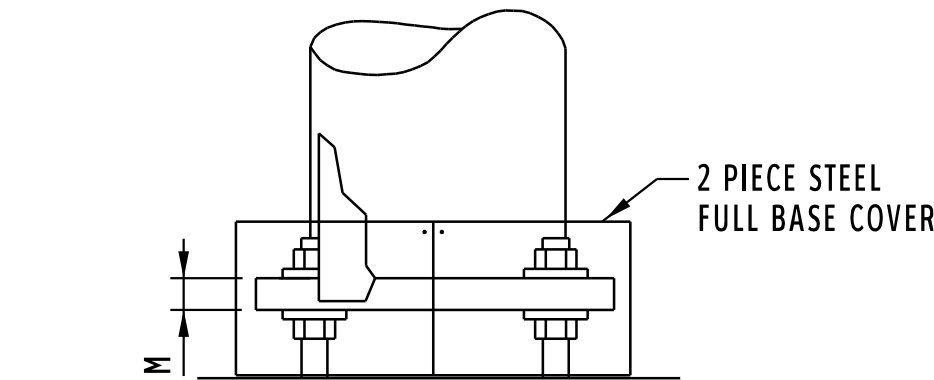
DETAIL 14
4" X 10" HANDHOLE FOR
TYPE A AND B POLES



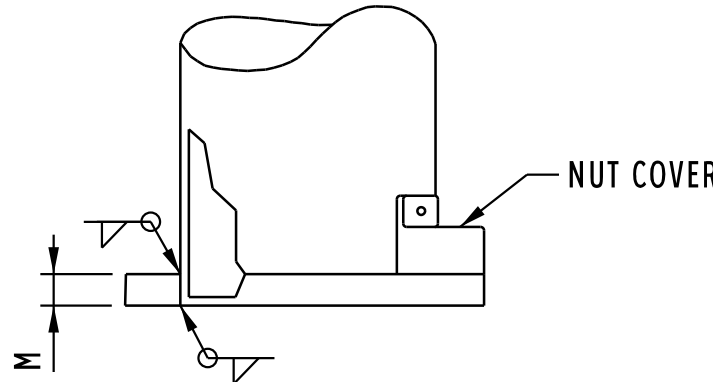
DETAIL 15
4.5" X 24" HANDHOLE FOR
TYPE A AND B POLES



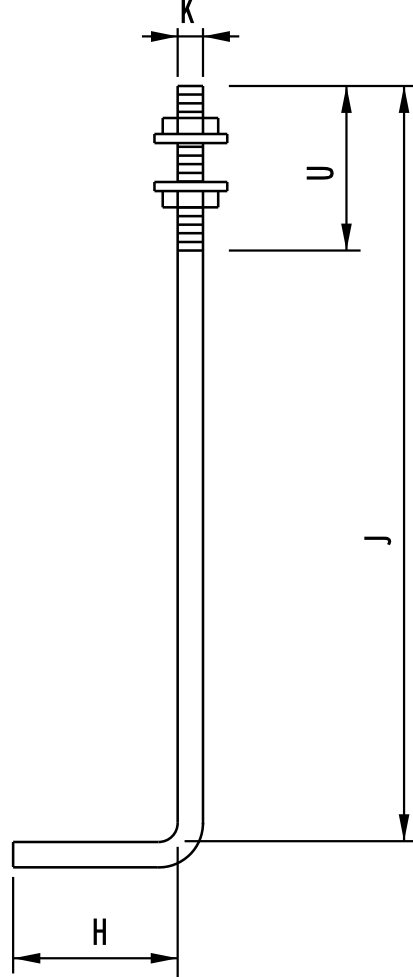
DETAIL 16
INTERIOR MOUNTING PLATES
FOR TYPE A AND B POLES



DETAIL 17
POLE BASE FOR
TYPE A AND B POLES



DETAIL 18
J ANCHOR BOLT FOR
TYPE A AND B POLES



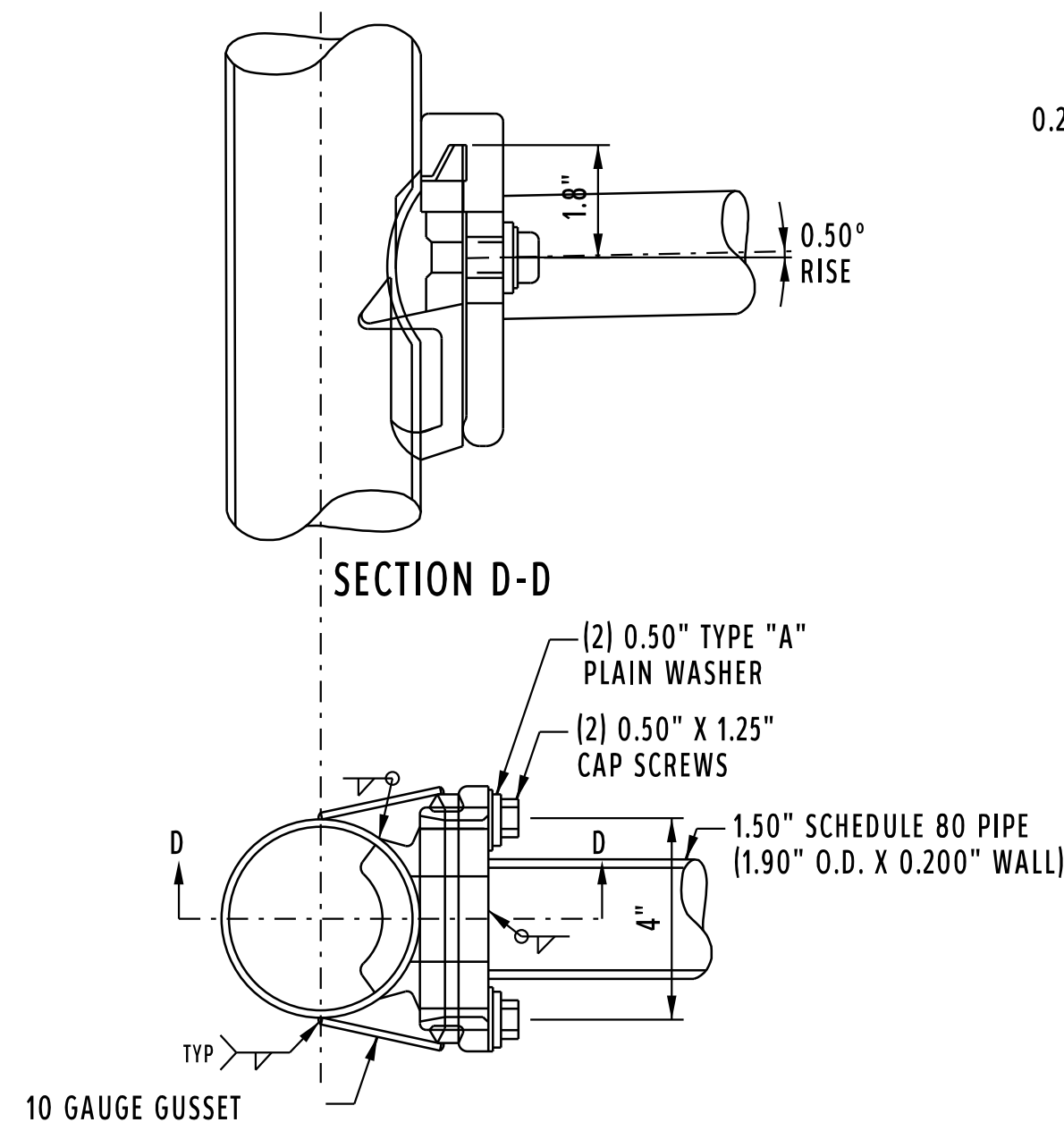
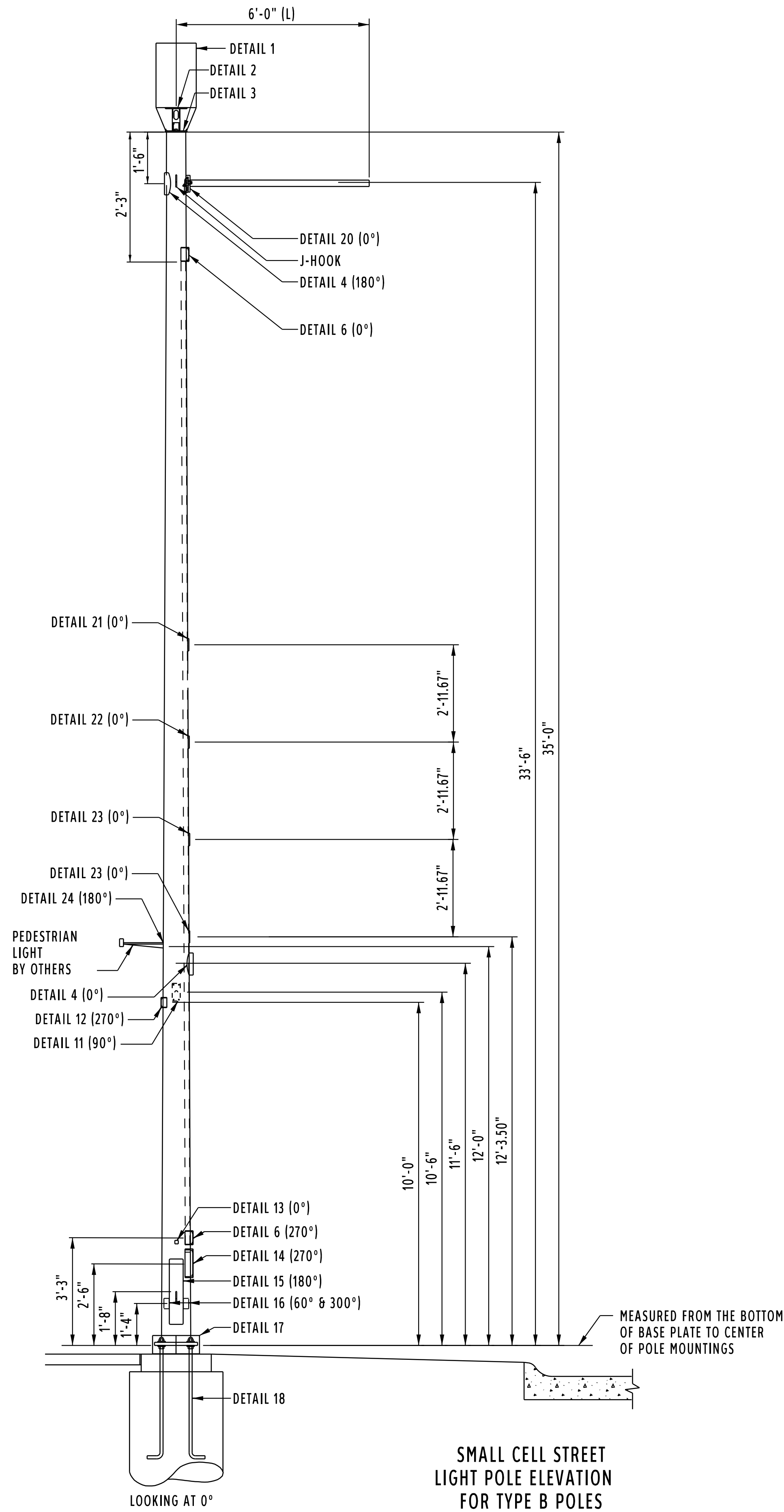
DETAIL 19
PLAN VIEW
POLE BASE FOR
TYPE A AND B POLES

SMALL CELL STREET LIGHT POLES 3 OF 4

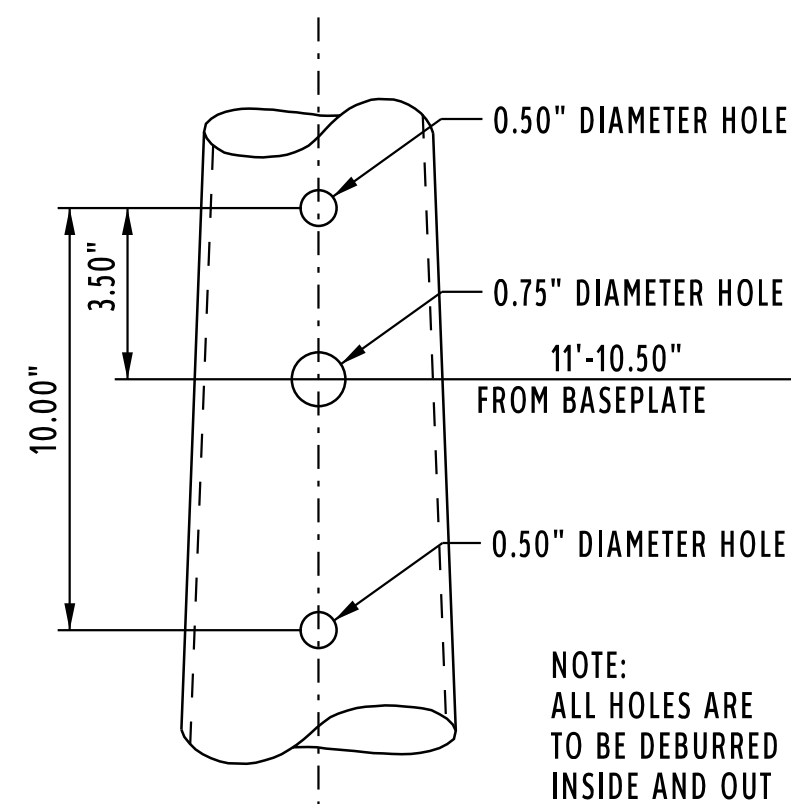
CITY OF KANSAS CITY, KANSAS
PUBLIC WORKS DEPARTMENT
ENGINEERING DIVISION



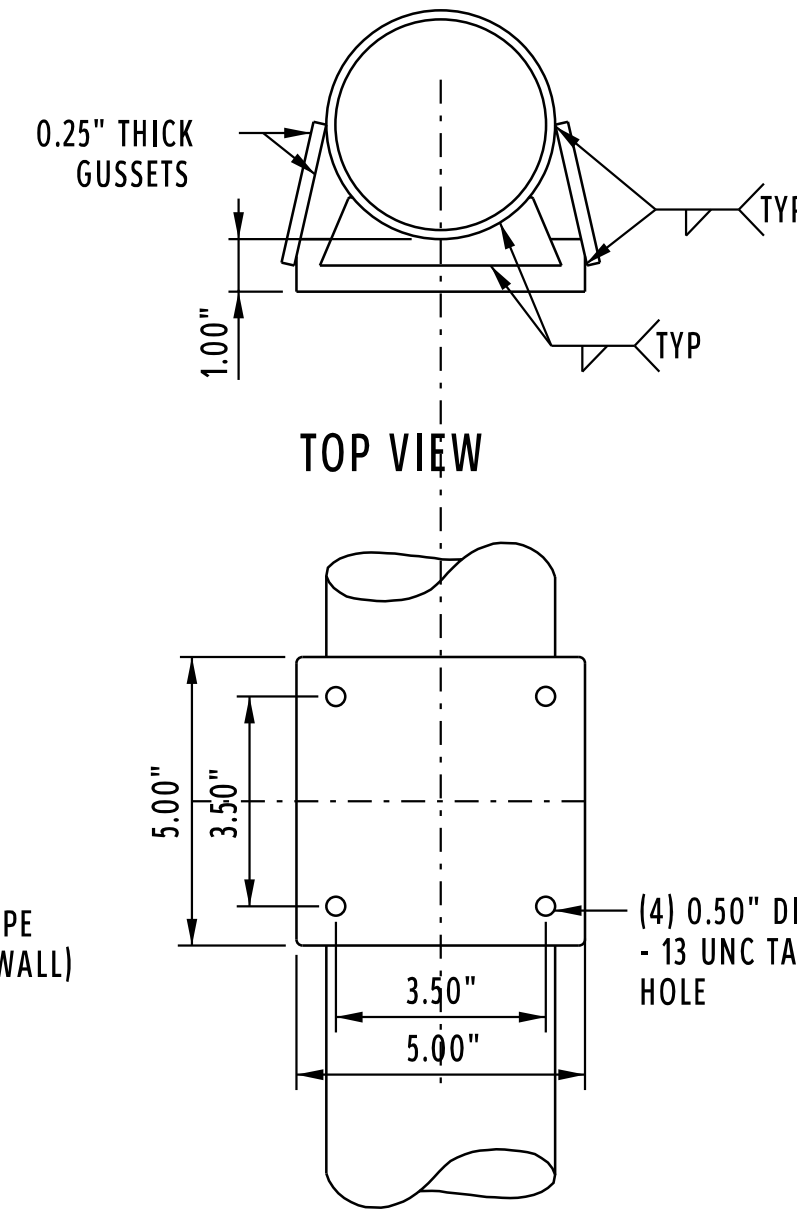
DESIGNED:	—	DRAWN:	—
CHECKED:	KCK	DATE:	4/11/19
SCALE:	N/A	SHEET NO.:	



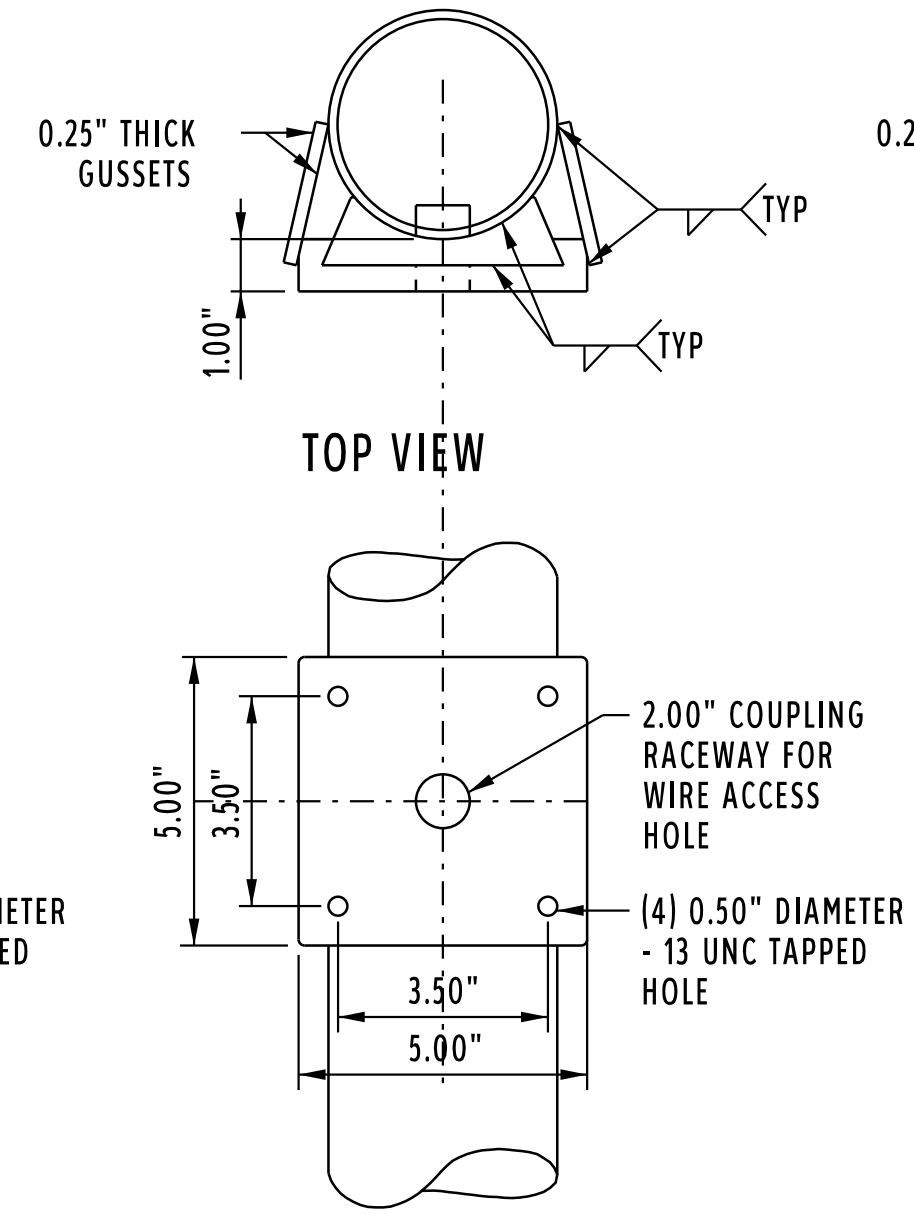
DETAIL 20,
LUMINAIRE ARM ATTACHMENT
FOR TYPE B POLES



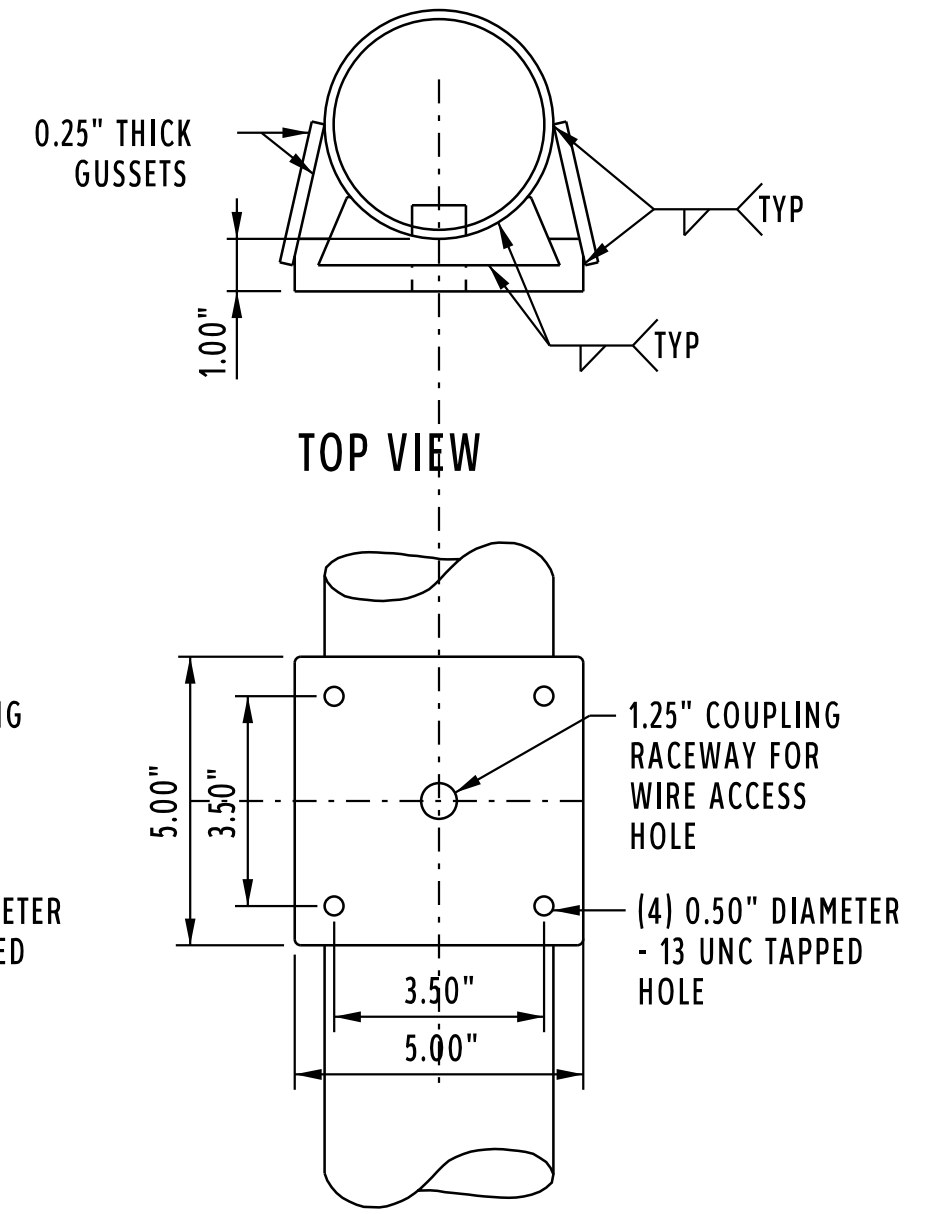
DETAIL 24
LOUIS POULSEN DRILLING
FOR TYPE B POLES



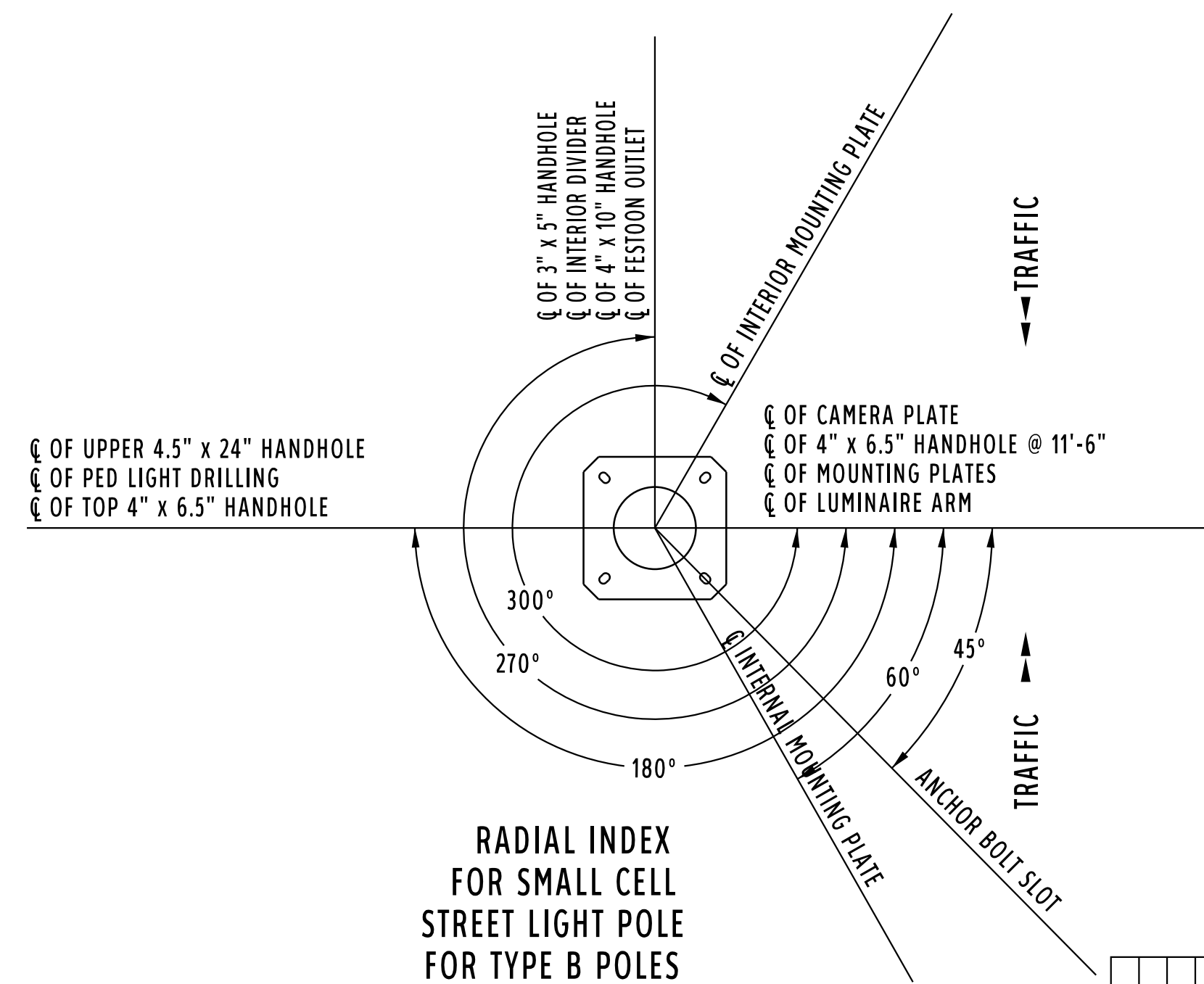
DETAIL 21
SIGN ATTACHMENT
FOR TYPE B POLES



DETAIL 22
SIGN ATTACHMENT
FOR TYPE B POLES



DETAIL 23
SIGN ATTACHMENT
FOR TYPE B POLES



																																																																																																																																																																																																																																																																																																																																																																																																																																																																																																																																																																																																																																																																																																																																																																																																																																																																																																																																																																																																																																																																																																																																																																																																																																																																																																																																																																																																																					</
--	--	--	--	--	--	--	--	--	--	--	--	--	--	--	--	--	--	--	--	--	--	--	--	--	--	--	--	--	--	--	--	--	--	--	--	--	--	--	--	--	--	--	--	--	--	--	--	--	--	--	--	--	--	--	--	--	--	--	--	--	--	--	--	--	--	--	--	--	--	--	--	--	--	--	--	--	--	--	--	--	--	--	--	--	--	--	--	--	--	--	--	--	--	--	--	--	--	--	--	--	--	--	--	--	--	--	--	--	--	--	--	--	--	--	--	--	--	--	--	--	--	--	--	--	--	--	--	--	--	--	--	--	--	--	--	--	--	--	--	--	--	--	--	--	--	--	--	--	--	--	--	--	--	--	--	--	--	--	--	--	--	--	--	--	--	--	--	--	--	--	--	--	--	--	--	--	--	--	--	--	--	--	--	--	--	--	--	--	--	--	--	--	--	--	--	--	--	--	--	--	--	--	--	--	--	--	--	--	--	--	--	--	--	--	--	--	--	--	--	--	--	--	--	--	--	--	--	--	--	--	--	--	--	--	--	--	--	--	--	--	--	--	--	--	--	--	--	--	--	--	--	--	--	--	--	--	--	--	--	--	--	--	--	--	--	--	--	--	--	--	--	--	--	--	--	--	--	--	--	--	--	--	--	--	--	--	--	--	--	--	--	--	--	--	--	--	--	--	--	--	--	--	--	--	--	--	--	--	--	--	--	--	--	--	--	--	--	--	--	--	--	--	--	--	--	--	--	--	--	--	--	--	--	--	--	--	--	--	--	--	--	--	--	--	--	--	--	--	--	--	--	--	--	--	--	--	--	--	--	--	--	--	--	--	--	--	--	--	--	--	--	--	--	--	--	--	--	--	--	--	--	--	--	--	--	--	--	--	--	--	--	--	--	--	--	--	--	--	--	--	--	--	--	--	--	--	--	--	--	--	--	--	--	--	--	--	--	--	--	--	--	--	--	--	--	--	--	--	--	--	--	--	--	--	--	--	--	--	--	--	--	--	--	--	--	--	--	--	--	--	--	--	--	--	--	--	--	--	--	--	--	--	--	--	--	--	--	--	--	--	--	--	--	--	--	--	--	--	--	--	--	--	--	--	--	--	--	--	--	--	--	--	--	--	--	--	--	--	--	--	--	--	--	--	--	--	--	--	--	--	--	--	--	--	--	--	--	--	--	--	--	--	--	--	--	--	--	--	--	--	--	--	--	--	--	--	--	--	--	--	--	--	--	--	--	--	--	--	--	--	--	--	--	--	--	--	--	--	--	--	--	--	--	--	--	--	--	--	--	--	--	--	--	--	--	--	--	--	--	--	--	--	--	--	--	--	--	--	--	--	--	--	--	--	--	--	--	--	--	--	--	--	--	--	--	--	--	--	--	--	--	--	--	--	--	--	--	--	--	--	--	--	--	--	--	--	--	--	--	--	--	--	--	--	--	--	--	--	--	--	--	--	--	--	--	--	--	--	--	--	--	--	--	--	--	--	--	--	--	--	--	--	--	--	--	--	--	--	--	--	--	--	--	--	--	--	--	--	--	--	--	--	--	--	--	--	--	--	--	--	--	--	--	--	--	--	--	--	--	--	--	--	--	--	--	--	--	--	--	--	--	--	--	--	--	--	--	--	--	--	--	--	--	--	--	--	--	--	--	--	--	--	--	--	--	--	--	--	--	--	--	--	--	--	--	--	--	--	--	--	--	--	--	--	--	--	--	--	--	--	--	--	--	--	--	--	--	--	--	--	--	--	--	--	--	--	--	--	--	--	--	--	--	--	--	--	--	--	--	--	--	--	--	--	--	--	--	--	--	--	--	--	--	--	--	--	--	--	--	--	--	--	--	--	--	--	--	--	--	--	--	--	--	--	--	--	--	--	--	--	--	--	--	--	--	--	--	--	--	--	--	--	--	--	--	--	--	--	--	--	--	--	--	--	--	--	--	--	--	--	--	--	--	--	--	--	--	--	--	--	--	--	--	--	--	--	--	--	--	--	--	--	--	--	--	--	--	--	--	--	--	--	--	--	--	--	--	--	--	--	--	--	--	--	--	--	--	--	--	--	--	--	--	--	--	--	--	--	--	--	--	--	--	--	--	--	--	--	--	--	--	--	--	--	--	--	--	--	--	--	--	--	--	--	--	--	--	--	--	--	--	--	--	--	--	--	--	--	--	--	--	--	--	--	--	--	--	--	--	--	--	--	--	--	--	--	--	--	--	--	--	--	--	--	--	--	--	--	--	--	--	--	--	--	--	--	--	--	--	--	--	--	--	--	--	--	--	--	--	--	--	--	--	--	--	--	--	--	--	--	--	--	--	--	--	--	--	--	--	--	--	--	--	--	--	--	--	--	--	--	--	--	--	--	--	--	--	--	--	--	--	--	--	--	--	--	--	--	--	--	--	--	--	--	--	--	--	--	--	--	--	--	--	--	--	--	--	--	--	--	--	--	--	--	--	--	--	--	--	--	--	--	--	--	--	--	--	--	--	--	--	--	--	--	--	--	--	--	--	--	--	--	--	--	--	--	--	--	--	--	--	--	--	--	--	--	--	--	--	--	--	--	--	--	--	--	--	--	--	--	--	--	--	--	--	--	--	--	--	--	--	--	--	--	--	--	--	--	--	--	--	--	--	--	--	--	--	--	--	--	--	--	--	--	--	--	--	--	--	--	--	--	--	--	--	--	--	--	--	--	--	--	--	--	--	--	--	--	--	--	--	--	--	--	--	--	--	--	--	--	--	--	--	--	--	--	--	--	--	--	--	--	--	--	--	--	--	--	--	--	--	--	--	--	--	--	--	--	--	--	--	--	--	--	--	--	--	--	--	--	--	--	--	--	--	--	--	--	--	--	--	--	--	--	--	--	--	--	--	--	--	--	--	--	--	--	--	--	--	--	--	--	--	--	--	--	--	--	--	--	--	--	--	--	--	--	--	--	--	--	--	--	--	--	--	--	--	--	--	--	--	--	--	--	--	--	--	--	--	--	--	--	--	--	--	--	--	--	--	--	--	--	--	--	--	--	--	--	--	--	--	--	--	--	--	--	--	--	--	--	--	--	--	--	--	--	--	--	--	--	--	--	--	--	----