

Road to Recovery

**BRAINSTORMING:
MEASURES OF SUCCESS**

March 10, 2022



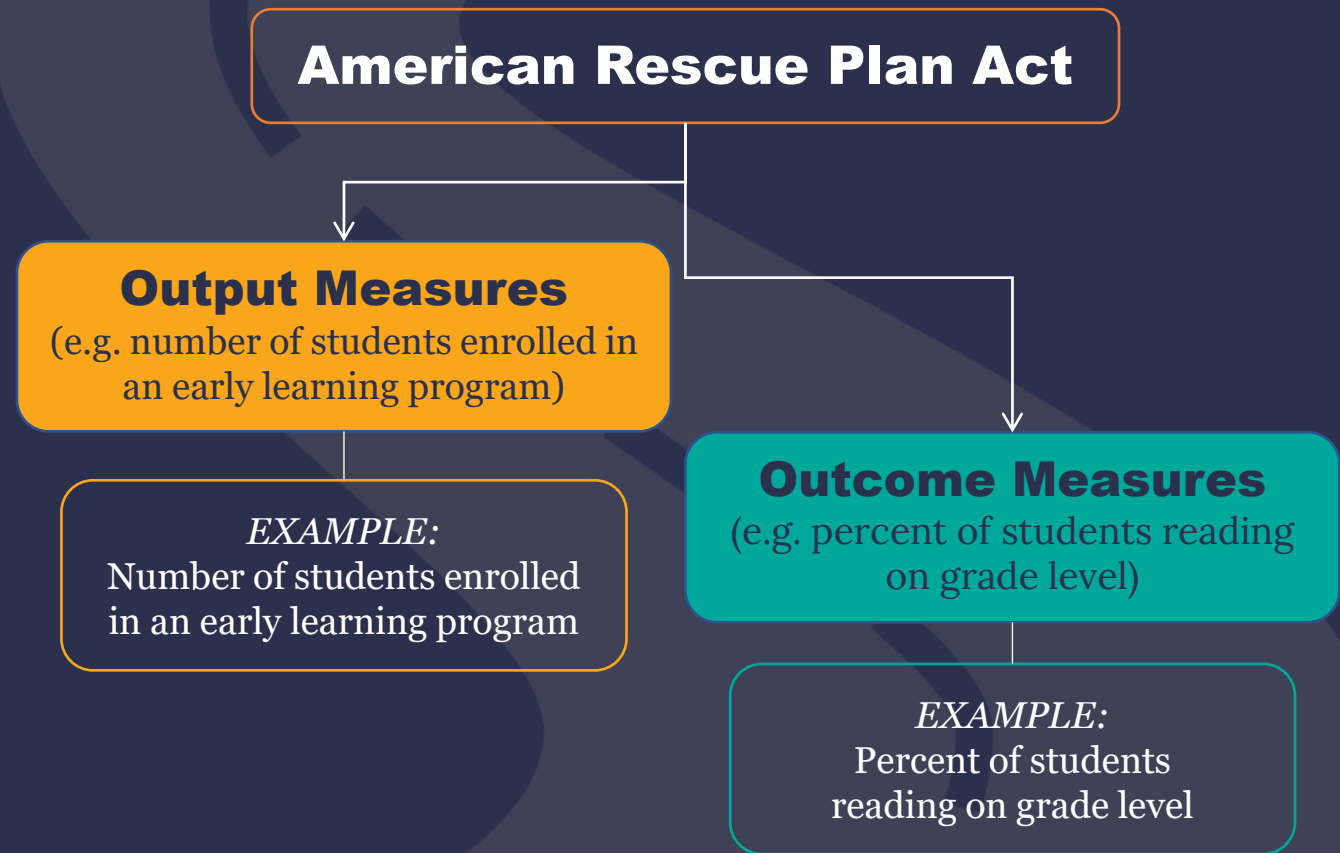
Measures of Success



Measures of Success

HOW WILL WE ASSESS IMPACT?

- Means of evaluating impact of programs and projects funded by the ARPA funds



ARPA Quarterly Reporting

(OUTPUT) PERFORMANCE MEASURES

Public Health	Negative Economic & Disproportionately Impacted Communities	Public Sector Capacity / Premium Pay
Total expenditure	Total allocated toward evidence-based interventions	Number of government FTEs responding to COVID-19 supported
Number of Small Businesses Served	Number of households served	Number of government FTEs rehired
Number of Non-Profits Served	Number of small businesses served	
	Number of non-profits served	

Executive Order

ON ADVANCING RACIAL EQUITY AND SUPPORT FOR UNDERSERVED COMMUNITIES THROUGH THE FEDERAL GOVERNMENT (JANUARY 20, 2021)

The term “**equity**” means the consistent and systematic fair, just, and impartial treatment of all individuals, including individuals who belong to underserved communities that have been denied such treatment, such as:

- Black, Latino, and Indigenous and Native American persons, Asian Americans and Pacific Islanders and other persons of color;
- Members of religious minorities;
- Lesbian, gay, bisexual, transgender, and queer (LGBTQ+) persons;
- Persons with disabilities;
- Persons who live in rural areas; and
- Persons otherwise adversely affected by persistent poverty or inequality.

The term “**underserved communities**” refers to populations sharing a particular characteristic, as well as geographic communities, that have been systematically denied a full opportunity to participate in aspects of economic, social, and civic life, as exemplified by the list in the preceding definition of “equity.”

Promoting Equitable Outcomes



GOALS

Are there particular historically underserved, marginalized, or adversely affected groups that you intend to serve within your jurisdiction?



AWARENESS

How equal and practical is the ability for residents or businesses to become aware of the services funded by the SLFRF?



ACCESS & DISTRIBUTION

Are there differences in levels of access to benefits and services across groups? Are there administrative requirements that result in disparities in ability to complete applications or meet eligibility criteria?



OUTCOMES

Are intended outcomes focused on closing gaps, reaching universal levels of service, or disaggregating progress by race, ethnicity, and other equity dimensions where relevant for the policy objective?

Goals

FOR OUR PANDEMIC RECOVERY

VALUES FOR OUR RECOVERY

Equitable, Collaborative, Innovative & Resilient



**COMMUNITY HEALTH
AND WELL-BEING**



**INFRASTRUCTURE AND
BUILT ENVIRONMENT**



**ORGANIZATIONAL AND
COMMUNITY RESILIENCE**

Goals

FOR OUR PANDEMIC RECOVERY



COMMUNITY HEALTH
AND WELL-BEING

VALUES FOR OUR RECOVERY
Equitable, Collaborative, Innovative & Resilient

**Community Health Improvement
Plan Outcomes**

Area Plans

**Community Development 5-Year
Consolidated Plan
(in-process)**

POSSIBLE MEASURES

- Median Household Income
[US Census Bureau](#)
 - Number of full-day, full-year
childcare spaces
[WYEDC measures](#)
- Percent of residents with health
insurance
[US Census Bureau ACS 5-year
estimate](#)
- Percent of households that spend 30%
or more of household income on rent
or mortgage
[US Census Bureau ACS 5-year
estimate](#)
- Rate of reported violent crime
[KBI Crime Index](#)

Goals

FOR OUR PANDEMIC RECOVERY



INFRASTRUCTURE AND BUILT ENVIRONMENT

VALUES FOR OUR RECOVERY
Equitable, Collaborative, Innovative & Resilient

Capital Maintenance and Improvement Plan Prioritization

Infrastructure Committee Outcome Definition

goDotte Mobility Strategy (in-process)

Area Plans

POSSIBLE MEASURES

- Increase the 2018 average pavement condition index rating (PCI) of 56 to an average of 65 for the entire road network by 2045.
- Increase the sufficiency index rating by 2040.
- Modernize the streetlight system to provide adequate lighting while reducing energy consumption throughout KCK by 2030.
- Increase average condition rating for existing sidewalks to an acceptable level by 2030.
- Increase community interest and participation by tailoring recreation and programs to the surrounding community’s needs.
- Create an ownership culture and introduce long-term cost savings by establishing a building and logistics internal services fund.
- Increase the quality, usefulness, and sustainability of Unified Government facilities and parks.

CMIP Project Criteria

CAPITAL MAINTENANCE AND IMPROVEMENT PLAN

Long-Term Forecasts

Long-term forecasts should be prepared to better understand resources available for capital spending and to assess operational impacts and eventual maintenance replacement costs.

Revenue Generation/ Eco. Devo. Advantages

Projects should be given priority that demonstrate the potential to have a positive return on investment, either through expected increases in assessed valuation or other economic values that could generate future additional revenues.

Impact on Other Projects

Projects should not be considered in isolation. One project's impact on others should be recognized and costs shared between projects where appropriate. Project coordination will be properly sequenced both internally and alongside external stakeholders operating in Wyandotte County/Kansas City, Ks.

Allow for Funding of Preliminary Activities

For some projects it may be wise to fund only preliminary engineering and planning before

committing to funding the whole project. However, even these expenditures can be considerable. Therefore, these preliminary engineering/planning should also be evaluated, analyzed and prioritized appropriately.

Full Lifecycle Costing

Cost analysis of a proposed project should encompass the entire life of the asset, from planning and acquisition to disposal.

Predictable Timing & Scope

Schedule and scope estimates should be practical and achievable within the requested resources, including financial and human.

Population Served

An estimate of the population that would directly benefit from a project should be considered in the prioritization of project selection.

Capacity Needs

Using volumetric data, traffic counts, or daily visitors to value the current and future needs of systems to prioritize projects that improve the overall function of network assets.

Community Sites

The social impact of projects near community locations should be considered in project selection.

Commerce

Projects that enhance the economic viability of future and existing commercial corridors should be considered during project selection.

Master Plans

UG master plans for zoning, transportation, trails, parks, bus routes and bike lanes should be considered in project selection.

Safety

The safety of the public interacting with UG infrastructure should be considered in project selection.

Infrastructure Condition

A combination of condition ratings, consequence of failure analysis, and likelihood of failure estimates should be considered in project selection.

CMIP Project Criteria

CAPITAL MAINTENANCE AND IMPROVEMENT PLAN

- Weights are set by the Planning & Zoning and UG Board of Commissioners and are reassessed every two years.

These weights are currently being updated based on recent feedback from the Unified Government Public Works & Safety Standing Committee.

Current Weights for CMIP Project Scoring

Capital Criteria	Weight %
Costs: Future O&M	14
ROI (Return-on-Investment)	13
Infrastructure Condition*	12
Population Served*	10
Safety*	9
Community Sites*	8
Capacity Needs*	8
Master Plans*	8
Coordination: Internal/External Stakeholders	6
Commerce*	6
Predictable Project Timing and Scope	6

Goals

FOR OUR PANDEMIC RECOVERY



**ORGANIZATIONAL AND
COMMUNITY RESILIENCE**

VALUES FOR OUR RECOVERY

Equitable, Collaborative, Innovative & Resilient

Commission Priorities

Long-Term Financial Forecast

POSSIBLE MEASURES

- Employee Recruitment, Hiring and Retention
- Employee Development and Training
- Fiscal sustainability and resiliency
 - Reserves (LTFF)
- Community survey?
- Partnerships to deliver services (LTFF)

Define success.

**BRAINSTORM (ADDITIONAL) MEASURES
FOR OUR RECOVERY**

VALUES FOR OUR RECOVERY

Equitable, Collaborative, Innovative & Resilient



**COMMUNITY HEALTH
AND WELL-BEING**



**INFRASTRUCTURE AND
BUILT ENVIRONMENT**



**ORGANIZATIONAL AND
COMMUNITY RESILIENCE**

Prioritization / Weighting



Framework for Recovery Fund Investment

Unless government is operating at full strength, it cannot lead recovery strategies.

Unless the virus is suppressed, the economy cannot recover.

National Association of Counties, [County Frameworks for Recovery Fund Investment](#), February 9, 2022.

	Rescue	Recovery
Vibrant, Connected Communities	Ensure every neighborhood, especially those struggling against poverty and structural racism, gets the necessary emergency relief to access stable housing and basic infrastructure and necessities.	Create long-term community vibrancy by dealing with housing affordability, closing the digital divide, and creating new community wealth strategies.
Job Creation and Quality Business Growth	Deliver liquidity to still-vulnerable small businesses to avert widespread job loss, especially microbusinesses operating in underserved communities.	Help entrepreneurs and small businesses access the capital and knowledge needed to innovate, create jobs, and build wealth locally.
Job Preparation and Wage Gains	Stabilize unemployed and underemployed workers through economic assistance and rewarding essential workers who have sacrificed their own health on the frontlines.	Invest in the productive potential of an increasingly diverse talent base and connect workers to quality career pathways.

KEY MEASURES

Seattle & King County

- Monitor several indicators of economic, social, and overall health impacts.
- Include measures related to economic stability, housing, food insecurity, education, health care, behavioral health, and overall health.

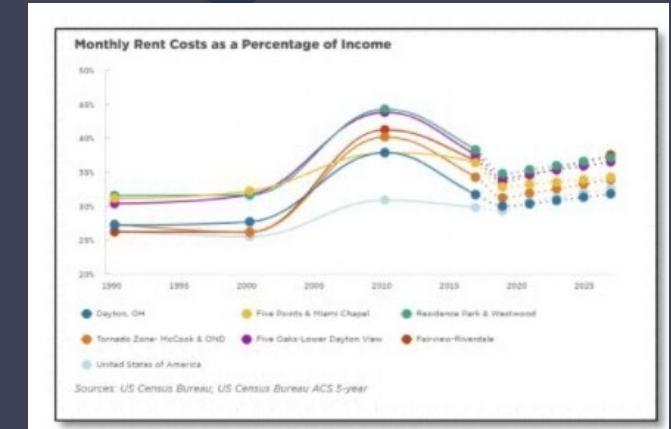
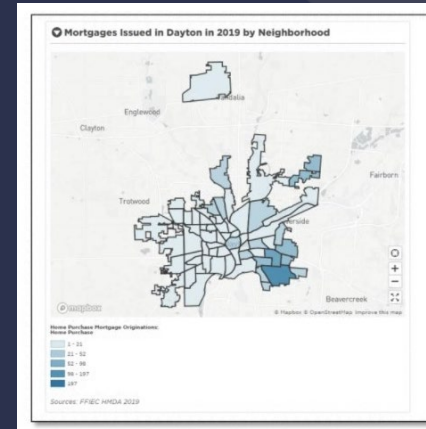
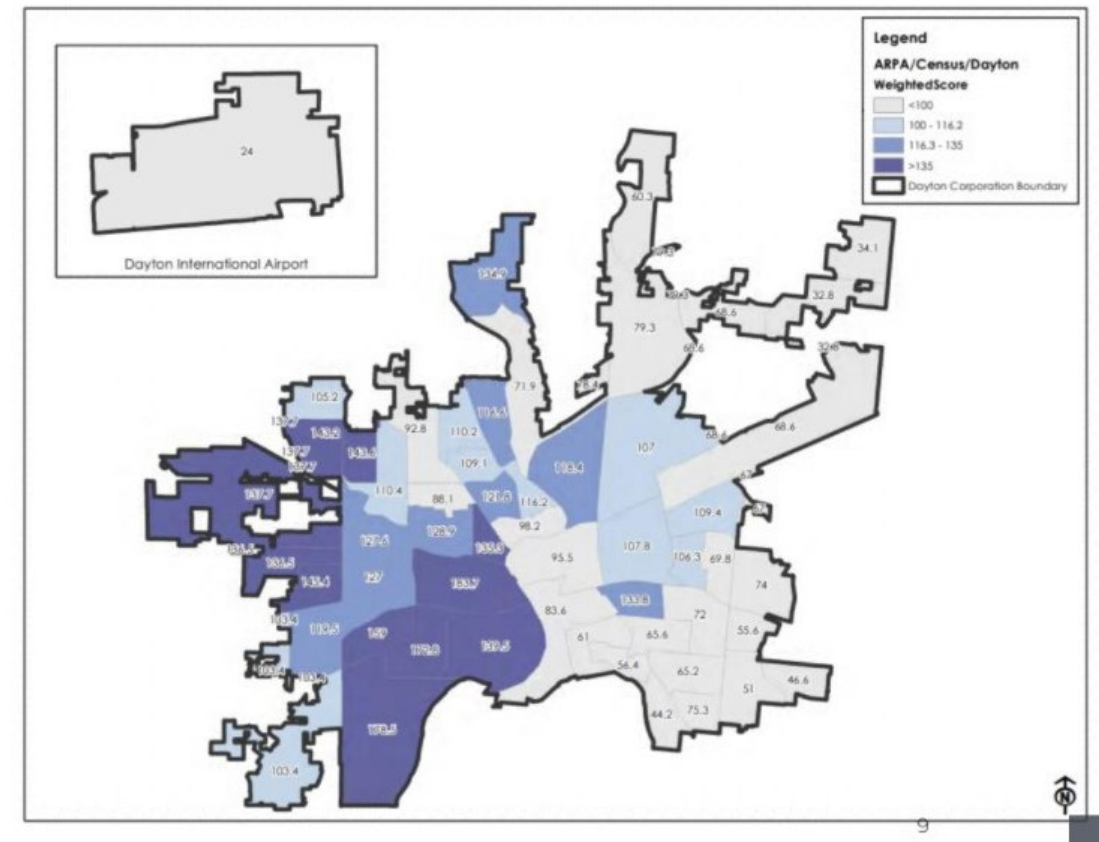
Economic	Social	Health
Unemployment 70,200+ King County residents received unemployment benefits the week of July 18 - July 24, 2021	Food Insecurity ↑ 16,100 more King County households received Basic Food assistance in June 2021 than January 2020, a 16% increase	Deaths ↑ 6% increase in non-COVID deaths among working-age King County residents (ages 16-64) during March - December 2020 compared to 2017-2019
Economic Stability 25% of King County CORONA survey respondents reported COVID-19 impacted meeting financial obligations or essential needs	Food Insecurity 5% of adults in King, Pierce, and Snohomish Counties did not have enough food to eat between March 17 - March 29, 2021	Healthcare ↑ 62,300 more King County residents were enrolled in Medicaid in June 2021 than in January 2020
Traffic ↓ -14% decrease in local highway traffic volume on June 27, 2021 compared to the same day in 2019	Family Violence ↑ 13% increase in calls from King County residents to the National Domestic Violence Hotline in July 2021 compared to January 2020	Behavioral Health ↑ 32% increase in calls to behavioral health crisis line in June 2021 compared to 2019
Housing 48% of calls to 2-1-1 hotline requested housing-related assistance from January 4-January 10, 2021	Education 18% of King County adults with children in grades K-12 did not always have internet available for educational purposes in December 2020	Toxic Exposures ↓ -5% decrease in calls to WA Poison Center from King County residents in January-July 2021 compared to 2019

Dayton, OH

Description of Measure	Determinant Type	Data Source	Release Year
Proportion of Individuals in HUD Assisted Housing	Housing	HUD Picture of Subsidized Household	2020
Housing Vacancy Rate	Housing	American Community Survey	2015-2019
Proportion of Families Living in Poverty	Economic	American Community Survey	2015-2019
Median Gross Rent as a Proportion of Monthly Income	Economic	American Community Survey	2015-2019
Proportion of Adults in Poor Physical Health	Health	Center for Disease Control	2020
Proportion of Adults with Poor Mental Health	Health	Center for Disease Control	2020
Proportion of Adult Population without High School Diploma	Education	American Community Survey	2015-2019
Proportion of Households with No Computer Device	Education	American Community Survey	2015-2019
Entropic Measure of Segregation: Proportion of Black Individuals	Social	American Community Survey	2015-2019
Proportion of Households Utilizing Snap	Social	USDA ERS Food Environmental Atlas	2020

Dayton, OH

- Directing funding to qualified census tracts would have included all of Dayton
- These additional qualifiers enabled Dayton to hone its qualification for investment (see previous slide)



National Equity Atlas

- Offers a snapshot of indicators to account for equity in our work.
- Equity indicators are available for Wyandotte County, KS.

Demographics	Economic Vitality	Readiness	Connectedness	Economic Benefits
Race/ethnicity	Wages: \$15/hr	Educational attainment	Commute time	Eliminate rent burden
Nativity and ancestry	Wages: Median	Disconnected youth	Housing burden	Racial equity in income
People of color	Poverty	School poverty	Car access	
Population growth	Working poor	Life expectancy	Air pollution	
Racial generation gap	Unemployment		Neighborhood poverty	
Diversity index	Income growth			
Median age	Income inequality			
	Homeownership			
	Business ownership			
	Business revenue			
	Job and wage growth			
	Job and GDP growth			

Community Workshop #1



March 29 – Community Engagement #1

- Welcome and ARPA Background (Comm. Markley)
- Survey #1 (Communications Team)
 - What's been the most challenging for your community?
 - What are the three greatest challenges for your community?
 - What have you experienced, personally?
 - What's the most important way you want money invested in your community?
 - What are the three other places you would want funding spent?
- Break-Out Groups (Community, Committee + Staff)
 - Community Health and Well-Being
 - Infrastructure and Built Environment
 - Organizational and Community Resilience
- Regroup/Recap (Committee)
- Survey #2 (from Survey #1) (Communications Team)
 - What's the most important way you want money invested in your community?
 - What are the three other places you would want funding spent?
- Next Steps/Thank You (Comm. Markley)



Larimer County, CO

The Larimer County implementation outlines preliminary strategies through recovery action sheets.



The Larimer County recovery plan identifies unmet community needs resulting from the pandemic and path toward recovery.

Road to Recovery

THANK YOU.



AMERICAN RESCUE PLAN ACT

WyCoKCK.org/ARPA