



LET'S TALK

## Land Bank

Monday September 18<sup>th</sup>

- Draft Policy Update Review
- Staff Recommendations
- Removing Policy Decisions
- Next Steps



# PROPOSED POLICY CHANGES



## Yard Extensions

- Will start approving again (6)
- Pricing (6.4)
- Can include undevelopable properties behind home (6.3)

## Gardens

- Will start approving again
- Need to create a program
- Victory Gardens (9.3)
- Community gardens (9.1)
- Urban farms (9.4)

## Options

- Start date at Board of Trustees approval (8.1c)
- 45 days to sign (8.1b)
- Extensions (8.1c)

## Manager's Role

- Administer the Land Bank program
- Notify NBR's and neighborhood groups
- Identify properties for sale
- Determine when an application is ready to be presented
- Set protocols and procedures
- Create strategy (2.7)



# PROPOSED POLICY CHANGES

## YARD EXTENSION PURCHASE PRICE



### 6.4 – Pricing

The price of any yard extension shall be \$0.10 per square foot

| Purchase Price      | Count | % of lots |
|---------------------|-------|-----------|
| \$0 to \$250        | 198   | 4%        |
| \$251 to \$500      | 1838  | 40%       |
| \$501 to \$750      | 1273  | 28%       |
| \$751 to \$1,000    | 440   | 10%       |
| \$1,000 to \$1,250  | 239   | 5%        |
| \$1,251 and Greater | 606   | 13%       |



# POLICY CHANGES



## Land Bank Advisory Board

- 1 additional member for the NBR with the most Land Bank properties (2.3)

## Holds

- Holding property for a 3<sup>rd</sup> party is prohibited (5.7)

## Governing Authority

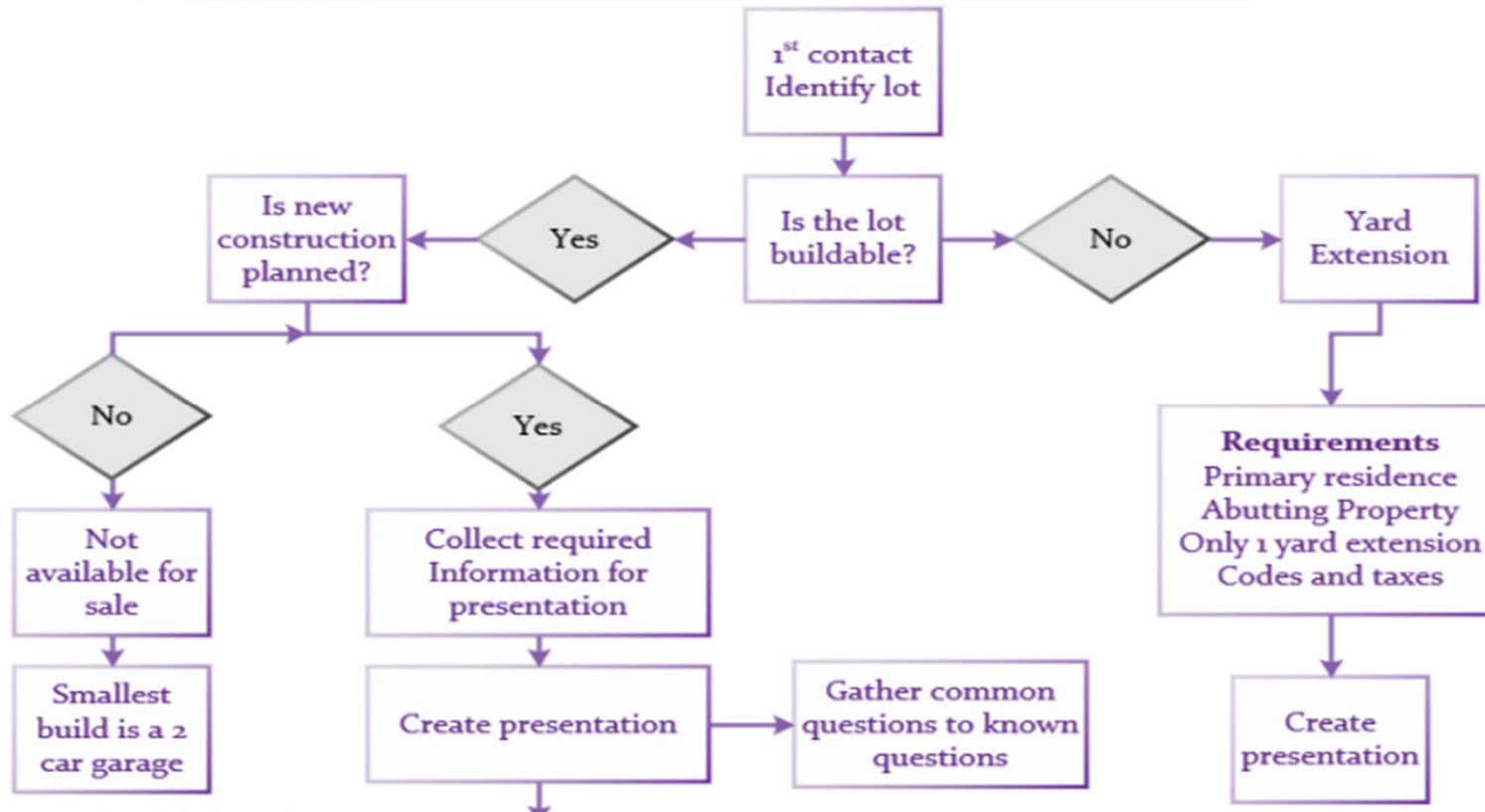
- Policy is a guideline
- Rules can be changed by the Board of Trustees (2.4)



# OVERALL WORKFLOW UPDATES



## Current

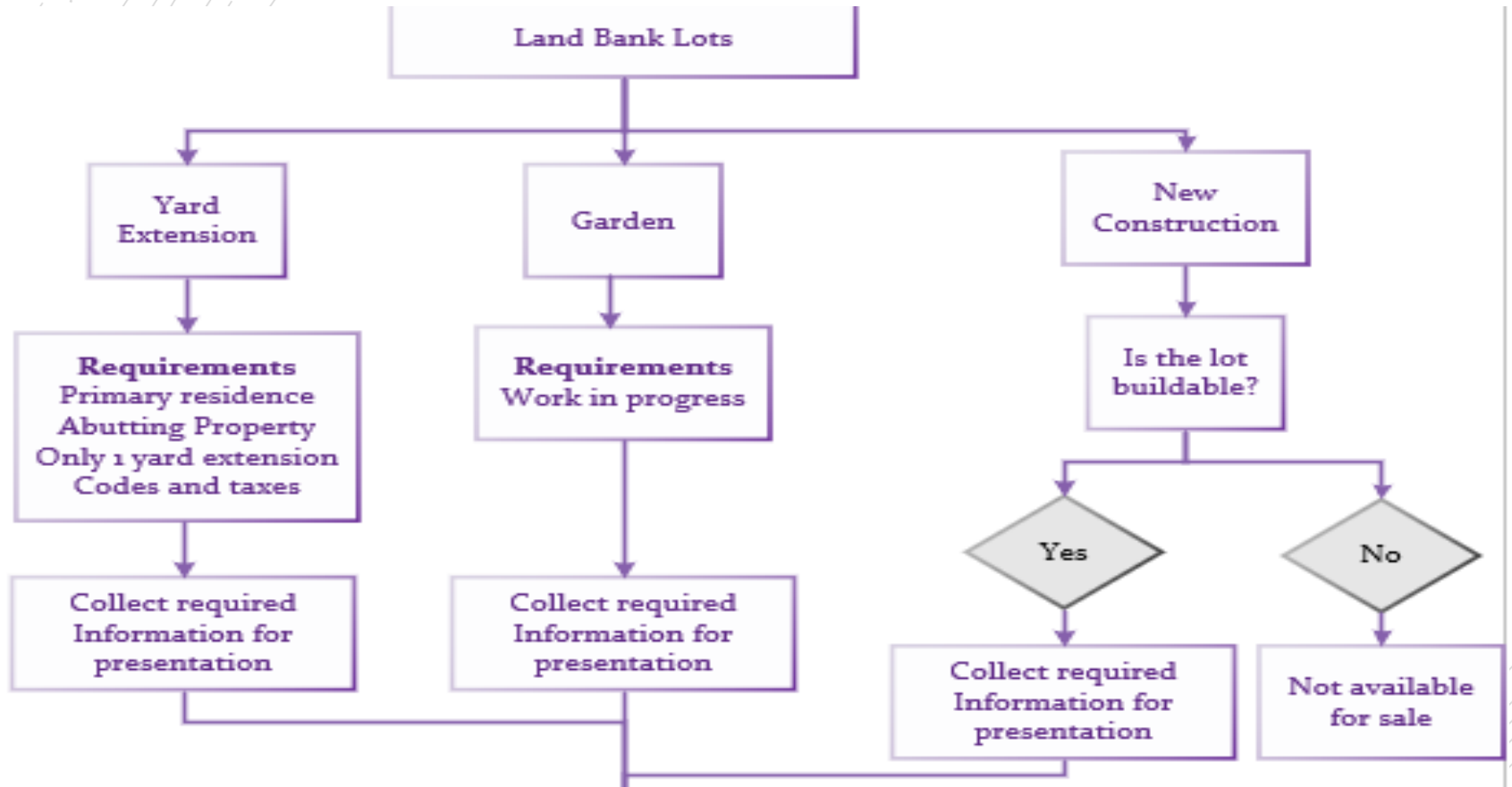




# OVERALL WORKFLOW UPDATES

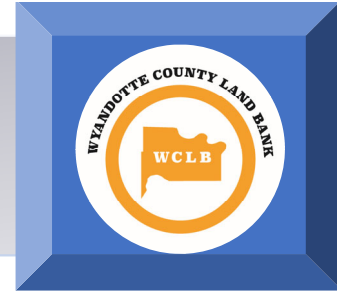


Updated





## NEXT STEPS



### Other Recommendations

- Land Bank Advisory Board
- Notifications
- Staffing

### Next Steps

- Sub-committee to Standing Committee
- Board of Commissioners fall / winter



# LAND BANK ADVISORY BOARD CURRENT POLICY



## Membership

- A Representative from each Neighborhood Business Organizations (NBR)
- 2 Representatives from Executive board of the Livable Neighborhood Task Force
- 10 Members Total

## Current Members

- Groundworks NRG – Keiajah Kelley
- CABA – Edgar Galicia
- Leavenworth Rd Assoc. – Lou Braswell
- Rosedale Development Assoc. – Erin Stryka
- Argentine Betterment Corp – Micah King
- Downtown Shareholders - Director
- Armourdale Renewal Assoc. - Monica Mendez
- Turner Community Connection – Chandra Ward
- Livable Neighborhood Task Force – Carol Newton
- Livable Neighborhood Task Force – Donnie Thomas





# LAND BANK ADVISORY BOARD LOTS PER NBR



Groundworks NRG **3,017**

CABA **487**

Leavenworth Rd Assoc. **399**

Rosedale Development Assoc. **247**

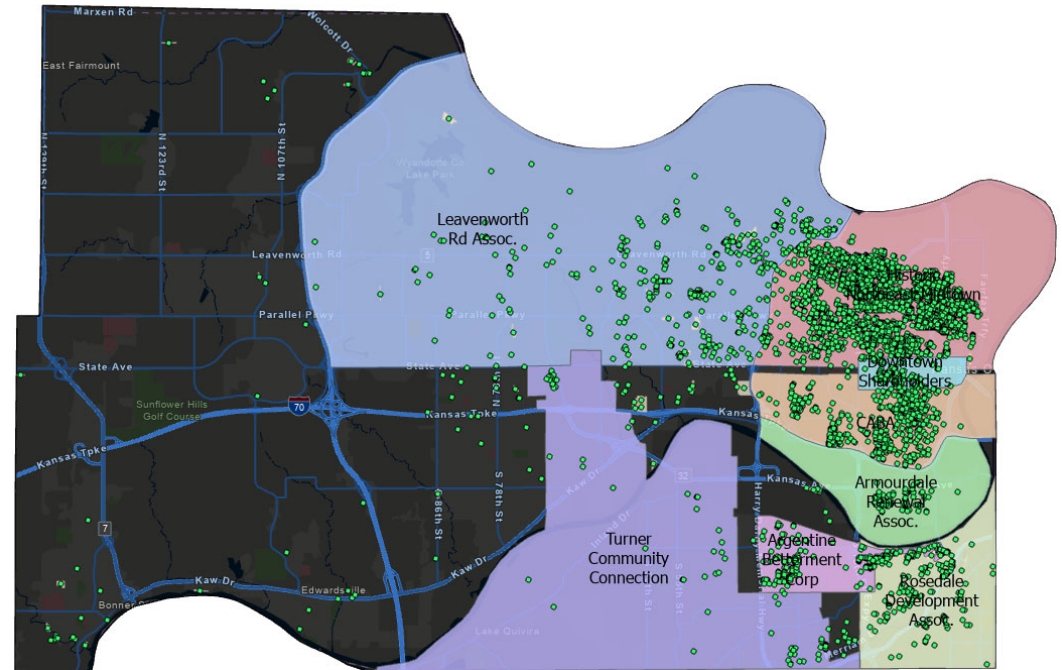
Argentine Betterment Corp **196**

Downtown Shareholders **144**

Armourdale Renewal Assoc. **71**

Turner Community Connection **66**

Outside of NBR **111**



## Comments

- The Northeast is underrepresented in the current Land Bank Advisory Board make up



# LAND BANK ADVISORY BOARD PARTICIPATION



**Land Bank provides several ways to participate.**

**Virtual Meeting**

- 2 – 6 participants

**Online Survey**

- Can review the application and add comments

**Email**

- Requests additional information

**Phone**

- Requests additional information

| Land Bank Advisory Board |                  |                  |                       |                  |
|--------------------------|------------------|------------------|-----------------------|------------------|
| Meeting Date             | Virtual Meeting  | Online Survey    | Email                 | Phone            |
| 4/25/2023                | Carole Newton    | Erin Stryka      | Carole Newton         | Elnora Jefferson |
|                          | Elnora Jefferson |                  | Elnora Jefferson      |                  |
|                          | Keiajah Kelley   |                  |                       |                  |
| 3/21/2023                | Carole Newton    |                  | Carole Newton         | Elnora Jefferson |
|                          | Keiajah Kelley   |                  | Chandra Ward          |                  |
|                          | Chandra Ward     |                  | Elnora Jefferson      |                  |
| 2/21/2023                | Carole Newton    | Carole Newton    | Elnora Jefferson      |                  |
|                          | Keiajah Kelley   | Elnora Jefferson | Erin Stryka           |                  |
|                          | Chandra Ward     |                  |                       |                  |
|                          | Elnora Jefferson |                  |                       |                  |
|                          | Jemima Nesthant  |                  |                       |                  |
| 1/24/2023                | Erin Stryka      |                  |                       |                  |
|                          | Keiajah Kelley   | Elnora Jefferson | Elnora Jefferson      | Elnora Jefferson |
|                          | Elnora Jefferson | Erin Stryka      | Erin Stryka           |                  |
|                          | Jemima Nesthant  | Carole Newton    | Louetta Braswell      |                  |
| 12/27/2022               | Phone Number ??? |                  |                       |                  |
|                          | Elnora Jefferson |                  | Downtown Shareholders |                  |
|                          | Chandra Ward     |                  | Elnora Jefferson      |                  |



# CURRENT NOTIFICATIONS TIMELINE



## April 2023

| S  | M  | T  | W  | T  | F  | S  |
|----|----|----|----|----|----|----|
|    |    |    |    |    |    | 1  |
| 2  | 3  | 4  | 5  | 6  | 7  | 8  |
| 9  | 10 | 11 | 12 | 13 | 14 | 15 |
| 16 | 17 | 18 | 19 | 20 | 21 | 22 |
| 23 | 24 | 25 | 26 | 27 | 28 | 29 |
| 30 |    |    |    |    |    |    |

## June 2023

| S  | M  | T  | W  | T  | F  | S  |
|----|----|----|----|----|----|----|
|    |    |    |    | 1  | 2  | 3  |
| 4  | 5  | 6  | 7  | 8  | 9  | 10 |
| 11 | 12 | 13 | 14 | 15 | 16 | 17 |
| 18 | 19 | 20 | 21 | 22 | 23 | 24 |
| 25 | 26 | 27 | 28 | 29 | 30 |    |

## MAY 2023

| S  | M  | T  | W  | T  | F  | S  |
|----|----|----|----|----|----|----|
|    | 1  | 2  | 3  | 4  | 5  | 6  |
| 7  | 8  | 9  | 10 | 11 | 12 | 13 |
| 14 | 15 | 16 | 17 | 18 | 19 | 20 |
| 21 | 22 | 23 | 24 | 25 | 26 | 27 |
| 28 | 29 | 30 | 31 |    |    |    |

### Timeline for Approval

- Application submissions **4/4 – 5/2**
- Application deadline for next meeting **5/2**
- Send applications to Land Bank Advisory Board **5/9**
- Send applications to Neighborhood Groups **5/9**
- Virtual meeting Staff **5/16**
- Virtual meeting Land Bank Advisory Board **5/23**
- Submit Agenda items to Clerk **5/24**
- Agenda review **5/25**
- Present at standing committee **6/5**
- Full Commission Vote for approval - **6/29**

### Applicant time to be approved

- Application submitted 4/4 = 86 Days
- Application submitted 5/2 = 58 Days

### Land Bank Advisory Board / Neighborhood Groups Notice

- 51 Days



# STAFFING LEVELS



| Land Bank Staffing          |             |           |                 |                |
|-----------------------------|-------------|-----------|-----------------|----------------|
| Name                        | City        | State     | # of Properties | # of Employees |
| Detroit Land Bank Authority | Detroit     | Michigan  | 72,673          | 147            |
| Kansas City Land Bank       | Kansas City | Missouri  | 2,700           | 5              |
| Shelby County Land Bank     | Memphis     | Tennessee | 4,500           | 7              |
| Little Rock                 | Little Rock | Arkansas  | 47              | 1              |
| Wyandotte County Land Bank  | Kansas City | Kansas    | 4,297           | 1              |