



2022 Unified Government Community Survey Benchmarking Analysis

Presented to the Unified Government
of Wyandotte County, Kansas

April 2022



Benchmarking Analysis

2022 Unified Government Community Survey

ETC Institute's *DirectionFinder*® program was originally developed in 1999 to help community leaders in Kansas and Missouri use statistically valid community survey data as a tool for making better decisions.

Since November 1999, the survey has been administered in more than 300 cities and counties in 49 states. This report contains benchmarking data from two sources: (1) a national survey that was administered by ETC Institute to a random sample of more than 9,000 residents in the continental United States during the fall and winter of 2021 and (2) surveys that have been administered by ETC Institute in 20 communities in the Kansas City metro area between January 2020 and March 2022. The Kansas and Missouri communities represented in this report include:

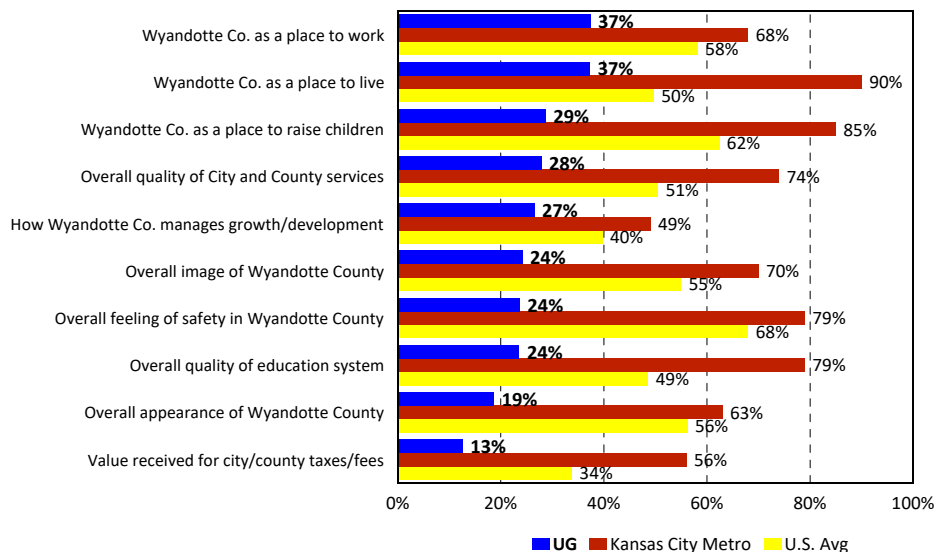
- | | |
|---------------------------|-------------------------|
| • Atchison, Kansas | • Mission, Kansas |
| • Belton, Missouri | • North Kansas City, MO |
| • Blue Springs, Missouri | • Olathe, Kansas |
| • Edgerton, Kansas | • Overland Park, Kansas |
| • Gladstone, Missouri | • Platte City, Missouri |
| • Harrisonville, Missouri | • Raymore, Missouri |
| • Johnson County, Kansas | • Richmond, Missouri |
| • Kansas City, Missouri | • Roeland Park, Kansas |
| • Lenexa, Kansas | • Smithville, Missouri |
| • Merriam, Kansas | • Spring Hill, Kansas |

National Benchmarks. The first set of charts on the following pages show how the overall results for the Unified Government compare to the national average based on the results of a national survey that was administered by ETC Institute to a random sample of more than 9,000 U.S. residents.

Kansas City Metro Benchmarks. The second set of charts show the highest, lowest, and average (mean) levels of satisfaction in the 20 communities listed above. The mean rating is shown as a vertical line, which indicates the average level of satisfaction for the metropolitan Kansas City area. The actual ratings for the Unified Government are listed to the right of each chart. The dot on each bar shows how the results for the Unified Government compare to the other communities in the Kansas City area where the *DirectionFinder*® survey has been administered.

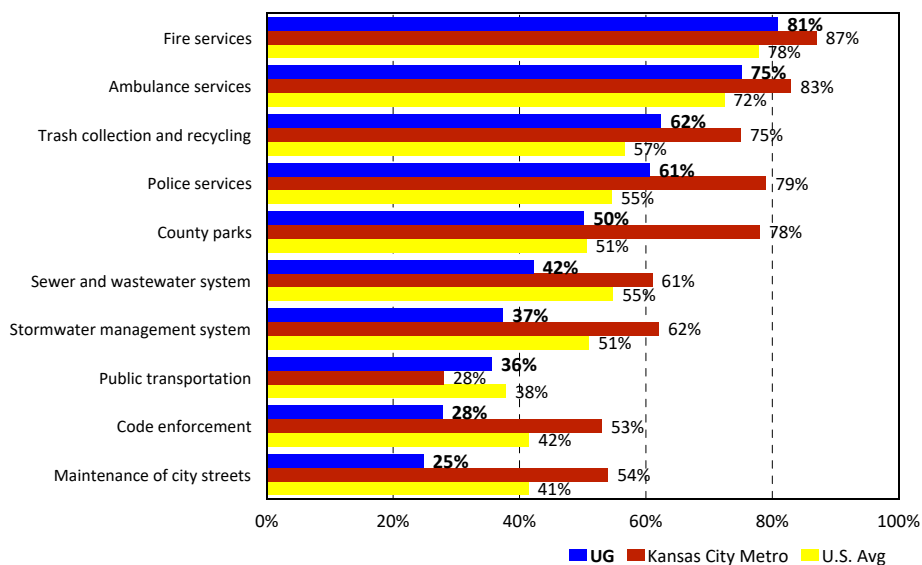
Satisfaction with Issues that Influence Perceptions of the City: UG vs. Kansas City Metro vs. U.S.

by percentage of respondents who rated the item 4 or 5 on a 5-point scale where 5 was "very satisfied" and 1 was "very dissatisfied"



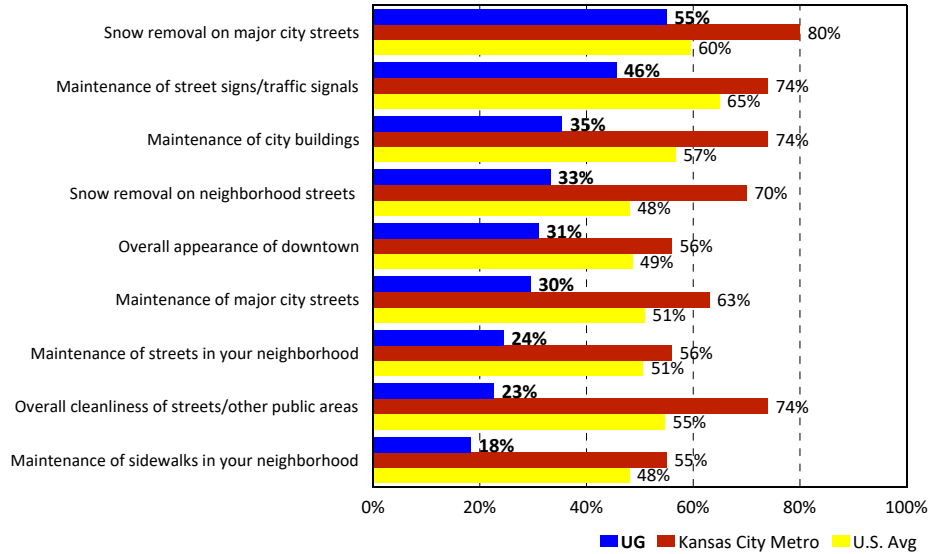
Overall Satisfaction with City/County Services: UG vs. Kansas City Metro vs. U.S.

by percentage of respondents who rated the item 4 or 5 on a 5-point scale where 5 was "very satisfied" and 1 was "very dissatisfied"



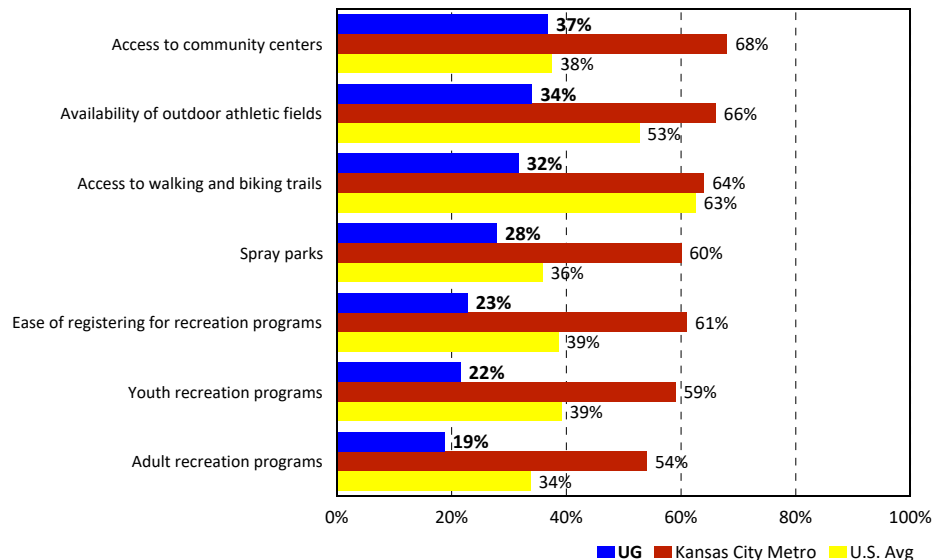
Overall Satisfaction with Maintenance Services: UG vs. Kansas City Metro vs. U.S.

by percentage of respondents who rated the item 4 or 5 on a 5-point scale
where 5 was "very satisfied" and 1 was "very dissatisfied"



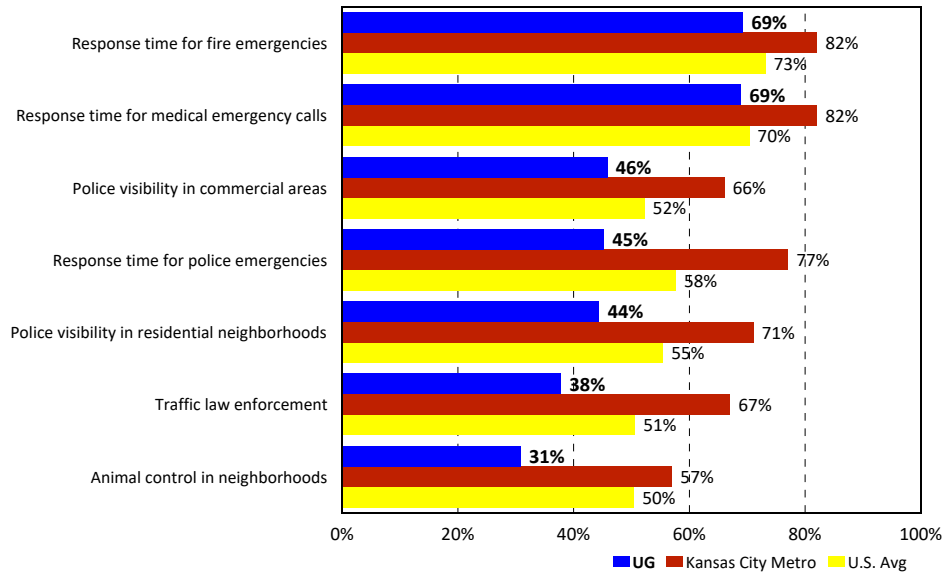
Overall Satisfaction with Parks and Recreation Services: UG vs. Kansas City Metro vs. U.S.

by percentage of respondents who rated the item 4 or 5 on a 5-point scale
where 5 was "very satisfied" and 1 was "very dissatisfied"



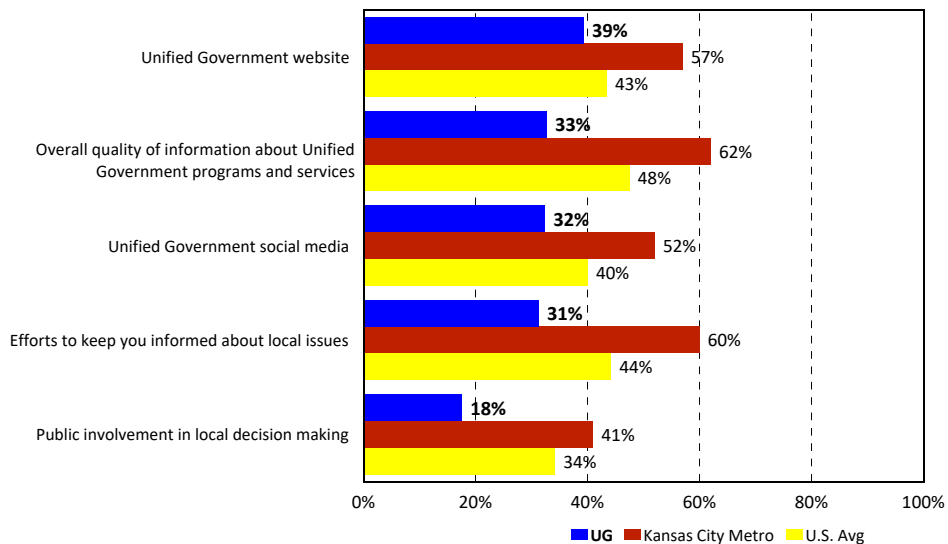
Overall Satisfaction with Public Safety: UG vs. Kansas City Metro vs. U.S.

by percentage of respondents who rated the item 4 or 5 on a 5-point scale
where 5 was "very satisfied" and 1 was "very dissatisfied"



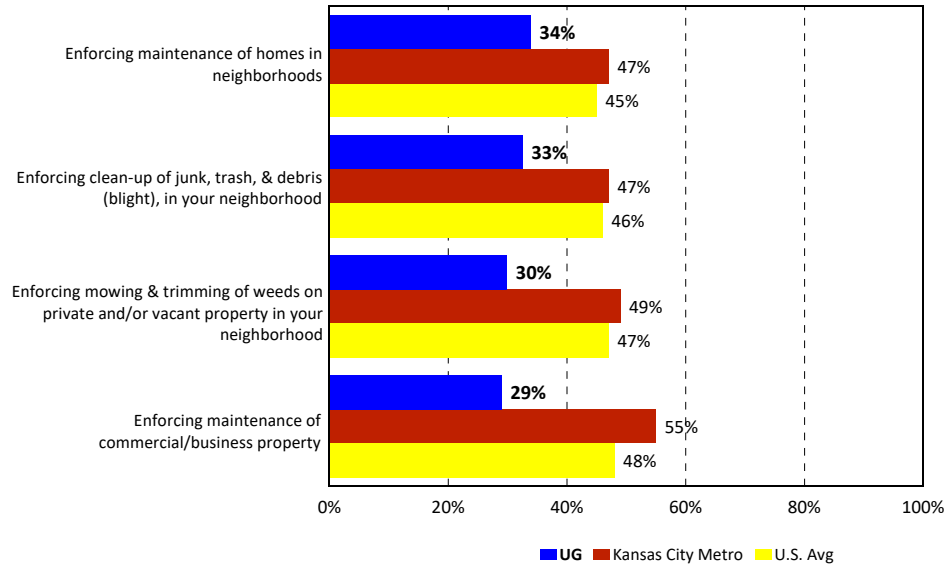
Overall Satisfaction with Communication Services: UG vs. Kansas City Metro vs. U.S.

by percentage of respondents who rated the item 4 or 5 on a 5-point scale
where 5 was "very satisfied" and 1 was "very dissatisfied"



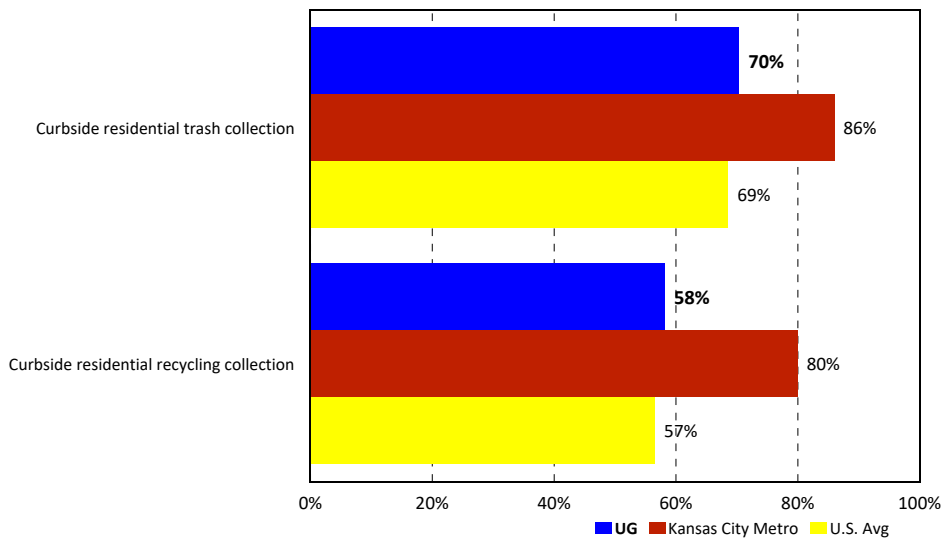
Overall Satisfaction with Code Enforcement: UG vs. Kansas City Metro vs. U.S.

by percentage of respondents who rated the item 4 or 5 on a 5-point scale
where 5 was "very satisfied" and 1 was "very dissatisfied"



Overall Satisfaction with Waste Management Services: UG vs. Kansas City Metro vs. U.S.

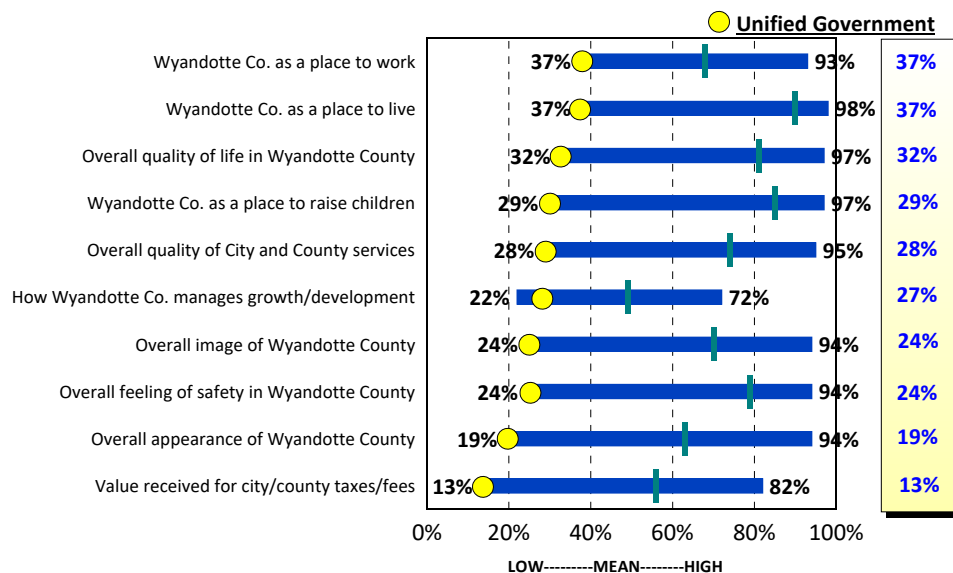
by percentage of respondents who rated the item 4 or 5 on a 5-point scale
where 5 was "very satisfied" and 1 was "very dissatisfied"



Metropolitan Kansas City Benchmarks

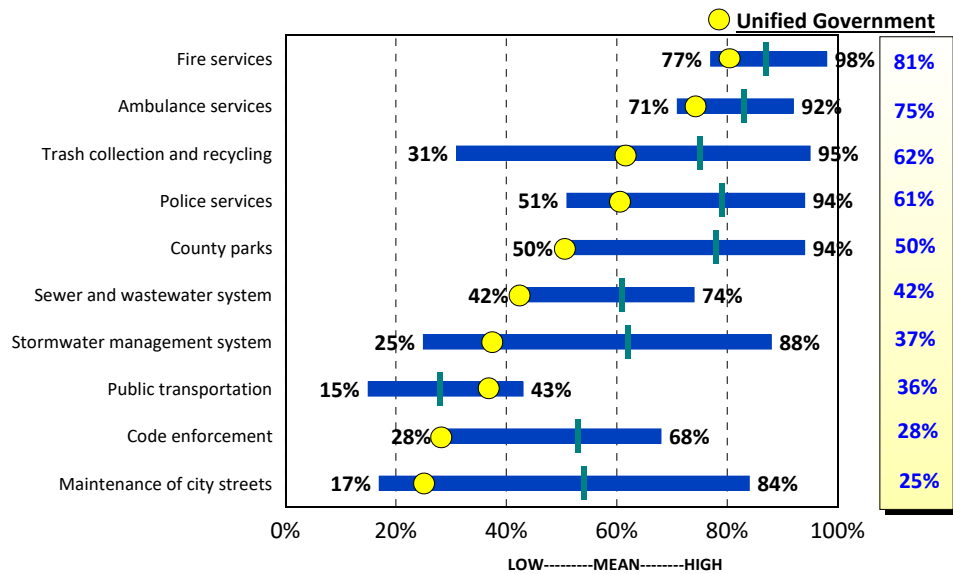
Perceptions that Kansas City Area Residents Have of the City in Which They Live in 2022

by percentage of respondents who rated the item as a 4 or 5 on a 5-point scale



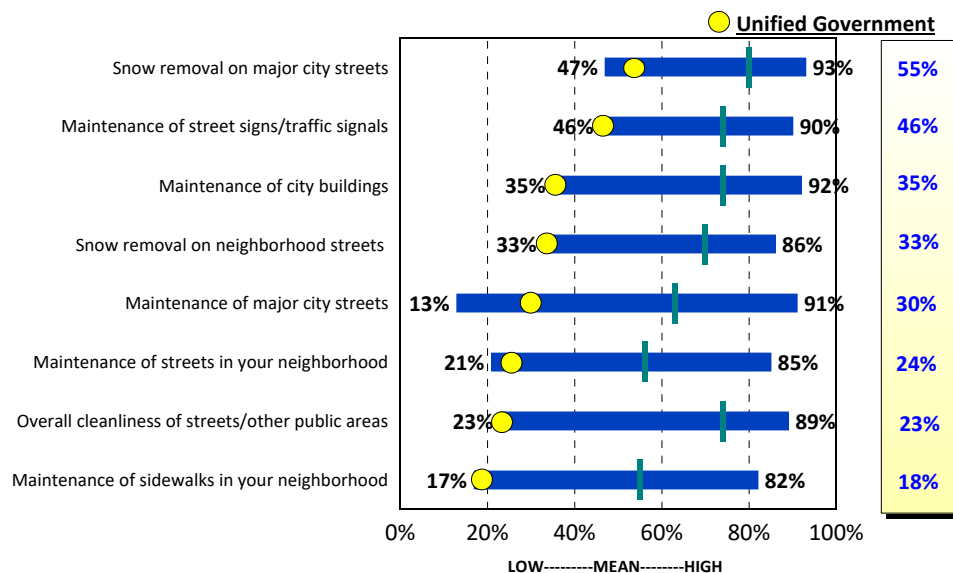
Overall Satisfaction with City Services Provided by Cities in the Kansas City Area in 2022

by percentage of respondents who rated the item as a 4 or 5 on a 5-point scale



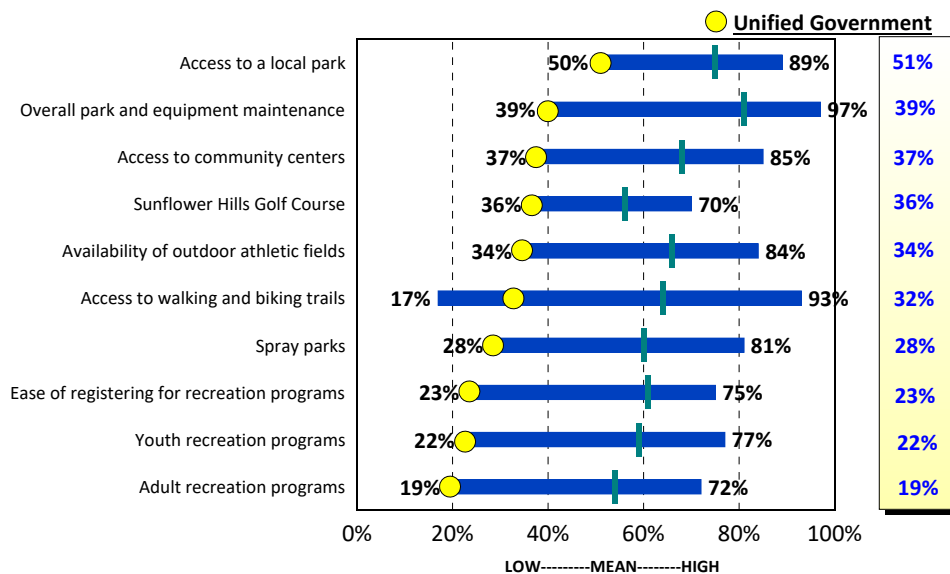
Overall Satisfaction with Maintenance Services Provided by Cities in the Kansas City Area in 2022

by percentage of respondents who rated the item as a 4 or 5 on a 5-point scale



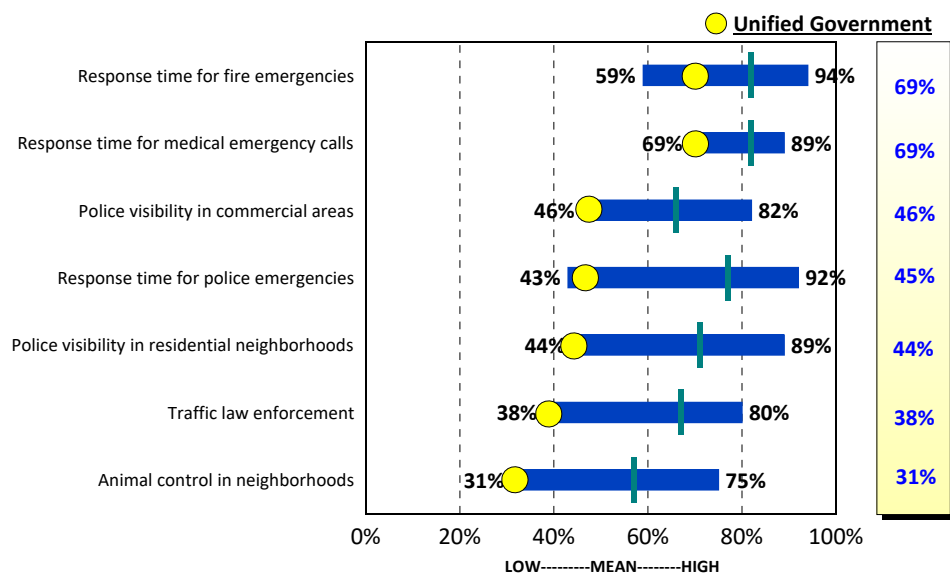
Overall Satisfaction with Parks and Recreation Services Provided by Cities in the Kansas City Area in 2022

by percentage of respondents who rated the item as a 4 or 5 on a 5-point scale



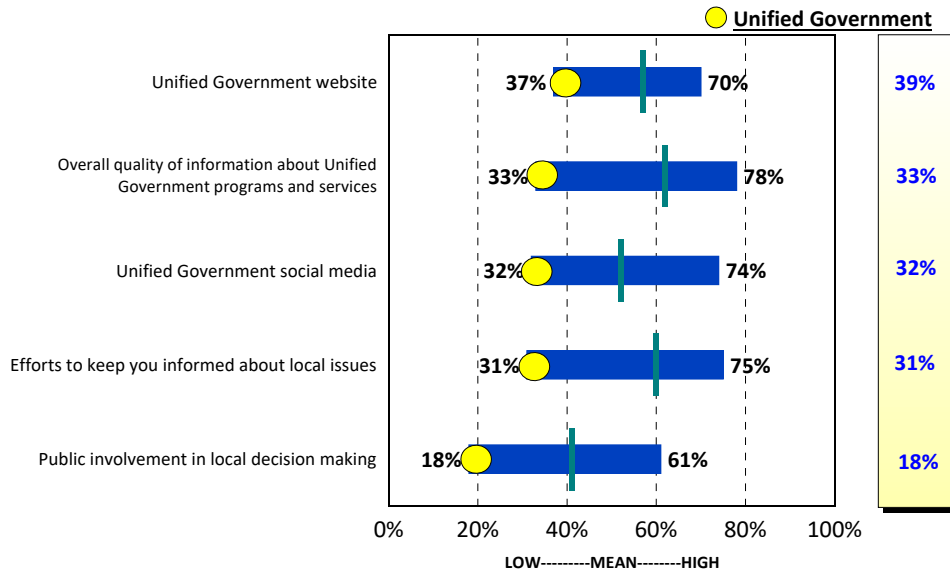
Overall Satisfaction with Public Safety Services Provided by Cities in the Kansas City Area in 2022

by percentage of respondents who rated the item as a 4 or 5 on a 5-point scale



Overall Satisfaction with Communication Services Provided by Cities in the Kansas City Area in 2022

by percentage of respondents who rated the item as a 4 or 5 on a 5-point scale



Overall Satisfaction with Code Enforcement Provided by Cities in the Kansas City Area in 2022

by percentage of respondents who rated the item as a 4 or 5 on a 5-point scale

