

November 2023

Livable Neighborhoods News

Mission of Livable Neighborhoods

To improve the quality of life in our community through organized neighborhood and government partnerships that provide information, training, resources, and a forum for open discussion.

Office: Neighborhood Resource Center (NRC), 4953 State Ave

Hours: 8am-5pm (NRC lobby closes at 4pm)

Contact: livableneighborhoods@wycokck.org or 913-573-8737



Stay connected with us via Facebook or
Receive our weekly e-news by emailing livableneighborhoods@wycokck.org

Reminders

November 8th — 8TH District Townhall

November 10th — Veteran's Day

November 12th — Community Spay & Neuter Day

November 15th — Last Day of Fall Open Burn

November 16th — Full Commission Meeting

November 17th — Mayor's Tree Lighting

November 23rd — Thanksgiving

November 30th — Full Commission Meeting

Catch someone
DOING
something
GOOD in your
neighborhood

Have you seen someone doing
something good in your Wyandotte
County or KCK neighborhood?

Send in a photo with a brief description
to livableneighborhoods@wycokck.org
and they will be featured in an upcoming
e-newsletter.

We want to recognize them!

"There is no
power for change
greater than a
community
discovering what
it cares about."

MARGARET J. WHEATLEY

"ALONE, WE
CAN DO SO
LITTLE;
TOGETHER,
WE CAN DO
SO MUCH"

HELEN KELLER

DO
something
GOOD in your
neighborhood

Let's Talk Trash!

To recycle, or not to recycle, that is the question! Knowing what items can and cannot be placed curbside for trash and recycling pickup can be difficult. Continue reading to learn the answers to some of the burning questions you have about waste collection in Wyandotte County.

What can I place curbside for trash pickup?

Any household waste that is not hazardous and is not construction debris can be placed curbside for pickup. Household waste should be put in a trash container and should not weigh more than 50 lbs. Mattresses and carpets can be placed at the curb, but mattresses must be wrapped and carpets rolled tight and tied with a string.

How do I get rid of hazardous waste and construction debris?

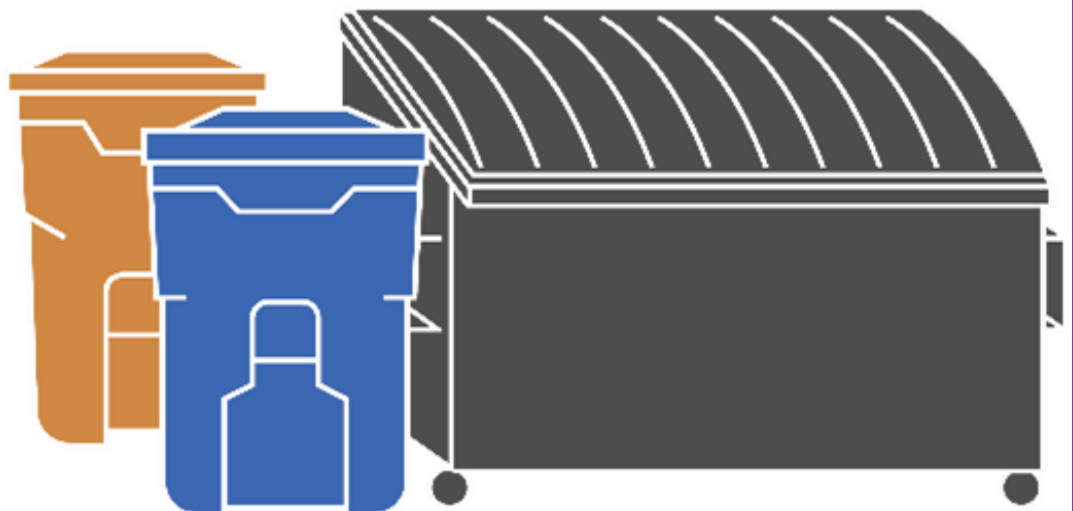
Hazardous waste are things like harsh chemicals, gasoline and other crude oils, herbicides and insecticides, tires, etc. Construction debris is materials like roofing, paint, paint thinners, putty, calk, grout, etc. These items cannot be picked up curbside. Instead, dispose of these items at the Hazardous Waste Disposal Center (2443 S 88TH ST. 66111) during Household Hazardous Day events which occur throughout the year. Sorry, electronic waste not accepted! You'll have to wait for Dumpster Days to throw out those.

What can I place curbside for recycling pickup?

Recyclable items like paper, cardboard, aluminum cans, etc. can be placed curbside for pickup. Curbside recycling should be placed in biodegradable bags. Glass cannot be recycled curbside, but can be recycled at the Yard Waste & Recycling Center (3241 PARK DR. 66102) along with yard waste and other compostable items.

Are there other places that I can recycle glass?

Glass can also be recycled by visiting one of the several purple Ripple Glass bins locations around Wyandotte County.



KITCHEN RESTORE PROJECT

The Kitchen Restore Project provides basic kitchen items to those with minimal or no resources for cooking simple meals.

DONATIONS OF NEW OR GENTLY USED KITCHEN ITEMS ARE NEEDED!

Get involved by helping to create kits, purchase items from our Kitchen Restore Wish-list or by making a monetary donation through this link on our KSRE website.
<https://bit.ly/3ZCOv4Z>



K-State Research & Extension Wyandotte Co.
1216 N 79th St.
Kansas City, KS 66112
Office hours: 8:00am to 4:30pm Monday - Friday
www.wyandotte.k-state.edu
913-299-9301

Drop off Anytime during office hours or on our Special Drop Off Day! Friday, November 3 Extra help is available to unload on this day!

K-STATE
Research and Extension
Master Food Volunteer
Wyandotte County



Kansas City Kansas
Community College.

ITEMS ACCEPTED

New or gently used

- Measuring Spoons
- Measuring Cups (Dry and Liquid)
- Cutting Boards/Mats
- Colanders/Mesh Strainers
- Mixing Bowls
- Paring Knives
- Chef Knives
- Spatulas
- Rubber Spatulas
- Slotted/Stirring Spoons
- Whisks
- Tongs
- Plastic Pitchers
- Vegetable Peelers
- Pot Holders
- Handheld Can Openers
- Baking Dishes
- Pans (Lids if Available)
- Skillets (Lids if Available)
- Pots (Lids if Available)
- Glass Storage Ware with Lids
- Dinner Plates
- Forks/Knives/Spoons
- Cereal Bowls
- Drinking Glasses/Cups
- Coffee Mugs
- Cooking Sheets
- Dish towels

Monetary Donations are always welcome!

Make checks payable to: Wyandotte County Extension

Mail or drop off at: Wyandotte County Extension Office

Attn: Kitchen Restore, 1216 N. 79th St., Kansas City, KC 66112

K-STATE
Research and Extension
Master Food Volunteer
Wyandotte County

K-State Research and Extension is committed to providing equal opportunity for participation in all programs, services and activities. Program information may be available in languages other than English. Reasonable accommodations for persons with disabilities, including alternative means for communication (e.g., Braille, large print, audio tape, and American Sign Language) may be requested by contacting the event contact Jo McLeod two weeks prior to the start of the event (insert deadline date) at (913) 299-9300 or jmcleod@ksre.k-state.edu. Requests received after this date will be honored when it is feasible to do so. Language access services, such as interpretation or translation of vital information will be provided free of charge to limited English proficient individuals upon request.



PARKS & RECREATION

THANKSGIVING FAMILY FUN DAY



JOIN UGPRD FOR A FAMILY MEAL, FUN AND FELLOWSHIP
REGISTRATION REQUIRED (LIMITED SPACE)

NOVEMBER 4TH

TIME: 11 AM TO 2 PM

KENSINGTON GYM
2900 STATE AVE.
913-551-0407



SCAN TO REGISTER



wycokck.org/wycoparks



CAMERA REGISTRY
PROGRAM

WORKING TOGETHER TO KEEP KANSAS CITY, KANSAS SAFE!

Please share the location of your security cameras with the Kansas City, Kansas Police Department.

Sharing does not mean the PD will have access to your camera.

There is no additional cost involved with sharing your camera location.

We will not share your information with anyone else, and will only contact you if a crime occurs in your neighborhood.

Share your security camera locations with the Kansas City, Kansas Police Department:

connectkck.org



SCAN TO REGISTER YOUR CAMERA(S)
Scan the QR code with your phone's camera to register now!





2024 — 2028

Wyandotte County Community Health Improvement Plan

Health Issue Planning Sessions

Join Us!

Help inform the goals, measures and strategies that will guide how we will collaboratively address key health priorities in the 2024-2028 Community Health Improvement Plan (CHIP).

There are 2 sessions for each topic. Both sessions will build on each other and we encourage your participation in both if possible. Snacks and light refreshments will be served during sessions.



KCK Public Library - South Branch
3104 Strong Ave,
Kansas City, KS 66106



SCAN ME

REGISTER TODAY!

Scan the QR code above, or go to

wycokck.org/CHIP



Housing

Session 1: October 25th, 10 am - noon
Session 2: November 7th, 10 am - noon



Jobs & Education

Session 1: October 25th, 1 - 3 pm
Session 2: November 6th, 1 - 3 pm



Violence Prevention

Session 1: October 25th, 1 - 3 pm
Session 2: November 6th, 1 - 3 pm



Health Care Access

Session 1: October 26th, 10 am - noon
Session 2: November 6th, 10am - noon



Behavioral Health

Session 1: October 26th, 1 - 3 pm
Session 2: November 7th, 1 - 3 pm



Harvesters

Mobile Food Distribution



**Sponsored by
LRA & Sunset Hills Church**

In partnership with
Community Oriented Policing Unit
Of the
Kansas City Kansas Police Department

**6347 Leavenworth Road
Kansas City, KS**

Kansas City/ Wyandotte County, Kansas proof of residency required for first time visitors

*Food distribution to begin at approximately 1:30 p.m.
Line closes when food distribution begins this process assures everyone in line will receive some fresh food*



1st and 3rd Fridays of the month



Please enter from North 63rd Street and Roswell Avenue
(from N. 63rd Street turn west onto Roswell, turn north onto N 64th Street go to the west entrance of the Sunset Hills Church lot)



KCKPD
BUILDING COMMUNITY TIES
Transparency · Integrity
Engagement · Safety

A CELEBRATION OF COMMUNITY

It's that time again.... when our community comes together to celebrate the love and happiness that keeps Wyandotte County moving.

We are excited for this year's festival and invite you to be a part of it! We are looking for:

- Volunteers
- Entertainment
- Food Trucks
- Vendors
- Games for All Ages

Be a part of the tradition!

Please email **Chandra Green** at chgreen@wycokck.org by Friday, October 27, 2023 if interested.

Mayor's
Christmas
Tree Lighting
Festival

SAVE THE DATE
Friday, November 17, 2023
4PM-9PM
Memorial Hall
600 N. 7th Street Tfwy
Kansas City, KS 66101