



KCKFD STRATEGIC PLAN

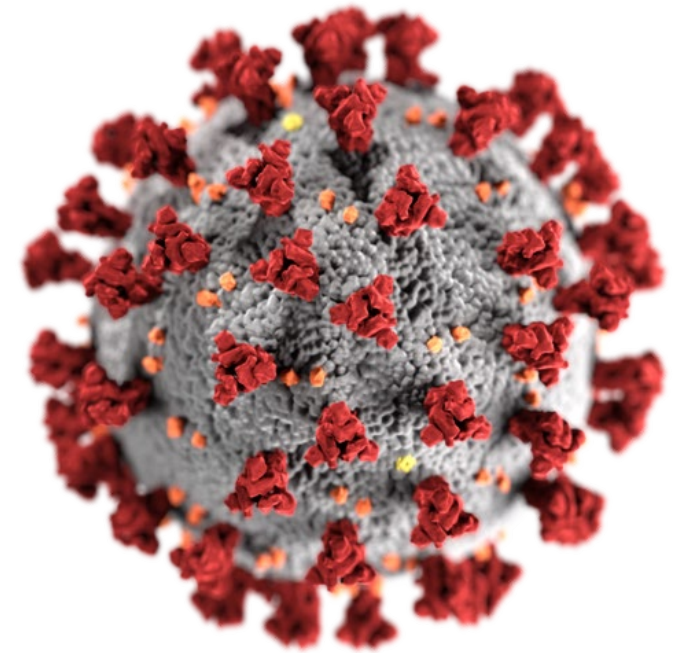
Chief Michael Callahan

April 30, 2020

- 
- **FUTURE STATION CONSTRUCTION AND LOCATION**
 - **STAFFING STATION 12**
 - **ENHANCING RESPONSE CAPABILITY**

COVID-19 RESPONSE

- KCKFD has had no positive COVID-19 tests and has no members in quarantine
- The entire KCKFD has stepped up and demonstrated the utmost dedication and extraordinary efforts
- On a special note, the EMS Division, in conjunction with the Logistics Division, did an outstanding job, beginning in January, of pre-ordering, pre-staging, and delivering PPE supplies before supply chains became choked or interrupted
- The KCKFD anticipates that our PPE supplies will remain sufficient for the duration of the pandemic



ENHANCED PUBLIC & FIREFIGHTER HEALTH & SAFETY

- In furtherance of our Firefighter Cancer Reduction Initiative, the Department purchased and distributed the following:
 - Two sets of bunker gear for all Firefighters;
 - Two protective hoods for all Firefighters;
 - A self-contained bunker gear carry bag to all Firefighters;
 - Ventilated bunker gear lockers for all Fire Stations;
 - Carcinogen extracting bunker gear washers for most Fire Stations;
 - Plymovent Diesel Exhaust Systems to several Fire Stations.

IMPROVED READINESS

- Purchased 4 Pumpers, 4 Trucks, and 2 Ambulances
- Increased the AOR covered by 4 minute and 8 minute response times in the city
- Initiated the first ever mutual/auto aid agreements with neighboring jurisdictions for supplemented response
- Initiated the first ever interdepartmental training with neighboring jurisdictions for collaborative instruction
- Equipped each Firefighter with an integrated, personal Thermal Imaging Camera (TIC)
- Equipped all Truck Companies with e-DRAULIC extrication tools
- Delivered robust and recurrent training on emerging Fire Service trends
- Increased the number of KCKFD personnel responding on every type of alarm

MAINTAINING FIDUCIARY RESPONSIBILITY

Fire & EMS make up ~15.3% of the total Unified Government budget totaling \$61,004,869

In an effort to be the best stewards of those funds, the Department has:

- Implemented Telestaff, an automated manpower program to streamline and more efficiently manage the daily staffing and overtime operations of the Department
- Implemented a cyclical apparatus replacement program to ensure greater compliance with NFPA 1901 guidance and reduce repair and maintenance costs
- Implemented a lease/turn-in program for fire apparatus to rotate the apparatus that have the highest call volume, reducing repair and maintenance costs
- By purchasing a new pumper type, we reduced the cost by over \$200,000 per purchase



KCKFD STATION LOCATION PLAN

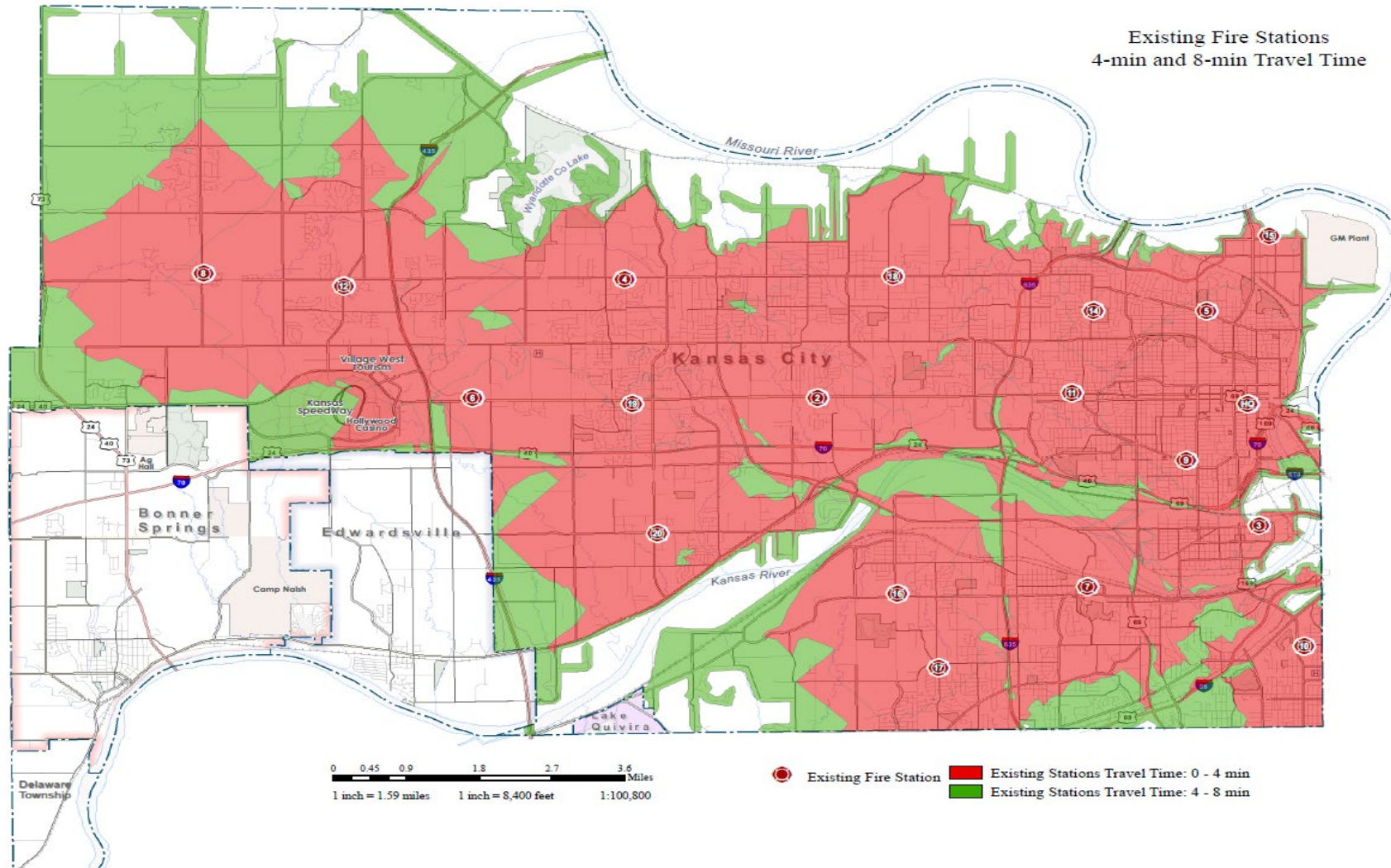
0 0.45 0.9 1.8 2.7 3.6 Miles
1 inch = 1.59 miles 1 inch = 8,400 feet 1:100,800

Existing Fire Station
Existing Stations Travel Time: 0 - 4 min
Existing Stations Travel Time: 4 - 8 min

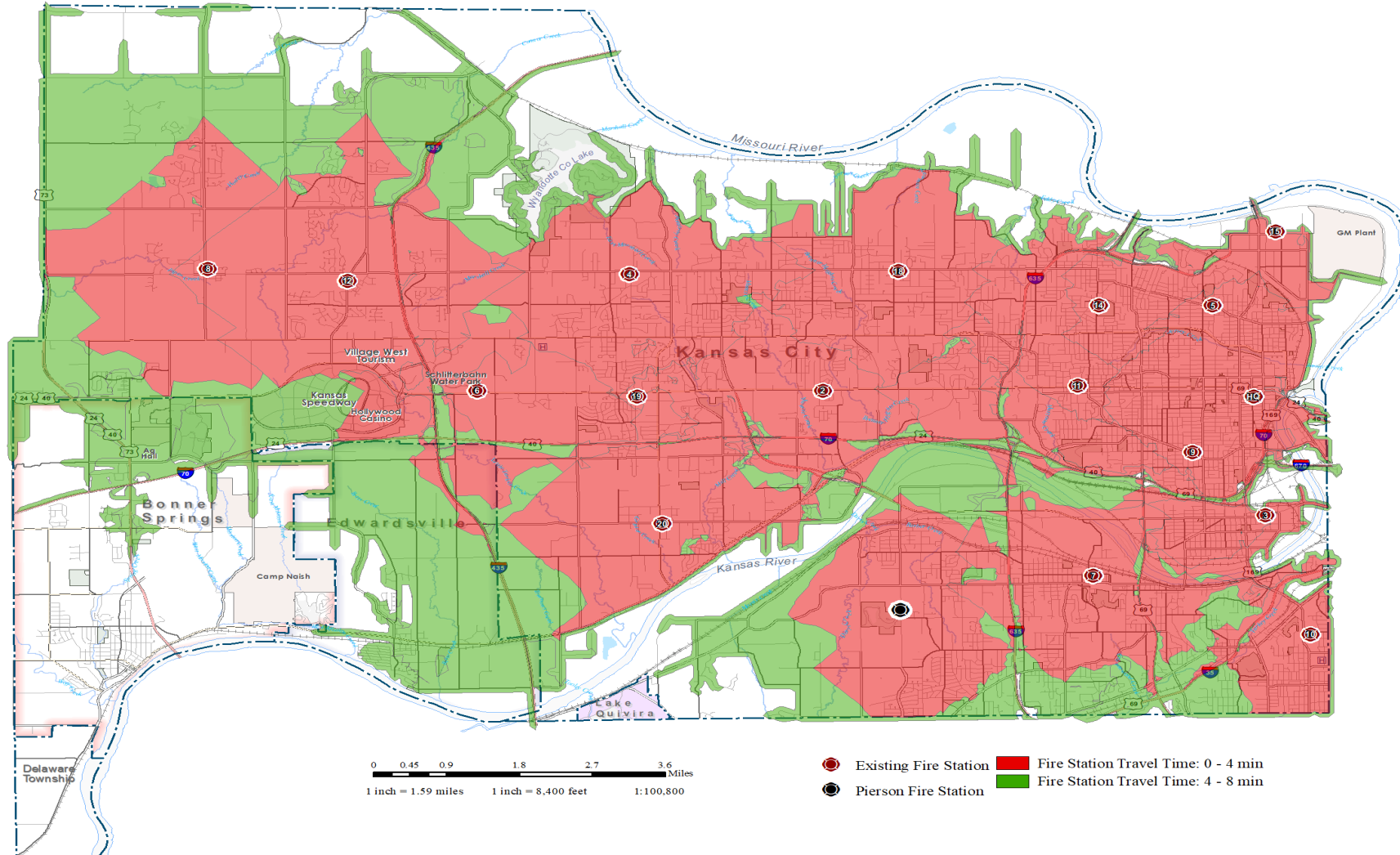
STATION 16 & STATION 17 – TURNER

- The current Stations 16 & 17 were constructed as Township Volunteer Stations in 1940 and 1955 respectively
- As these stations were constructed for volunteer Fire Departments, they were never meant to house a paid, professional, platoon scheduled Fire Department
- Construct a new station in Turner for Pumpers 16 & 17 on UG land/Pierson Park in 2021
- One of those companies would remain a pumper, the other would become an aerial apparatus (truck)
- Structural fires require both a pumper and a truck to effectively and expeditiously suppress and extinguish the fire
- Although pumpers and trucks have unique tactical assignments, those assignments are complimentary and require collaboration to achieve the overall strategic objective
- EMS 17 would also be relocated to the new station

CURRENT 4-MINUTE & 8-MINUTE TRAVEL TIME DISTRIBUTION (ASSUMES OPENING OF NEW STATION 12)



PROPOSED PIERSON PARK STATION WITH 4 AND 8-MIN TRAVEL TIME BOUNDARIES



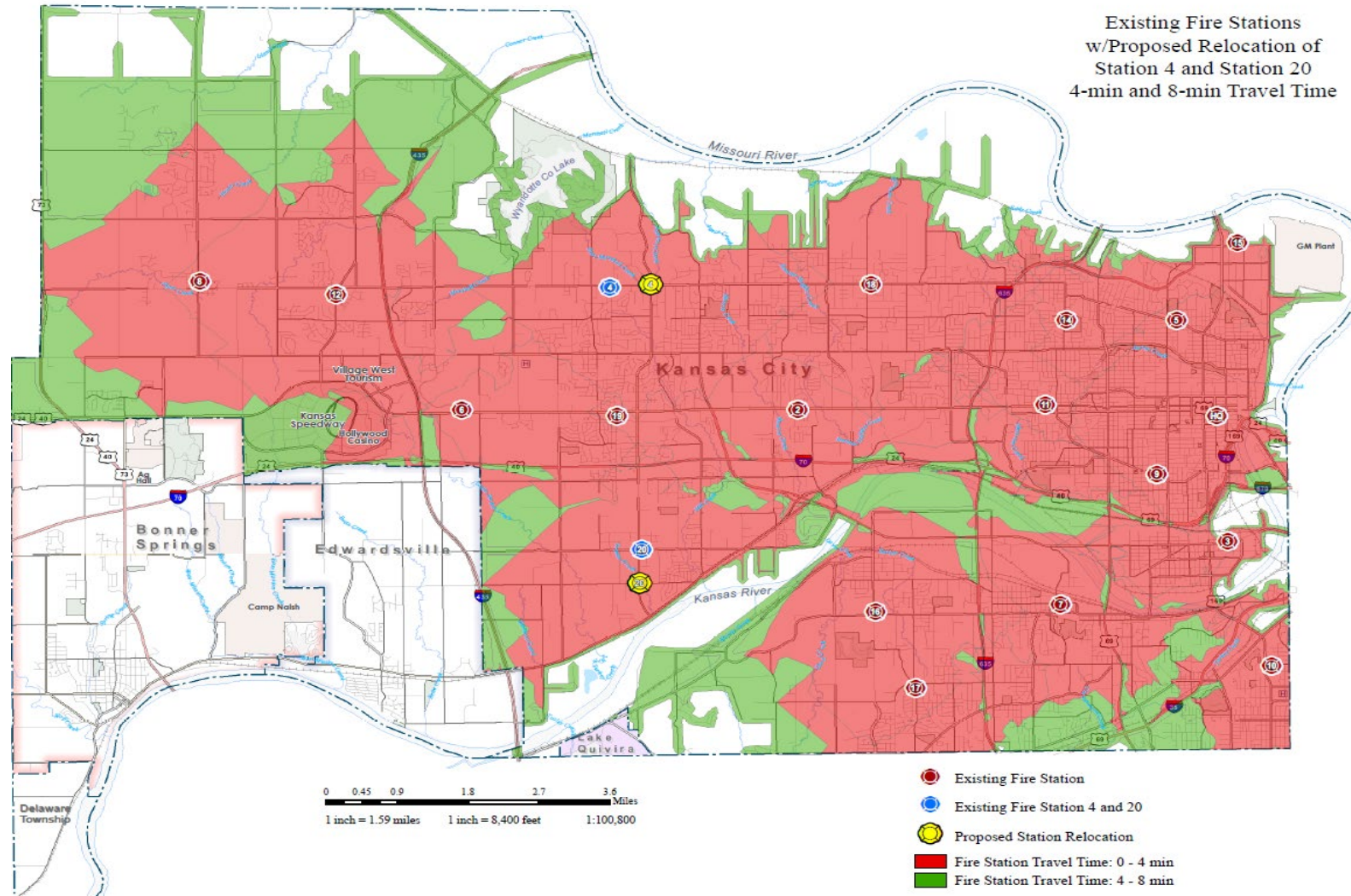


FUTURE FIRE STATION CONSTRUCTION

STATION 20 – MUNCIE

- Construct a new station for Pumper 20 (Muncie) in 2023
- The current Station 20 was constructed as a Township Volunteer Station in 1967
- As this station was constructed for a volunteer Fire Department, it was never meant to house a paid, professional, platoon scheduled Fire Department
- Presently, Station 20 has been repaired and refurbished to the greatest degree possible
- Significant issues that remain include-the structural integrity is compromised by rotted, deteriorated, and shifting roof trusses causing the walls to shift and crack; increased settling has caused ongoing drainage and plumbing issues; the building's limits it to space for only one bathroom

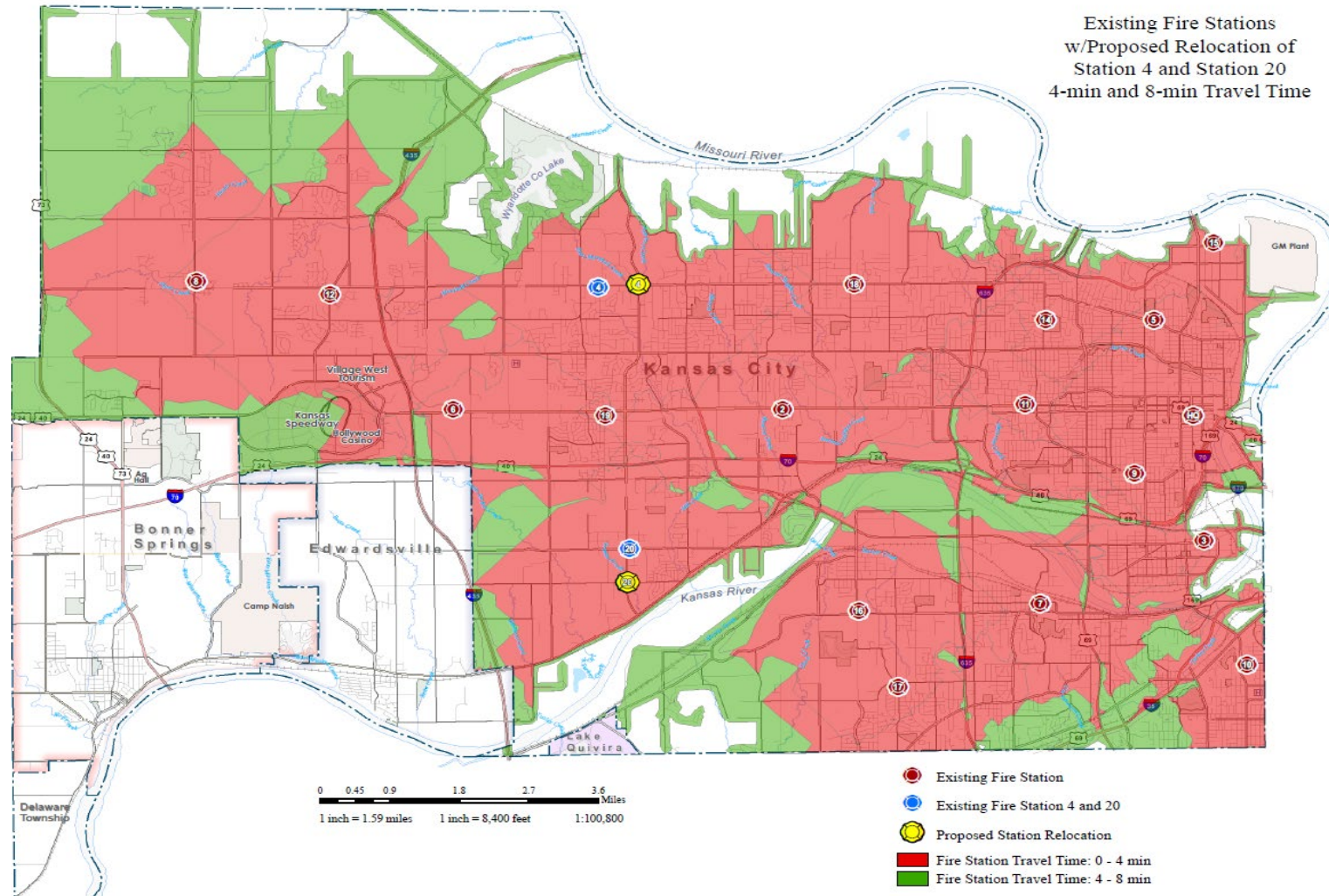
PROPOSED STATION 20 WITH 4 AND 8-MIN TRAVEL TIME BOUNDARIES



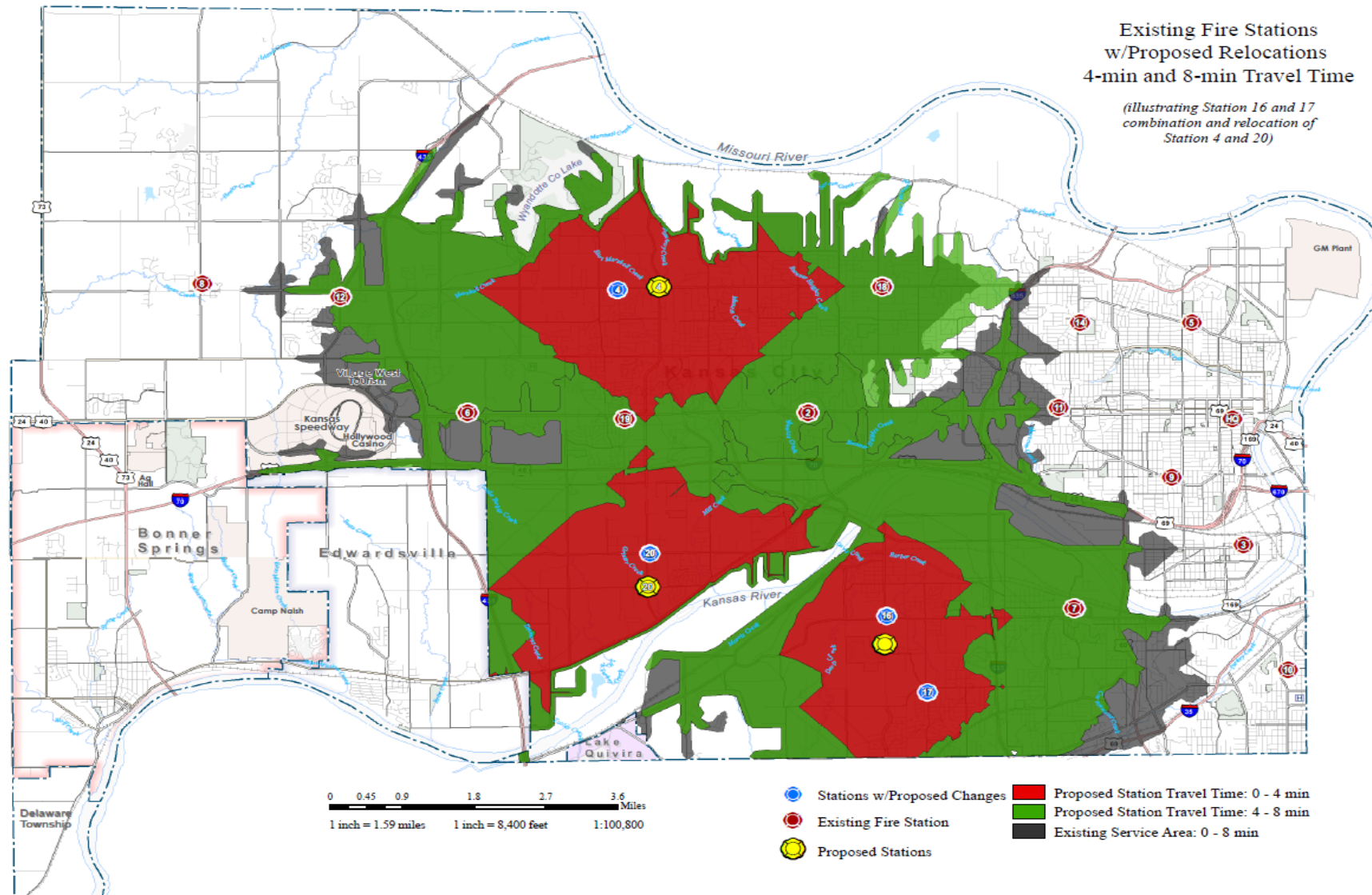
STATION 4 – BETHEL

- Construct a new station for Pumper 4 (Bethel) in 2025
- The current Station 4 was constructed as a Township Volunteer Station in 1957
- As this station was constructed for a volunteer Fire Department, it was never meant to house a paid, professional, platoon scheduled Fire Department
- Presently, Station 4 has been repaired and refurbished to the greatest degree possible
- Significant issues that remain include-the retaining wall has collapsed toward the station; increased settling has caused ongoing drainage and plumbing issues, as a result, the water frequently drains towards the living quarters causing continual water intrusion and mold
- Station 4 would be built in collaboration with a KCKPD Traffic Division structure

PROPOSED STATION 4 WITH 4 AND 8-MIN TRAVEL TIME BOUNDARIES



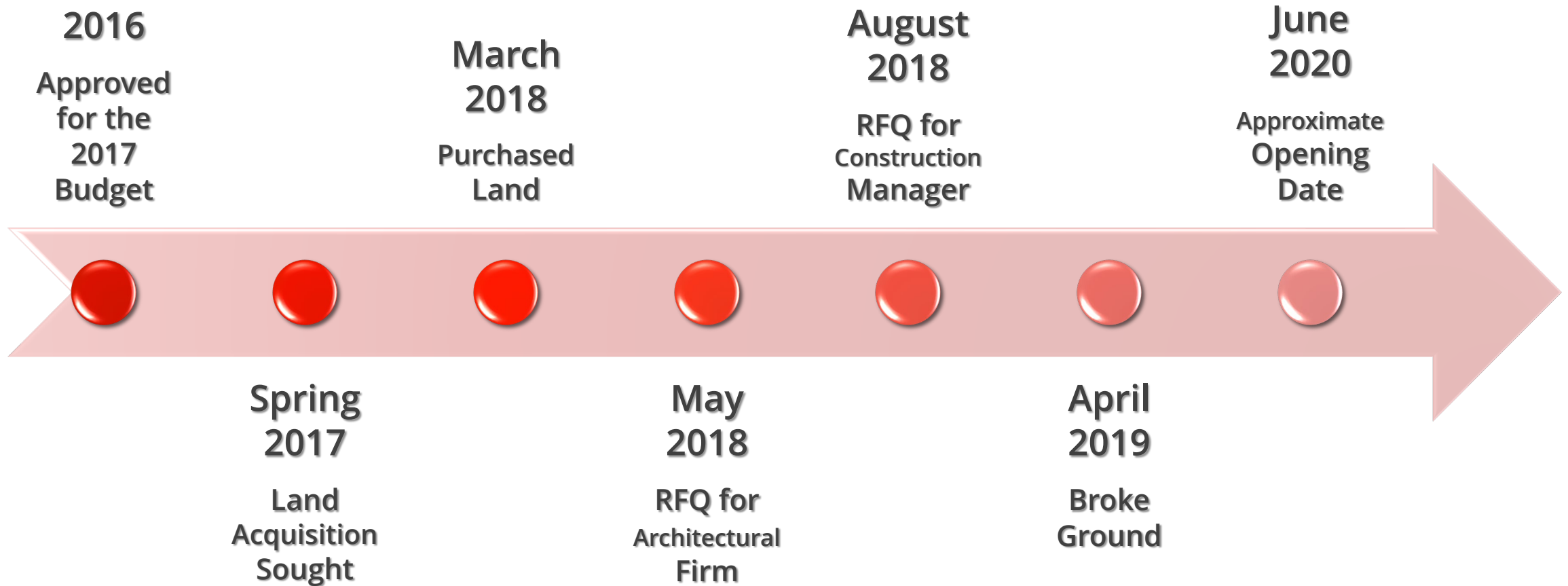
IMPACT OF PROPOSED STATION LOCATIONS



ADJUSTING FIRE RESPONSE TO MEET EMERGING NEEDS

CONTINUING HIGH-QUALITY COVERAGE IN FAIRFAX INDUSTRIAL AREA
STAFFING NEW STATION IN WESTERN WYANDOTTE COUNTY

STATION 12 TIMELINE



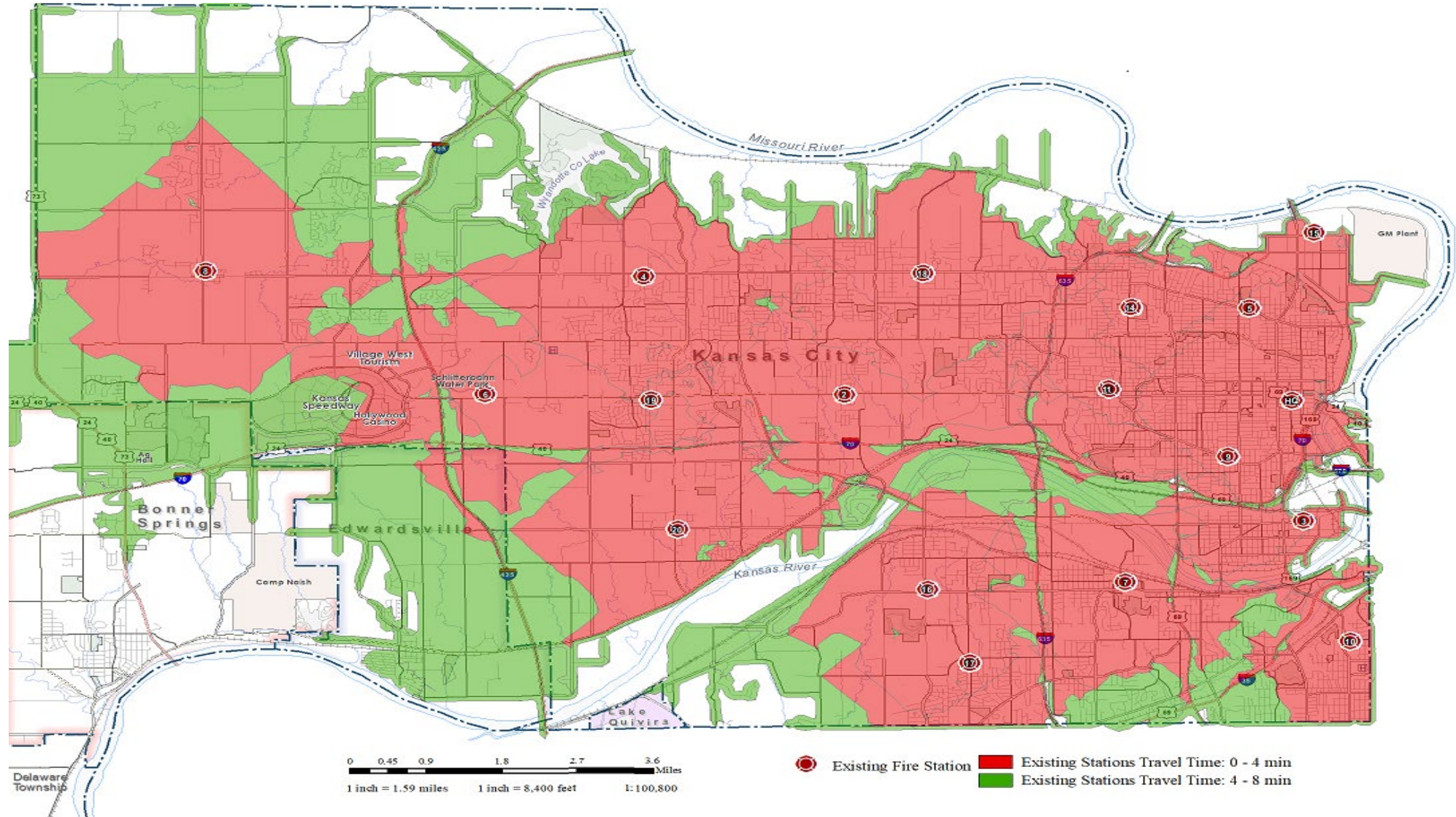
PRINCIPALS AND STANDARDS UTILIZED FOR ADJUSTING RESPONSE MATRICES

- Utilize the existing number of Fire & EMS Companies
- Determine the methodology needed to ensure maximum, reliable Fire and EMS coverage for the entire city
- Utilize data-driven decisions that aim to enhance coverage while ensuring fiscal pragmatism
- Determine the locations and configurations that provide the best speed and weight of response for the entire city by:
 - Conducting a rigorous GIS and Response evaluation
 - Utilizing the data analytics to verify which existing Fire and EMS companies can be relocated to improve existing response coverage for the entire city
 - Continuing regular, periodic reviews of data analytics to assist with recurring response coverage examination as city demographics shift

STAFFING STATION 12

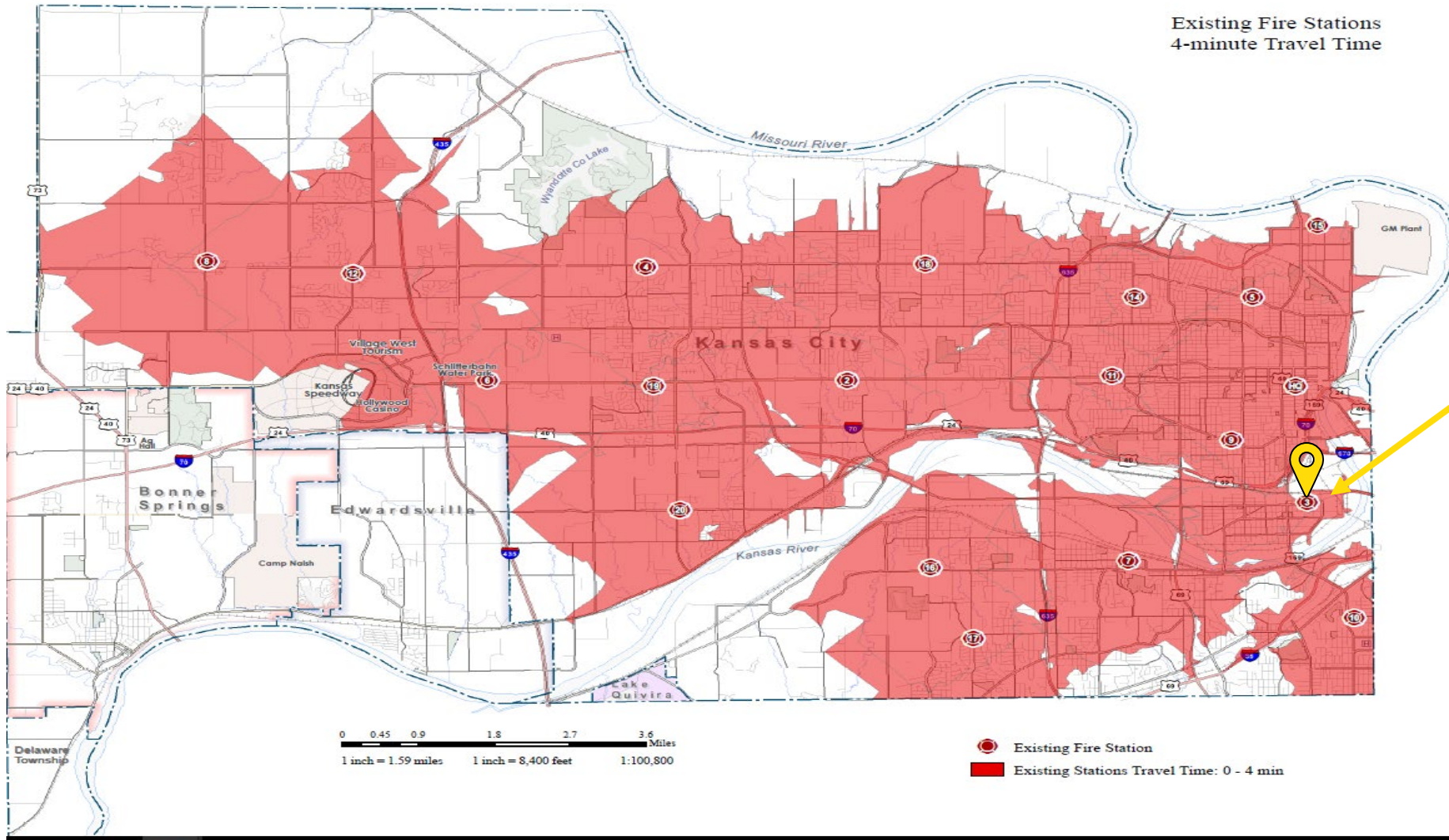
- The new Station 12, located at 2913 Hutton Road in western Wyandotte County, is slated to open in May of 2020
- The Fire Department was tasked with staffing Station 12 (2913 Hutton Road) by relocating an existing fire company
 - KCKFD conducted data analysis to determine which existing fire company could be relocated without impacting, or minimally impacting, existing response coverage
- This analysis suggested three (3) potential companies for relocation
 - The companies identified were Quint 3, Pumper 10, and Pumper 15
 - These companies are positioned on the extreme eastern, southeastern, and northeastern boundaries of KCK respectively
 - Consequently, their *Areas of Response* (AOR) are extremely truncated

CURRENT 4 AND 8 MINUTE RESPONSE



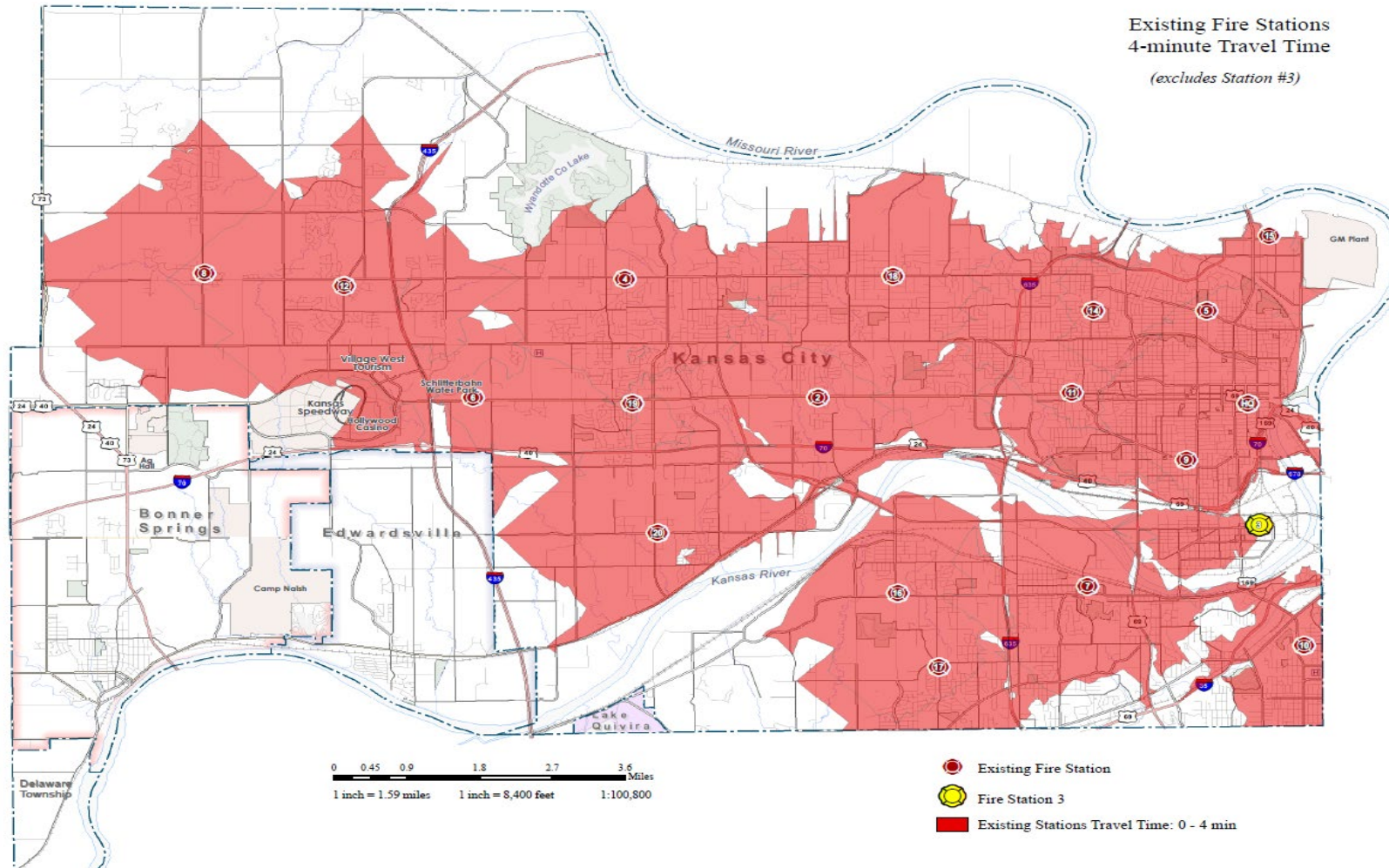
CURRENT 4-MINUTE TRAVEL TIME

QUINT 3: KANSAS AVE

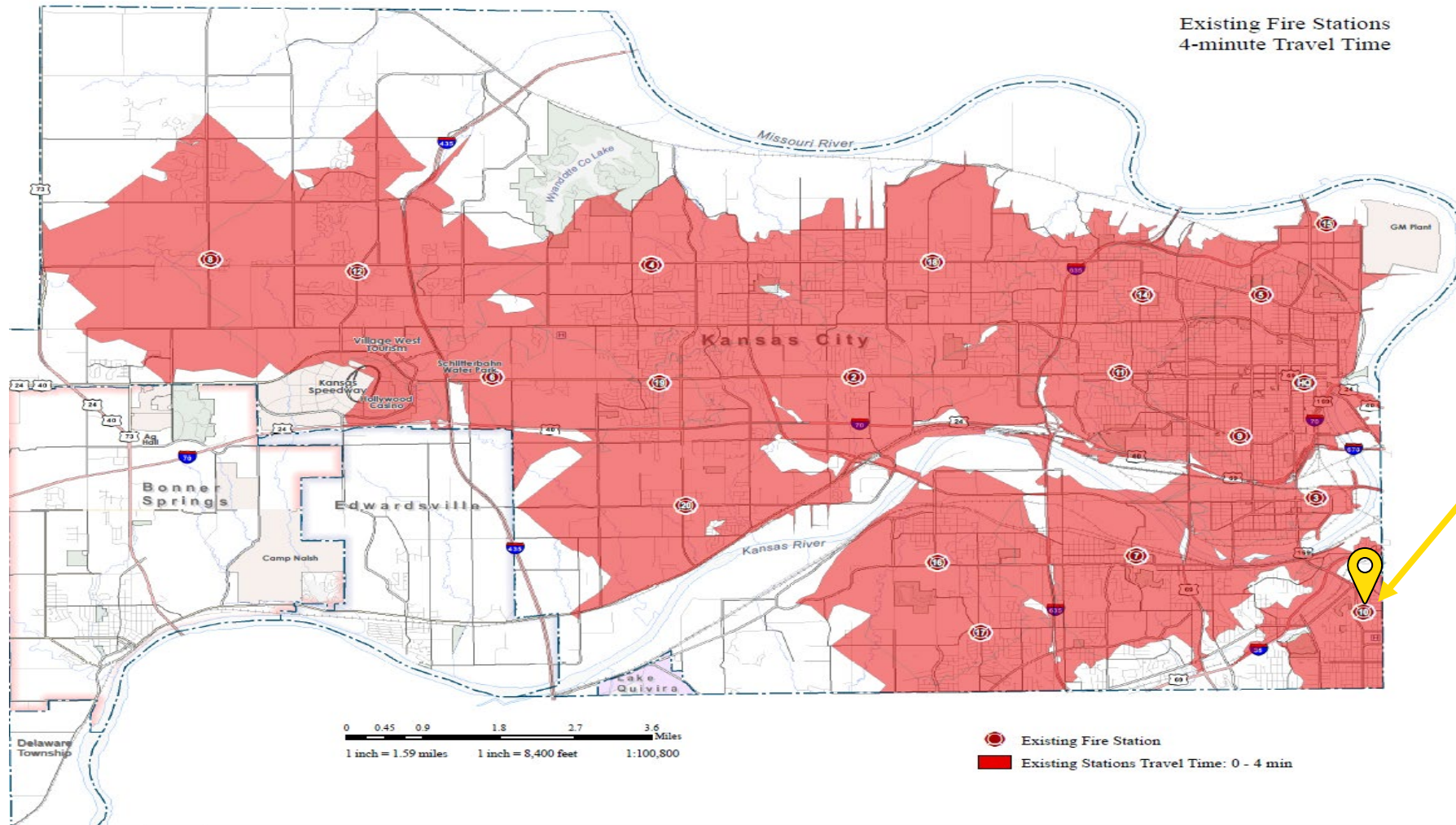


COVERAGE EFFECT OF MOVING QUINT 3

1,321 RESPONSES IN TERRITORY

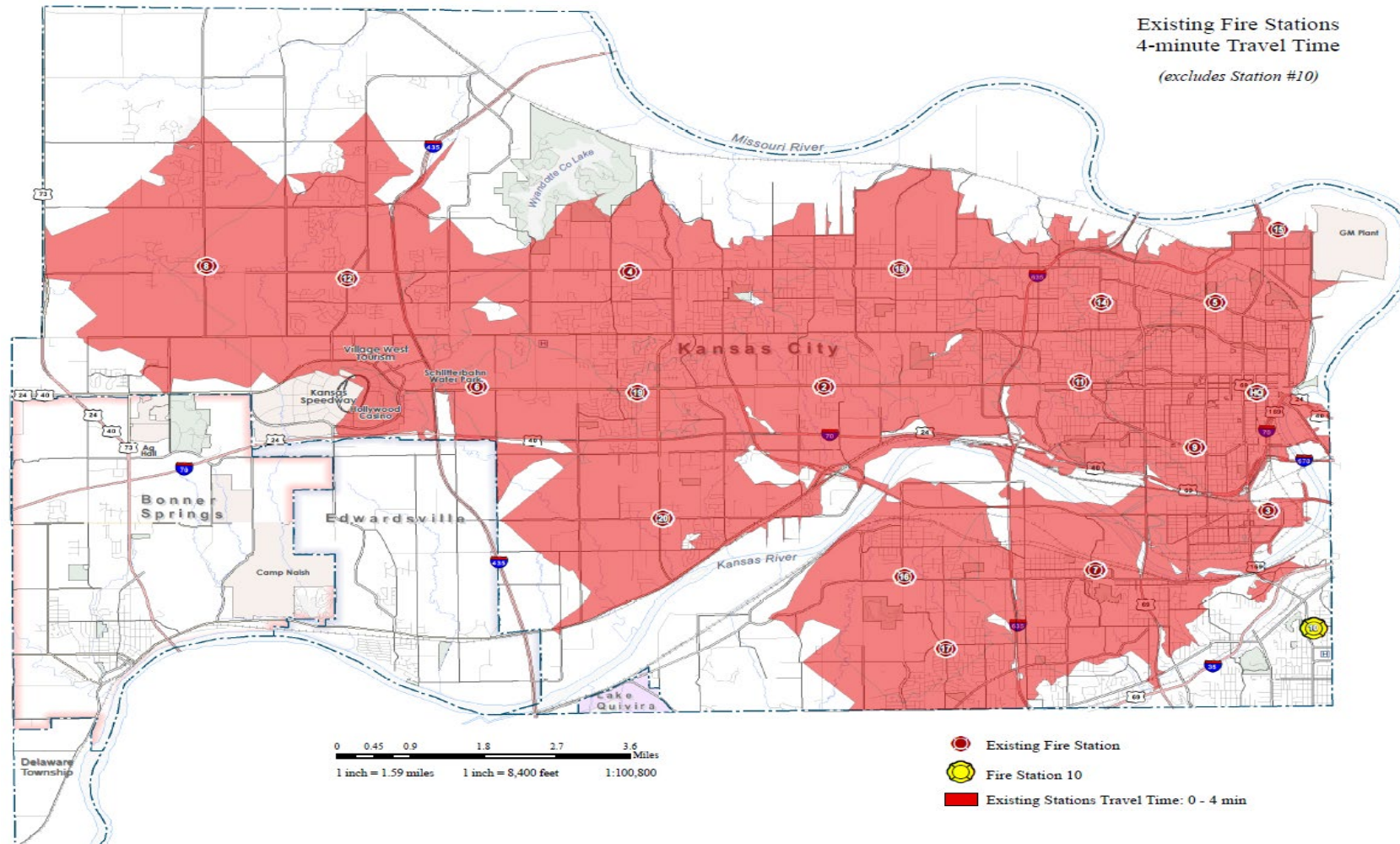


CURRENT 4-MINUTE TRAVEL TIME
PUMPER 10 – NEAR KU MEDICAL CENTER

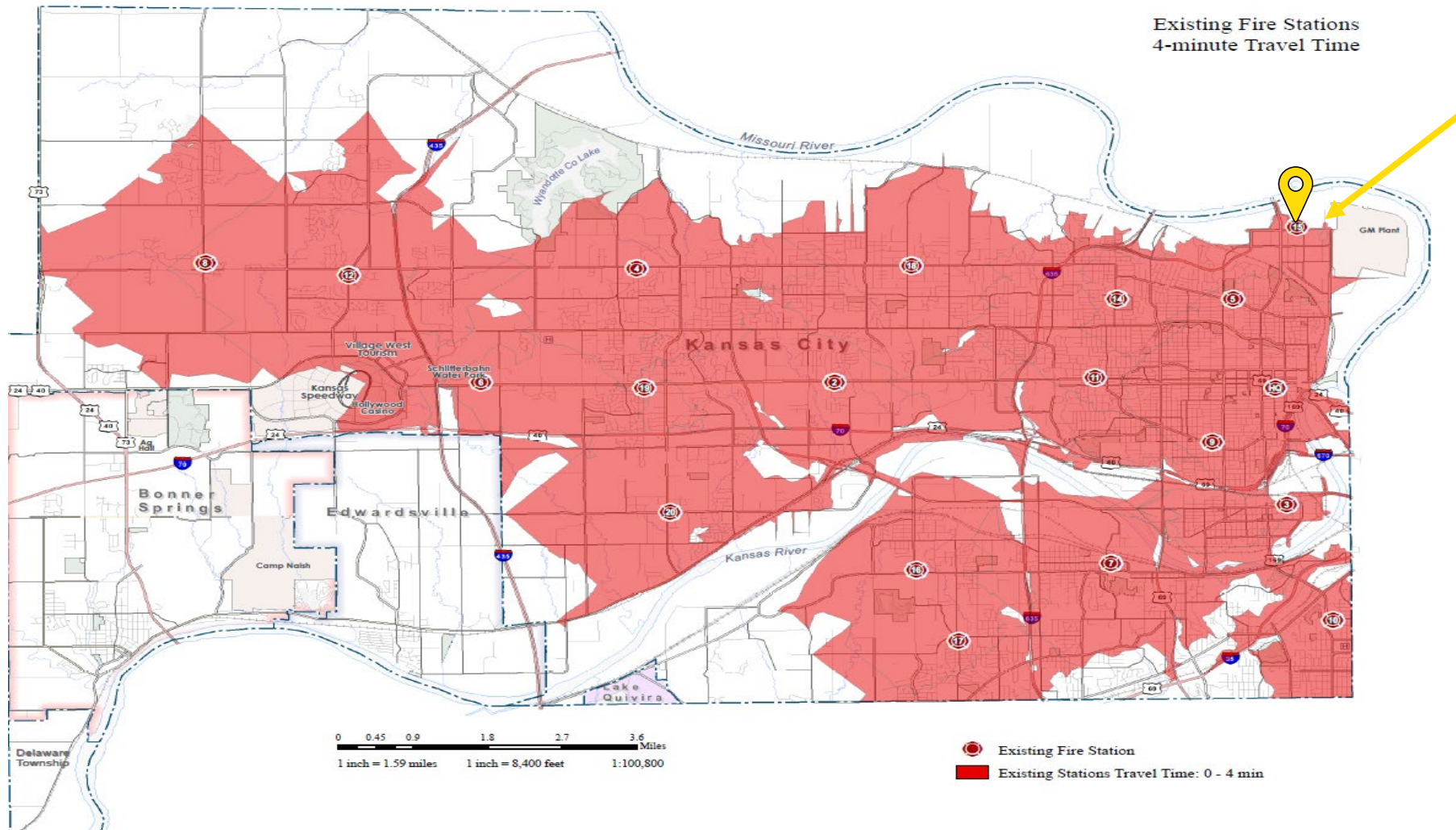


COVERAGE EFFECT OF MOVING PUMPER 10

1,638 RESPONSES IN TERRITORY

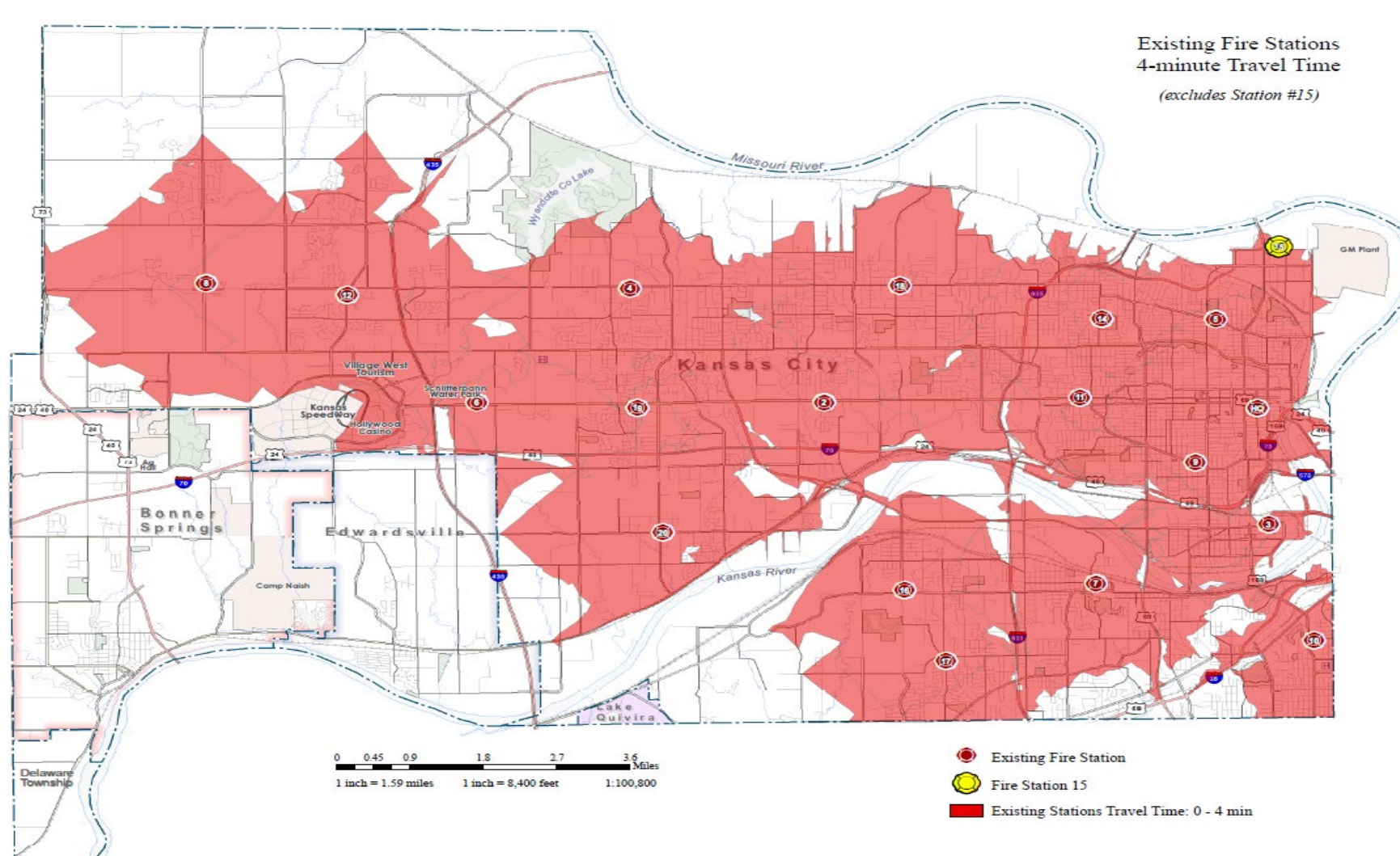


CURRENT 4-MINUTE TRAVEL TIME PUMPER 15 – FAIRFAX INDUSTRIAL



COVERAGE EFFECTS OF MOVING PUMPER 15

286 RESPONSES IN TERRITORY



GIS & ACTIVITY ANALYSIS

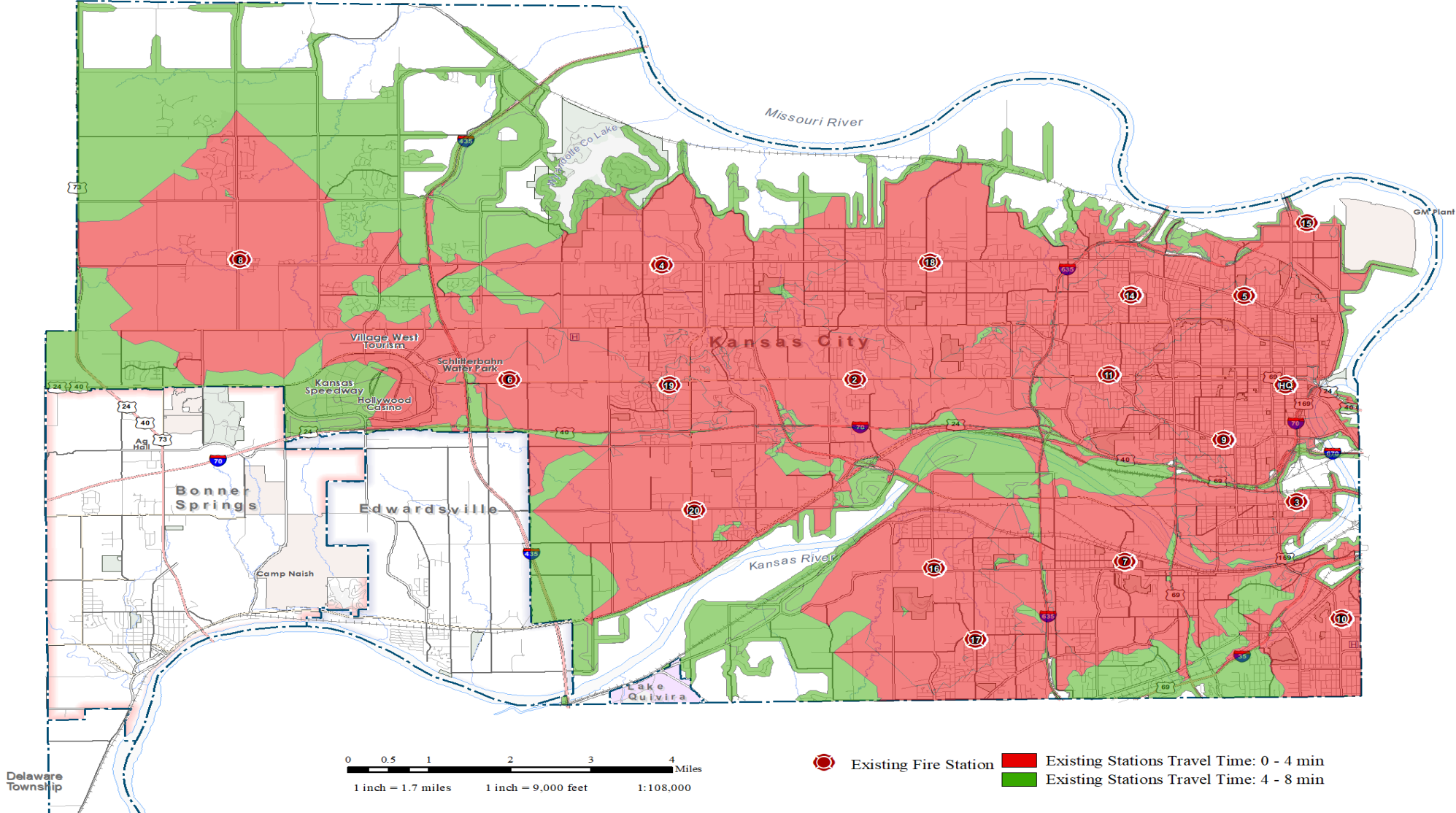
- As the GIS maps show, relocating either Quint 3 (Kansas Ave) or Pumper 10 (KU Med) creates a tactical breach, because another company cannot completely cover the existing AOR of Quint 3 or Pumper 10
- Response analysis reveals that the response territories of Quint 3 and Pumper 10 are 361% and 474% more active than the territory of Pumper 15 (FIA)
- Relocating Pumper 15 does not create a tactical breach because its territory can be covered to NFPA standards by Station 5 (Quindaro)
- Relocating Pumper 15 does not create any tactical breach in the coverage of the existing Area of Response (AOR)

PUMPER 15

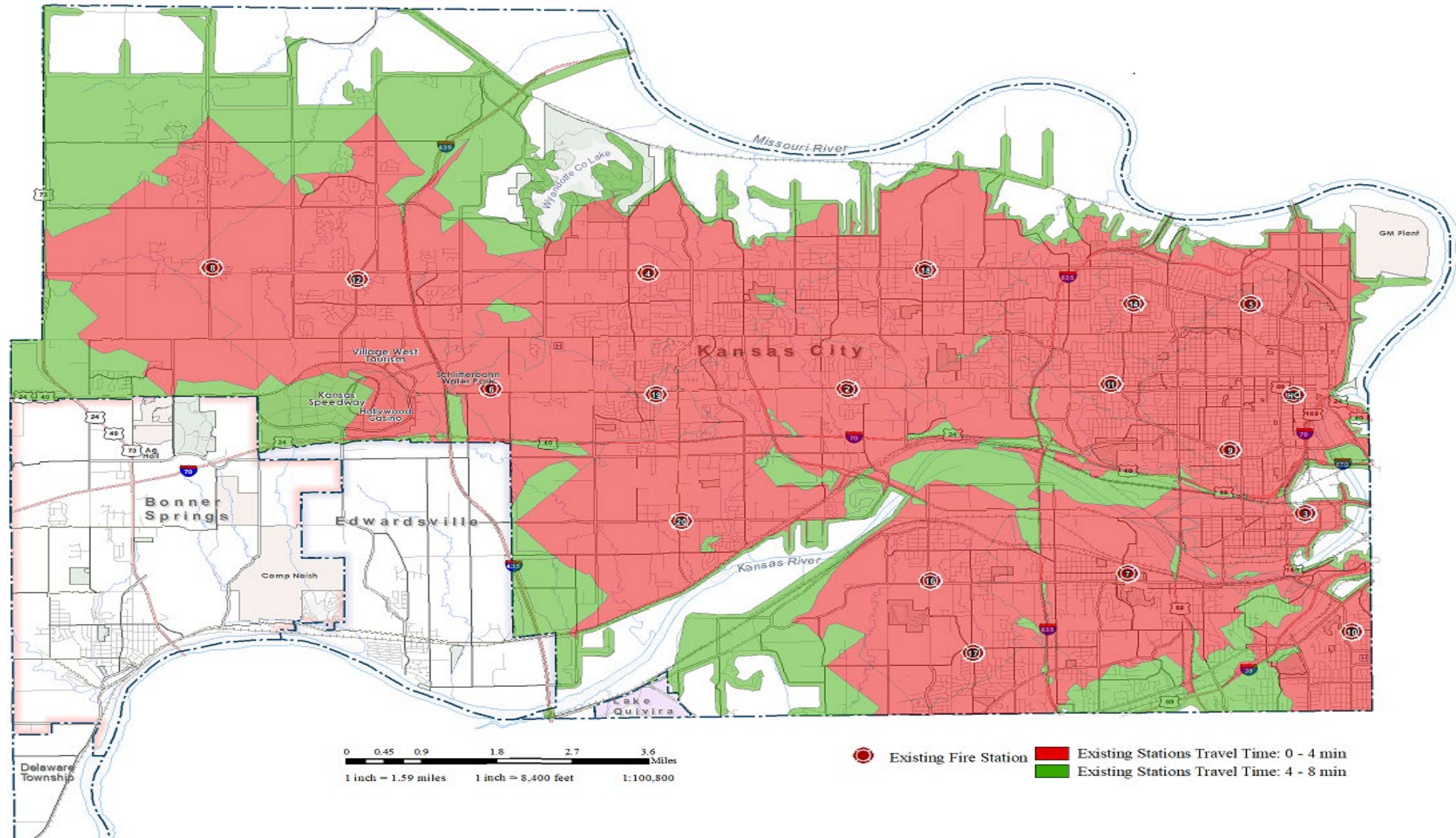
- It is the recommendation of KCKFD to relocate Pumper 15 (FIA) to the new Station 12 (Hutton Road)
- Pumper 15 is the least active fire company in the city
- In 2019, Pumper 15 had 286 total emergency responses in their territory
 - 18 Fire calls
 - 181 EMS calls
 - 6 Haz Mat
 - 81 cancelled / false alarm / service
- This equates to 0.78 emergency responses per day

Pumper 15's current AOR would remain protected, without any reduction of service, within the NFPA 4-minute Standard of Cover (SOC) by Pumper 5 (located at Station 5 on Quindaro Blvd)

RESPONSE MATRIX COVERAGE WITHOUT THE NEW STATION 12



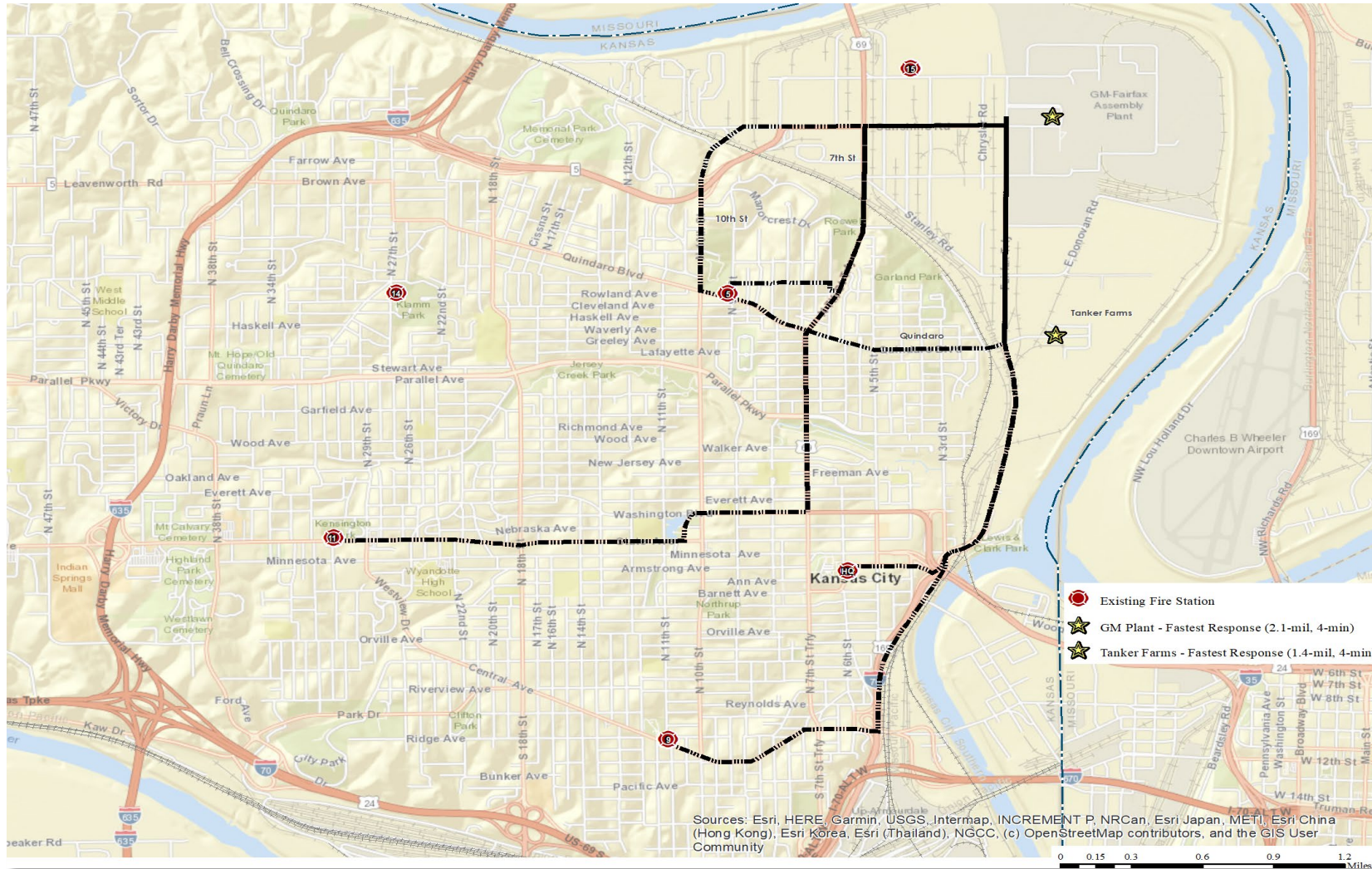
RESPONSE MATRIX COVERAGE WITH THE NEW STATION 12



FAIRFAX INDUSTRIAL AREA COVERAGE

- Same or faster response times
 - Station 5 can access Fairfax from three directions – 10th St, 7th St, Quindaro Blvd
 - Fairfax remains covered by 4 minute response time in accordance with NFPA standards
- Same speed of medical response
 - Fairfax EMS transports will continue be run by EMS 5 (910 Quindaro Blvd) – as they are now
- More “weight” to fire response
 - Enhancing Station 5 (Quindaro) pumper to 4 Firefighters – allowing faster attack on interior structure fires
 - Converting Pumper 9 and Pumper 11 (Fairfax Responding Companies) to 4 Firefighter pumpers – increasing the weight of responding crews
 - KCKFD recently increased number of personnel responding to “General Alarm” fires in Fairfax to 33 – up from previous standard of 25 – with plans increase to 36-37
 - Fairfax Fire calls will be run by P5 (910 Quindaro Blvd), P1 (815 North 6th St), P9 (1100 Central Ave), & P11 (3100 State Ave) and Aerials T1 (815 North 6th St), Q3 (420 Kansas Ave), & T14 (2615 North 27th St)

RESPONSE INTO FAIRFAX FROM STATION 5, FIRE HQ, AND SURROUNDING COMPANIES



NFPA 1710 & OSHA STANDARDS

- The Department is currently seeking authorization to hire 18 new Firefighters
- If authorized, these firefighters would be utilized to convert six (6) of our current 3 Firefighter pumpers, into 4 Firefighter pumpers
- This would allow the Department to conform with the NFPA 1710 Standard for the arrival of a Fire Company within 4 minutes, as well as the contemporaneous standard to place 4 Firefighters on the scene within 4 minutes
- This would also comply with the OSHA regulation of 2 in/2 out at a fire scene

SAFER GRANT

- The Department is making application for the Staffing for Adequate Fire & Emergency Response (SAFER) Grant in furtherance of our efforts to more fully comply with the NFPA 1710 Standard and OSHA 2 in/2 out regulation
- Pending approval, application for the 2020 SAFER Grant, if awarded, would reduce our initial fiscal expenditures for the 18 firefighters in the first three (3) years by 75%, 75%, & 35% respectively
 - Year 1 UG cost = \$258,786.60
 - Year 2 UG cost = \$258,786.60
 - Year 3 UG cost = \$672,845.15
- Total 3 year Initial Cost Savings = \$1,863,263.50

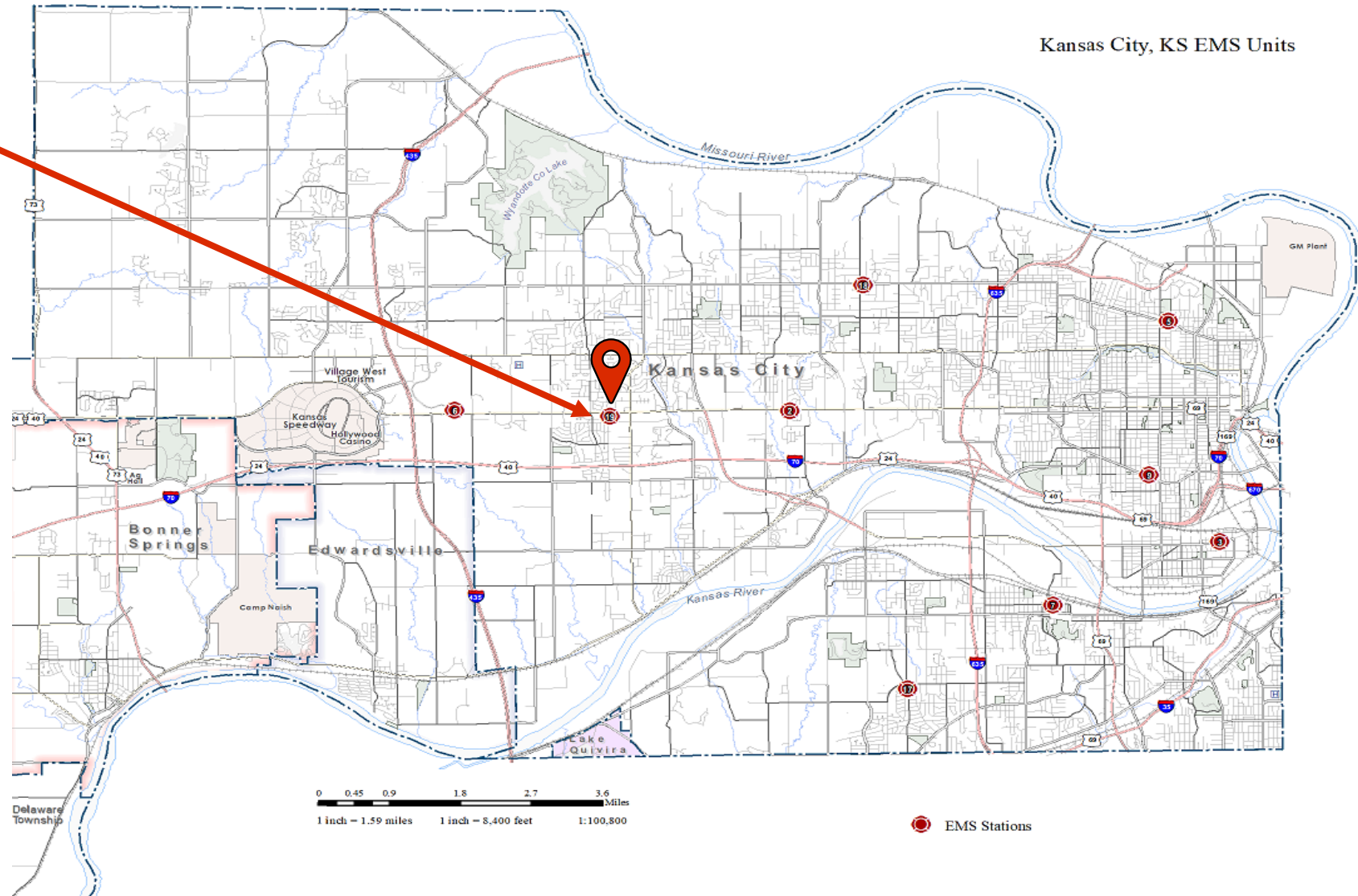
AMBULANCE RELOCATION FOR EXPANDED COVERAGE

ENSURING COMPREHENSIVE EMS RESOURCES ARE AVAILABLE
TO EVERY SEGMENT OF THE CITY




RELOCATION OF EMS 19 TO STATION 12

- It is the recommendation of KCKFD to relocate EMS 19 (1011 North 80th Terrace) to the new Station 12 (Hutton Road)
- The current EMS transport response, provided by EMS 19, will be covered by EMS 6 (9845 State Ave) and EMS 2 (6241 State Ave)
- The current standard of a 9:59 arrival time for an EMS transport unit will be maintained in the areas currently served
- The current standard of a 9:59 arrival time for an EMS transport unit will be expanded into areas that are currently not served
- This will provide more comprehensive EMS transport capability to the west and northwest sides of the city



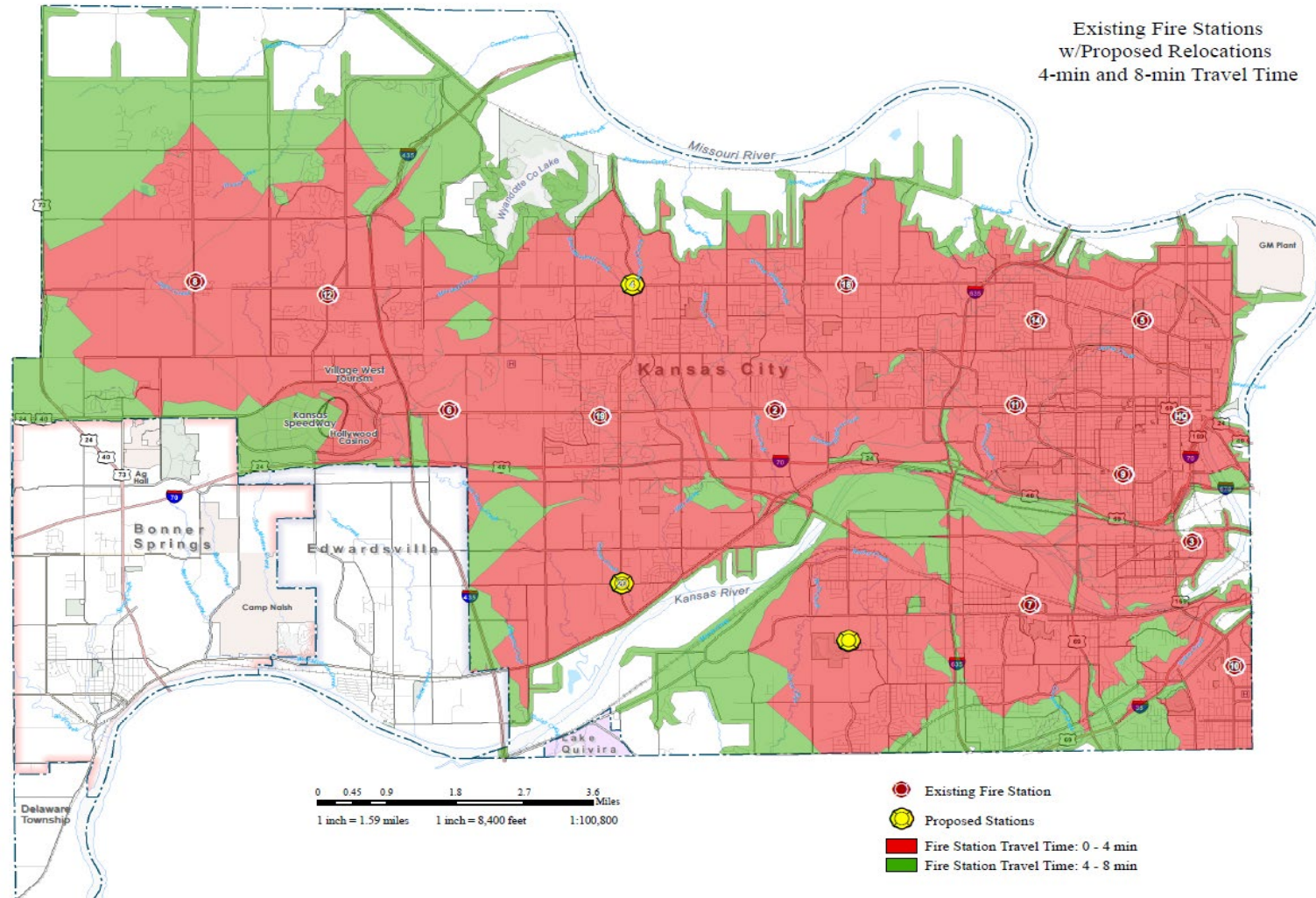
Note:
Excludes Station #19
Includes Station #12

 EMS Stations

This map displays the EMS service area for Kansas City, KS, divided into travel time zones. The zones are color-coded: red for 0-9:59 minutes, orange for 10-14:59 minutes, yellow for 15-19:59 minutes, and light green for 20-24:59 minutes. The map includes major highways (Interstates 70, 49, 24, 40, 67, 55, 48, 20, 165, 160, 169, 163, 161, 164, 162, 166, 167, 168, 169, 170, 171, 172, 173, 174, 175, 176, 177, 178, 179, 180, 181, 182, 183, 184, 185, 186, 187, 188, 189, 190, 191, 192, 193, 194, 195, 196, 197, 198, 199, 200, 201, 202, 203, 204, 205, 206, 207, 208, 209, 210, 211, 212, 213, 214, 215, 216, 217, 218, 219, 220, 221, 222, 223, 224, 225, 226, 227, 228, 229, 230, 231, 232, 233, 234, 235, 236, 237, 238, 239, 240, 241, 242, 243, 244, 245, 246, 247, 248, 249, 250, 251, 252, 253, 254, 255, 256, 257, 258, 259, 260, 261, 262, 263, 264, 265, 266, 267, 268, 269, 270, 271, 272, 273, 274, 275, 276, 277, 278, 279, 280, 281, 282, 283, 284, 285, 286, 287, 288, 289, 290, 291, 292, 293, 294, 295, 296, 297, 298, 299, 300, 301, 302, 303, 304, 305, 306, 307, 308, 309, 310, 311, 312, 313, 314, 315, 316, 317, 318, 319, 320, 321, 322, 323, 324, 325, 326, 327, 328, 329, 330, 331, 332, 333, 334, 335, 336, 337, 338, 339, 340, 341, 342, 343, 344, 345, 346, 347, 348, 349, 350, 351, 352, 353, 354, 355, 356, 357, 358, 359, 360, 361, 362, 363, 364, 365, 366, 367, 368, 369, 370, 371, 372, 373, 374, 375, 376, 377, 378, 379, 380, 381, 382, 383, 384, 385, 386, 387, 388, 389, 390, 391, 392, 393, 394, 395, 396, 397, 398, 399, 400, 401, 402, 403, 404, 405, 406, 407, 408, 409, 410, 411, 412, 413, 414, 415, 416, 417, 418, 419, 420, 421, 422, 423, 424, 425, 426, 427, 428, 429, 430, 431, 432, 433, 434, 435, 436, 437, 438, 439, 440, 441, 442, 443, 444, 445, 446, 447, 448, 449, 450, 451, 452, 453, 454, 455, 456, 457, 458, 459, 460, 461, 462, 463, 464, 465, 466, 467, 468, 469, 470, 471, 472, 473, 474, 475, 476, 477, 478, 479, 480, 481, 482, 483, 484, 485, 486, 487, 488, 489, 490, 491, 492, 493, 494, 495, 496, 497, 498, 499, 500, 501, 502, 503, 504, 505, 506, 507, 508, 509, 510, 511, 512, 513, 514, 515, 516, 517, 518, 519, 520, 521, 522, 523, 524, 525, 526, 527, 528, 529, 530, 531, 532, 533, 534, 535, 536, 537, 538, 539, 540, 541, 542, 543, 544, 545, 546, 547, 548, 549, 550, 551, 552, 553, 554, 555, 556, 557, 558, 559, 560, 561, 562, 563, 564, 565, 566, 567, 568, 569, 570, 571, 572, 573, 574, 575, 576, 577, 578, 579, 580, 581, 582, 583, 584, 585, 586, 587, 588, 589, 590, 591, 592, 593, 594, 595, 596, 597, 598, 599, 600, 601, 602, 603, 604, 605, 606, 607, 608, 609, 610, 611, 612, 613, 614, 615, 616, 617, 618, 619, 620, 621, 622, 623, 624, 625, 626, 627, 628, 629, 630, 631, 632, 633, 634, 635, 636, 637, 638, 639, 640, 641, 642, 643, 644, 645, 646, 647, 648, 649, 650, 651, 652, 653, 654, 655, 656, 657, 658, 659, 660, 661, 662, 663, 664, 665, 666, 667, 668, 669, 670, 671, 672, 673, 674, 675, 676, 677, 678, 679, 680, 681, 682, 683, 684, 685, 686, 687, 688, 689, 690, 691, 692, 693, 694, 695, 696, 697, 698, 699, 700, 701, 702, 703, 704, 705, 706, 707, 708, 709, 710, 711, 712, 713, 714, 715, 716, 717, 718, 719, 720, 721, 722, 723, 724, 725, 726, 727, 728, 729, 730, 731, 732, 733, 734, 735, 736, 737, 738, 739, 740, 741, 742, 743, 744, 745, 746, 747, 748, 749, 750, 751, 752, 753, 754, 755, 756, 757, 758, 759, 760, 761, 762, 763, 764, 765, 766, 767, 768, 769, 770, 771, 772, 773, 774, 775, 776, 777, 778, 779, 780, 781, 782, 783, 784, 785, 786, 787, 788, 789, 790, 791, 792, 793, 794, 795, 796, 797, 798, 799, 800, 801, 802, 803, 804, 805, 806, 807, 808, 809, 810, 811, 812, 813, 814, 815, 816, 817, 818, 819, 820, 821, 822, 823, 824, 825, 826, 827, 828, 829, 830, 831, 832, 833, 834, 835, 836, 837, 838, 839, 840, 841, 842, 843, 844, 845, 846, 847, 848, 849, 850, 851, 852, 853, 854, 855, 856, 857, 858, 859, 860, 861, 862, 863, 864, 865, 866, 867, 868, 869, 870, 871, 872, 873, 874, 875, 876, 877, 878, 879, 880, 881, 882, 883, 884, 885, 886, 887, 888, 889, 890, 891, 892, 893, 894, 895, 896, 897, 898, 899, 900, 901, 902, 903, 904, 905, 906, 907, 908, 909, 910, 911, 912, 913, 914, 915, 916, 917, 918, 919, 920, 921, 922, 923, 924, 925, 926, 927, 928, 929, 930, 931, 932, 933, 934, 935, 936, 937, 938, 939, 940, 941, 942, 943, 944, 945, 946, 947, 948, 949, 9

EMS 2, 6, & 12 COVERAGE SHOWN ON THIS MAP

PROPOSED 4 AND 8-MIN TRAVEL TIME BOUNDARIES UTILIZING THE RECOMMENDED STATION LOCATIONS





KANSAS CITY KANSAS FIRE DEPT



QUESTIONS?

