

WYANDOTTE COUNTY PARKS & RECREATION

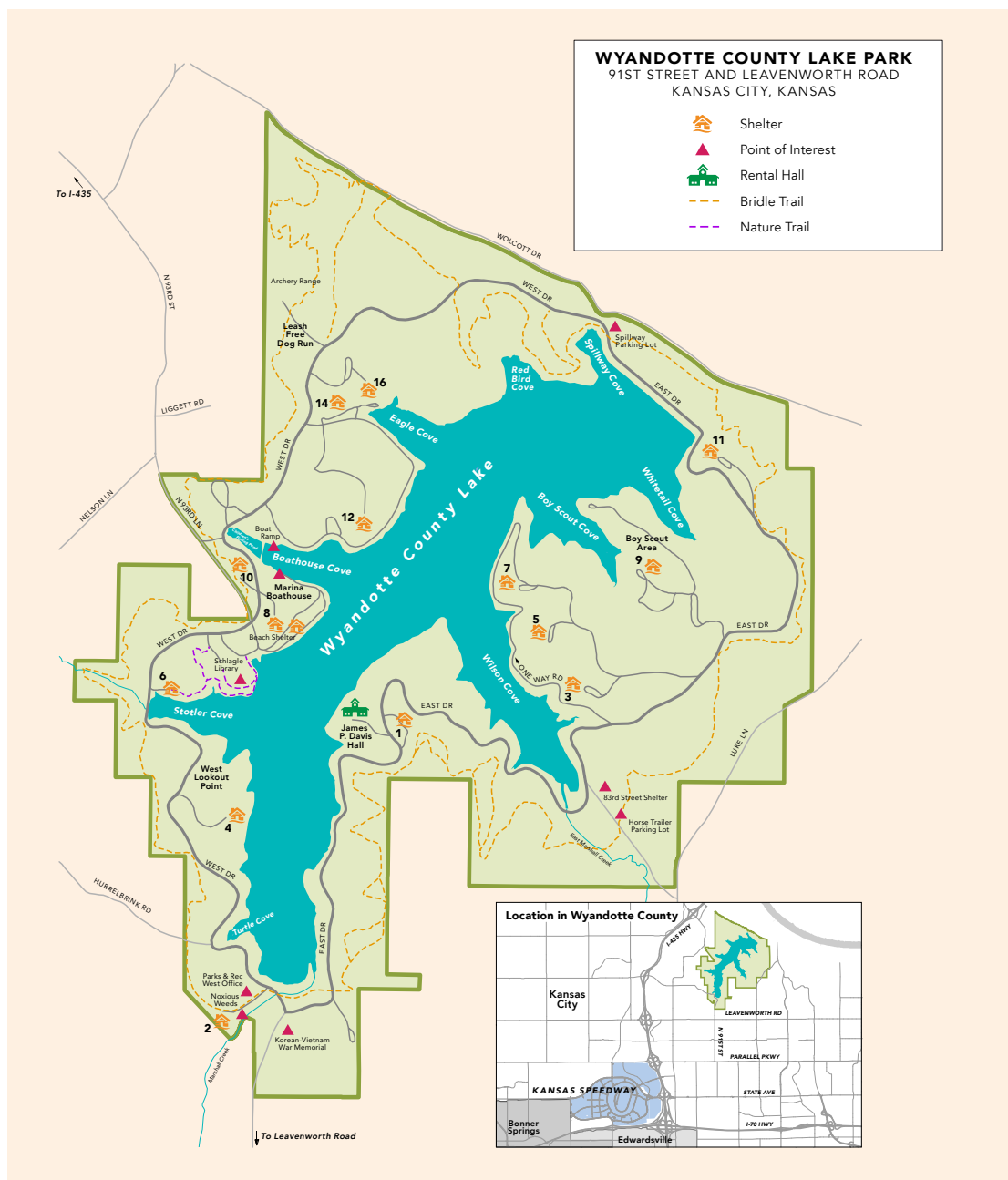
EXPLORE WYCO PARKS.

**2019 SPRING & SUMMER
PARKS & RECREATION GUIDE.**

Find ways to get involved
in your community through
WYCO Parks & Recreation.



WWW.WYCOKCK.COM/PARKSANDREC



Unified Government Board of Commissioners

At-Large District 1

Melissa Bynum

At-Large District 2

Tom Burroughs

District 1

Gayle Townsend

District 2

Brian McKiernan

District 3

Ann Brandau-Murguia

District 4

Harold L. Johnson, Jr.

District 5

Mike Kane

District 6

Angela Markley

District 7

James F. (Jim) Walters

District 8

Dr. Jane Winkler Philbrook

Board of Park Commissioners

Mark Mohler, Chairman
John McTaggart,
First Vice Chairman
Craig Howell,
Second Vice Chairman
Erin Stryka, Secretary
Ty Collins, Member
Jeff Sachen, Member
Patricia Gates, Member
Beatrice Lee, Member
Carolyn Wyatt, Member
Ricardo Saucedo, Member
Robert Scherzer, Member

Wyandotte County Parks Foundation

Winnie Ave
Steve Dominic
Mike Connor
Patricia Gates
David Hurlbrink
Bill Hutton
John McTaggart
Dana Bye
Jennifer Slaughter
Dan Welch

Important Numbers

Shelter & Building Reservations

913-573-8327

Sports

913-573-8330

Golf Course

913-573-8570

Special Events

913-573-8397

Recreation

913-573-8329

The Unified Government of Wyandotte County Kansas City, KS Parks and Recreation Department would like to recognize Professor Brian Merriman and his Graphic Design students at MidAmerica Nazarene University for their creative skills, dedication, and collaboration on the design of this publication. Thank you from the Unified Government of Wyandotte County Kansas City, KS Parks and Recreation Department!

MIDAMERICA
NAZARENE UNIVERSITY

WELCOME TO WYCO PARKS & RECREATION

On behalf of the Unified Government of Wyandotte County/Kansas City, Kansas Parks and Recreation Department, I invite you to explore the attraction and services offered through Parks and Recreation. Whether you're interested in fishing at Wyandotte County Lake, playing a round of golf at Sunflower Hills, renting space for a community meeting or enrolling your kids or yourself in a sports league-we have options for everyone!

It is our mission to provide clean, safe facilities and well maintained green spaces for the public to enjoy and to make available recreation programming for all. We are proud of our strong established partnerships within the community that allow us to provide such a variety of activities. I would encourage you to look through this Fall/Winter Guide and explore the options within your community!

Jeremy Rogers,
Director, Wyandotte County
Parks & Recreation



WWW.WYCOKCK.COM/PARKSANDREC

CONTACT US

Hours	Monday - Friday 8:00AM - 5:00PM
Director	Jeremy Rogers
Email	parksinfo@wycokck.org
Phone	913. 573. 8327
Fax	913. 573. 8328
Locations	5033 State Avenue Kansas City, KS West Office at Wyandotte County Lake 3488 West Drive Kansas City, KS

The Parks & Recreation Department has incredible spaces and events for the whole family to enjoy. Our Department maintains several lakes that can be used for many outdoor activities. For updated information visit www.wycokck.org/parks.

EXPLORE INSIDE

- 4** Community Centers
- 7** Rental Halls
- 8** Shelters
- 9** Fishing & Boating
- 10** Spring/Summer Sports Programs
- 12** Pool Information
- 13** Christmas in July
- 14** Spring/Summer Activities
- 21** Special Events
- 22** Registration Form (English)
- 23** Registration Form (Spanish)
- 24** Special Populations
- 25** Sunflower Hills
- 26** Park Maps
- 28** Helpful Information

COMMUNITY CENTERS



ARMOURDALE COMMUNITY CENTER **730 OSAGE | (913) 551-0408**

Armourdale Community Center has a small kitchen, meeting room and small gym. The capacity for the meeting room is 75 people. The meeting room and gym are available after 3:00PM on Saturdays or after 12:00 PM on Sundays. Rental is by the hour with a minimum of two hours. The center closes at 10:00 PM both days.



BETHANY COMMUNITY CENTER **1120 CENTRAL AVE | 913-551-0400**

Bethany Community Center has a small kitchen, large meeting room and gym. The capacity for the meeting room is 125 people. The meeting room and gym are available after 3:00 PM on Saturdays or after 12:00 PM on Sundays. Rental is by the hour with a minimum of two hours. The center closes at 10:00 PM both days.



EISENHOWER COMMUNITY CENTER **2901 N. 72ND STREET | 913-596-7050**

Eisenhower Community Center has a large kitchen, large meeting room and gym. The capacity for the meeting room is 125 people. The meeting room and gym are available after 3:00 PM on Saturdays or after 12:00 PM on Sundays. Rental is by the hour with a minimum of two hours. The center closes at 10:00 PM both days.



JOE E. AMAYO SR. ARGENTINE COMMUNITY CENTER

2810 METROPOLITAN AVE | 913-261-4382

Joe Amayo Argentine Community Center has a gym that is available after 3:00 PM on Saturdays or after 12:00 PM on Sundays. Rental is by the hour with a minimum of two hours. The center closes at 10:00 PM both days.

Metro Fitness
913-808- 5939
manager@metro24fitness.com

Access through West Doors

24 Hour Weight Room equipment includes:

- Treadmills
- Recumbent Bikes
- Ellipticals
- Stair masters
- Free Weights
- Olympic Bench Press
- Olympic Squat Rack
- Full Body Circuit

Person may purchase memberships at resident or non resident rate. To receive resident rate they must have proof of Kansas City, KS address.

Membership Fee

Kansas City, KS Resident Rate -
19.99 Monthly or \$200 Annually

Non Resident Rate - \$35.00 Monthly or \$360 Annually
Silver Sneaker Accepted

Staff Hours

Monday - Thursday 10 AM - 7 PM
Friday 10 AM - 4 PM
Sat 9 AM - 1 PM



BEATRICE L. LEE COMMUNITY CENTER

1310 N. 10TH STREET | 913-551-0438

Beatrice L. Lee Community Center has a small kitchen, meeting room and gym. The capacity for the meeting room is 50 people. The meeting room and gym are available after 5:00 PM on Saturdays or after 12:00 PM on Sundays. Rental is by the hour with a minimum of two hours. The center closes at 10:00 PM both days.



PATRICIA "DIANE" KANE COMMUNITY CENTER

3130 N. 122ND STREET | 913-721-5193

Kane Community Center has a large kitchen, large meeting room and gym. The meeting room currently seats 100 people. The meeting room and gym are available after 3:00 PM on Saturdays or after 12:00 PM on Sundays. Rental is by the hour with a minimum of two hours. The center closes at 10:00 PM both days.



KENSINGTON GYM

2900 STATE AVE | 913-551-0407

Kensington Gym is available after 3:00PM on Saturdays or after 12:00 PM on Sundays. Rental is by the hour with a minimum of two hours. The center closes at 10:00 PM both days.

MORE INFORMATION

For more updated information on weekly activities at our community centers pick up a copy of our monthly newsletter, The Buzz. The newsletter contains information on special activities in all of our community centers and parks. It also highlights the weekly activities of each center. You can pick up your copy at your local community center, library, online at www.wycokck.org/parks or the Parks and Recreation office at 5033 State Ave., or the Lake Office, 3488 West Drive Kansas City, KS 66109.

We're looking for new and exciting classes for all of our community centers. If you are interested in teaching a class at any of our community centers please contact the center directly or Shelly Burnett at 913-573-8329.

How to Reserve a Center

Reservations for community centers can be made in person at the Administration Office, 5033 State Ave. in the Fleet Services Building (next to the Dental Office), or the Lake Office, 3488 West Drive Kansas City, KS 66109. Office hours are 8:00 am to 5:00 pm, Mon. – Fri. The community rooms are available for rent after 3:00 pm on Saturdays or after 12:00 noon on Sundays. Rental is by the hour with a minimum of two hours. The centers close at 10:00 pm both days. Alcohol and smoking are not allowed. For more information or to check on availability, call 913-573-8329.

Learn more about us at www.wycokck.org/parks

RENTAL HALLS



JAMES P. DAVIS HALL **WYANDOTTE COUNTY LAKE PARK** **91st and LEAVENWORTH RD.**

Davis Hall is located at Wyandotte County Lake, 91st and Leavenworth Road. The hall has a large kitchen, a dining room and a dance or meeting room. The capacity for this building is 150 people. It also has patio overlooking the lake where many weddings have been held. Davis Hall is a lodge style building constructed in the late 1930s from native stone and timber. It is one of the most unique wedding locations in the metropolitan area.



GEORGE MEYN **126th and STATE AVE.**

The George Meyn Building, 126th & State Ave., is located in Wyandotte County Park. This building has a large dining hall, kitchen, full size stage, beer room, coat room and a large foyer. Capacity is 350 people. A playground is adjacent to the Meyn Building; a skate park and tennis courts are within walking distance. Sunflower Hills Golf Course and the Junior Golf Course are also adjacent to the building.



PIERSON COMMUNITY CENTER **1800 S. 55th**

Pierson Community Center, 1800 South 55th, is located in Pierson Park. This is the largest facility in the park system with a large dining room, a huge kitchen, a large bar room and a coat room. Capacity is 500 people. Pierson Park also offers fishing, skate park, spray park, playground, tennis courts and three picnic shelters.

HOW TO RESERVE A HALL

The reservation halls are suitable for wedding receptions, family reunions and business meetings. Smoking is prohibited inside of the facilities. Alcohol is allowed for certain reservations and security is required. Reservations are accepted up to one year

in advance. Reservations are only accepted in person and the fee and deposit are both due at that time. For more information on renting a hall please call 913-573-8327.

SHELTERS



SEASONAL SHELTER AMENITIES

Park	Restroom	Water	Electricity
Alvey Park	Yes	N/A	N/A
Big Eleven Lake	P	N/A	Yes
City Park North	P	N/A	N/A
City Park Pavillion	Yes	Yes	Yes
City Park Regan	Yes	Yes*	N/A
Eisenhower Park	Yes	Yes*	N/A
Emerson Park	P	Yes	Yes
Huron Park	N/A	N/A	Yes
Kaw Point Park	Yes	Yes	Yes
Klamm Park	Yes	Yes*	Yes
Matney Park	P	N/A	N/A
Parkwood Park	Yes	Yes	Yes
Pierson Park	Yes	Yes	Yes
Quindaro Park North	N/A	N/A	N/A
Quindaro Park South	Yes	Yes*	N/A
Rosedale Park	Yes	Yes*	Yes
Shawnee Park East	N/A	N/A	N/A
Shawnee Park West	Yes	Yes	N/A
St. Margret's Park	N/A	N/A	N/A
Thomson Park	P	Yes	N/A
Welborn Park	P	N/A	Yes
WYCO Lake Park	Yes	Yes	Yes
WYCO Park	Yes	Yes	Yes

P – Portable Restroom

*- Running Water in Restroom Only

N/A – Not Available

HOW TO RESERVE

A shelter is an open-air structure with a roof and picnic tables under the roof. The shelters at Wyandotte County Lake, Pierson Park and Wyandotte County Park (Bonner, 126th and State Ave, all have grills to cook on, restrooms and playground equipment. A complete list of shelters, their location and amenities is available on our web site at www.wycokck.org/parks.

Shelter reservations start on January 2, 2019 and will be accepted at the Parks and Recreation Office at 5033 State Ave. KCK 66102.

On January 3, 2019 shelter reservations will be accepted at both Parks and Recreation Office's, 5033 State Ave. and 3488 West Dr. KCK 66109. Office hours are 8am – 5pm, Mon. – Fri. For more information or to check availability, call 913-573-8327.

FISHING & BOATING



Season begins the 1st Saturday in March through November 30

Fishing Rules and Regulations:

1. Fishing at Wyandotte County Lake 6:00 a.m. to 11:30 p.m. Fishermen must have vacated the parks by midnight.
2. Residents ages 16-64 must have a Unified Government fishing permit in their possession in addition to their Kansas State fishing license to fish at Wyandotte County Lake.
3. All non-Kansas residents 16 years of age and over must have a permit.
4. Each angler is limited to 2 lines with no more than 2 baited hooks or artificial lures per line.
5. Administration reserves the right to prohibit any or all fishing and boating at any time.
6. Each angler must keep his/her fish on a separate individual stringer or suitable container, so Sheriff Department can easily identify possession and creel limits.
7. Trot lines, bank lines, jug lines, netting or seining of fish is not permitted.
8. Anglers may fish the entire lake except where posted. No bank fishing in the boathouse cove.
9. Anglers must abide by State Rules and Regulations.
10. No open season on frogs, snakes or turtles.

Boating Rules and Regulations:

1. Boating at Wyandotte County Lake is permitted from 6:00 a.m. to 11:30 p.m. Boaters must be off the lake by 11:30 p.m. so the park can close by midnight.
2. Water vessels are permitted on Wyandotte County Lake only. All vessels must have permits and they be displayed on the right rear transom of the vessel.
3. Proper lighting must be displayed on the vessel from sunset to sunrise.
4. All children 12 and under must wear Coast Guard approved life preservers while on the vessel. Life preservers must be visible and easily accessible for all passengers on the vessel.
5. No reckless operation of a vessel will be tolerated.
6. No wake in coves.
7. 20 mph Speed Limit throughout the lake.
8. No personal watercraft, tubing or water-skiing.
9. No one will operate a vessel while intoxicated or under the influence of drugs.
10. Sailboards and Kayaks are permitted. Preservers and permits are required for both.
11. No vessel may fish from or tie up to any pontoon dock. Slip owners are excluded, but they must be on their boat and in their own slip. No fishing from the docks.
12. Vessels will be respectful and courteous to bank anglers.
13. Misconduct or violation of rules and regulations will result in fines and loss of boating privileges.
14. Administration reserves the right to prohibit any or all fishing and boating at any time.
15. Swimming from boats is allowed. Ask for rules and regulations.



SPRING/SUMMER SPORTS

MEN'S SOCCER

The Men's Soccer league will be starting on April 7th regular games will be on Thursdays and Sundays at Wyandotte Sporting Fields, City Park, and Leo Alvey. The fee will be \$1500.00 a team plus \$20.00 player fee.

YOUTH SOCCER

The youth soccer league will be starting April 6th for grades K-12. The fee is \$15.00 a youth. The games will be played at Leo Alvey and Wyandotte Sporting Fields. This will be (6) weeks and Tournaments.

PITCH, HIT & RUN

Parks and Recreation will be having its annual Pitch, Hit, & Run competition at Klammer Park on April 13th from 10:00am to 12noon for baseball and softball players, this will be a free event.

PICKLE BALL

Starting in April Pickle Ball will be at Patricia Kane Community Center on Saturday mornings, Players must call to reserve courts.

MEN'S FAST PITCH SOFTBALL

On May 7th Men's Fast Pitch Softball will start at Nally's Field, Games will be play on Tuesdays and Thursdays nights from 6:30pm to 10:30pm. The deadline is April 26th. Fee \$425.00 a team for 10 games.

T-BALL

The T-ball league will be starting May 4th for grades Pre-K – 2nd grade. The fee is \$15.00 a youth. The games will be played at Klammer Park and Shawnee Park. This league will be six weeks long and played on Saturday mornings.



SPRING/SUMMER SPORTS



COED SOFTBALL

Games will be played at WYCO Park

***Spring Co-ed Softball league** will start April 7th. This will be a double header league with, games on Sundays. The deadline is March 29th. Fee \$325.00

***Summer Co-ed Softball league** will start June 9th. This will be a double header league with, games on Mondays and Wednesdays. The deadline is June 4th. Fee \$325.00

***Fall Co-ed Softball league** will start Sept. 8th. This will be a double header league with, games on Sundays at City Park. The deadline is August 26th. Fee \$325.00



YOUTH BASEBALL

Machine Pitch will be offered this spring starting May 4th. The fee is \$15.00 for 8 games and end of the season tournament. All games will be on Saturdays. The ages are (7-9). Machine Pitch will be played at Klamm Park. All games will be Thursdays and Saturdays.

MEN'S SOFTBALL

Games will be played at Klamm and Regan Parks

***Spring Men's Softball league** will start April 3rd. This will be a double header league with games on Mondays and Wednesdays. The deadline is March 25th. Fee \$325.00

***Summer Men's Softball league** will start June 12th. This will be a double header league with games on Mondays and Wednesdays. The deadline is June 3rd. Fee \$325.00

***Fall ball Men's Softball league** will start August 28th. This will be a double header league with games on Wednesdays, games will be played City Park. The deadline is August 19th. Fee \$325.00



POOL INFORMATION



PARKWOOD POOL

SEASON OPENING Saturday May 25

Pool Hours:

Tuesday through Saturday, Noon – 8 pm

Sunday, 2 – 8 pm

For information call 913-551-0402

Daily admission is \$1.00, swimsuits required.

SPRAY PARKS

Children of all ages and abilities can enjoy sprays of water from brightly colored towers, loops and hoops with activators that are low enough for all to reach. Zero depth entry allows for handicap accessibility. Spray parks are free and open from Memorial Day weekend to Labor Day 9:00 am to 9:00 pm daily.

Locations

Eisenhower Park, 2901 North 72nd Street (behind Eisenhower Middle School)

Pierson Park, 1800 South 55th

Heathwood Park, Parallel Parkway and North 10th Street



CHRISTMAS IN JULY

6th Annual CHRISTMAS IN JULY

Wyandotte County Lake Marina

FOOD MUSIC PRIZES FIREWORKS FUN



JULY 20, 2019

Join us in celebrating the unofficial holiday "Christmas in July!" Activities for the whole family as well as a pontoon boat parade in the evening! Decorate your pontoon in Christmas theme to win!

Register at the Lake Marina, Parks and Recreation office
located at 5033 State Avenue or
3488 West Drive or call 913-573-8327 for more information.

5PM-6PM FISHING DERBY 6PM-8PM BOAT JUDGING 8:30PM PARADE STARTS WITH FIREWORKS TO FOLLOW



Follow us on Facebook
<https://www.facebook.com/WYCOParksandRec>

SPRING AND SUMMER ACTIVITIES



ACTIVSTARS CHEERLEADING

Open to Boys and Girls ages 4-15
www.mw.activstars.com to register online.
Call 816.994.2644 for more information.

\$10 registration fee, \$8 per week for 45 minute class/practice, payable at site. Enroll on line or at class/practice site. Parents and friends are welcome to watch the first class/practice. New students will be accepted up to the third week. This is a continuing program each semester. Students may advance to all levels. Cheer- Poms with ID tags (\$27) will be available or you can bring your own.

Cheerleading

- Cheers, Chants, Jumps and Stunting
- Cheer Dance Routines, Fun Team Building
- Clinics, Showcases and Competitions – Up to Nationals

Location: Beatrice Lee Community Center
Day/Time: Wednesday 6:00 pm, 6/5 to 8/7.



MARTIAL ARTS

Open to Boys and Girls ages 4-15
www.mw.activstars.com to register online.
Call 816.994.2644 for more information.

\$10 registration fee, \$8 per week for 45-minute class/practice, payable at site. Enroll on line or at class/practice site. Parents and friends are welcome to watch the first class/practice. New students will be accepted up to the third week. This is a continuing program each semester. Students may advance to all levels. Karate- Gi uniforms (433) will be available but not required.

Self Defense/Karate-Martial Arts

- Essential Life Skills – Respect and Discipline
- Safety Awareness, Abduction Prevention, and Anti Bullying
- Advancement through Black Belt with Certified Black Belt Instructors

Locations: George Meyn & Pierson Community Centers
Day/Time: Mondays 5:30 pm, 6/3 to 8/5.

SPRING AND SUMMER ACTIVITIES



JC KARATE

Open to Boys and Girls ages 6 – adults

\$40.00/month. This class offers the participant a complete Martial Arts program without the high cost associated with a commercial studio. The student will learn practical self-defense skills. Registration is ongoing.

Location: Armourdale Community Center

Day/Time: Monday & Thursday 6:00 pm

YOGA

Free class. Yoga does more than burn calories and tone muscles. It's a total mind-body workout that combines strengthening and stretching poses with deep breathing and meditation or relaxation. It can help you relax and focus while gaining flexibility and strength. Yoga can also boost your mood.

Location: Joe Amayo/Argentine Community Center

Day/Time: Tuesday 10:30 am

Saturday 9:00 am

Instructor: Mary Butler

Location: Eisenhower Community Center

Day/Time: Monday 10:30 am

Thursday 10:00 am

Instructor: Mary Butler



MEXICAN REGIONAL FOLKLORIC DANCE

\$10 per month. Mexican dance is often a way to celebrate, whether it is a birth, a death, a religious observance, or folklore; these dances are a way to celebrate life and express your feelings. Learn the basic steps and movements for folk dance of Mexico.

Location: Joe Amayo/Argentine Community Center

Day/Time: Tuesday & Thursday 6:00 pm

Instructor: Theresa Perez

YOUTH SPORT CLINIC

Free clinic for children to learn the fundamentals of sports. Currently focusing on basketball and futsal.

Location: Joe Amayo/Argentine Community Center

Day/Time: Wednesday 5:00 pm

SPRING AND SUMMER ACTIVITIES



ZUMBA

Zumba is an aerobic-dance program featuring a variety of rhythms from all over Latin America. Merengue, Salsa, Flamenco, Samba, Tango, Reggae, and more! Zumba is fun, and it's a great cardiovascular exercise with moderate impact. This class is ongoing. Cost is only \$1.00 if not a Metro 24 member. All classes are one hour.

Zumba Gold	M W F	8:30 am
Zumba Strong	M	9:30 am
Zumba Step	M	5:00 pm
Zumba	M W	6:30 pm
Zumba Strong	M	6:30 pm
Insanity	W	6:30 pm
Boot Camp	M	7:30 pm
Zumba Strong	Tu Th	6:00 pm

Location: Joe Amayo/Argentine Community Center



GIRL SCOUTS

Bring the girls to a free meeting. Girls scouts builds confidence, your girl will prepare for a lifetime of leadership, success, and adventure in a safe, no-limits place designed for and by girls!

Location: Joe Amayo/Argentine Community Center
Day/Time: Wednesday 5:00 pm

KICKBOXING

Kickboxing provides you with a full body workout that is guaranteed to get your heart pumping and those calories burning.

Location: Joe Amayo/Argentine Community Center
Day/Time: Wednesday & Friday 9:30 am

URBAN ART

Free class. We empower kids to collaborate and express themselves through art, music, dance and theatrics, while building character, confidence, respect for others and the community.

Location: Beatrice Lee Community Center
Day/Time: Wednesday 5:00 pm
Instructor: Karen Daniels

SPRING AND SUMMER ACTIVITIES



KC 2 STEP

Students learn basic counts and advanced movements in the Kansas City 2 Step style of dance. Dance is presented as an art form and exercise. This class is on-going. We will not meet on holiday Mondays.

Location: Eisenhower Community Center

Day/Time: Monday 7:00 pm

Cost: \$5.00/class

Instructor: Steppers of KC

DYNAMIC DIVAS

\$50 per month. Learn different types of dance, along with personal development. We will concentrate on jazz, hip hop and majorette.

Location: Kane Community Center

Day/Time: Saturday 10:30 am & Tuesday 6:00 pm

Cost: \$50/month

Instructor: Jalisa Green



ADULT CERAMICS

\$30/6 week session. This class is for beginners or advanced ceramist. Learn the proper technique of cleaning greenware and painting bisque. Supplies can be purchased from the instructor.

Location: Eisenhower Community Center

Day/Time: Wednesday June 5 9:00 am

Cost: \$30

Instructor: Pat Wells

MENTORING FOR TEENAGERS

Free Class. Adopting a faith to live by. Tutoring for goal setting, role model, career planning, planning for Presidential classroom, and teens as role models.

Location: Eisenhower Community Center

Day/Time: Tuesday September 11 7:00 pm

Instructor: Bessie Robinson

SPRING AND SUMMER ACTIVITIES



BRIDGE CLUB

Free class. We are looking for a few bridge players, so come alone or bring a friend. This club meets weekly, weather permitting. Contact the community center if you are planning to attend. 913-596-7050.

Location: Eisenhower Community Center

Day/Time: Wednesday & Thursday 12:00 pm

QUILTING CLUB

Free class. We are not the boring quilting group your mothers belonged too. We work on many projects. We provide space for all to spread out and complete their projects while providing fellowship. You might even discover new projects. This class meets weekly, weather permitting. Please contact the center for additional information.

Location: Eisenhower Community Center

Day/Time: Tuesday 9:00 am



LEAVENWORTH ROAD ASSOCIATION

We meet the 2nd Tuesday of each month. We share a potluck dinner before the meeting. Food + Friends + Fun + Information = Leavenworth Road Association. For additional information please contact LRA @ 913 788 3988.

Location: Eisenhower Community Center

Day/Time: 2nd Tuesday Potluck 6:00 pm, Meeting 7:00 pm

WACKY WEDNESDAYS

Have nothing to do after school on early out Wednesdays. Bring a friend and play a variety of table/board games, some old and some new. Ages 5-14. Sign up on Wednesday April 3. Free.

Location: Joe Amayo/Argentine Community Center

Day/Time: Wednesday 2:15 – 4:30 pm, April 10 – May 29

SPRING AND SUMMER ACTIVITIES



SPACE, THE NEXT FRONTIER

This is a collaboration with the South Branch Library. Program is for grades K-5th and will have the opportunity to select books of their interest to read at the center and complete a fun craft each week. Our summer theme will be "Space". Pre-registration is required, contact Pam Smith @ 913-261-4382. Free 4-week program.

Location: Joe Amayo/Argentine Community Center

Day/Time: Tuesday 2:00 pm, June 11, June 25, July 9 and July 23

FAMILY FUN NIGHT

Come join us at the center for family fun. We will be offering a variety of family activities that both parents and children would enjoy. This is an opportunity for the family to spend time together through fitness and fun and games. Must have adult supervision for children to attend. Contact Pam Smith for more info @ 913-261-4382. This group will meet the 3rd Friday of the month.

Location: Joe Amayo/Argentine Community Center

Day/Time: Friday 6:30 pm, Begins on July 19

A LEAGUE OF THEIR OWN

Calling all girls! This is a 4-week basketball league for girls only, grades 4-8th. Registration begins on April 15, 2019, and deadline will be May 6, 2019. Cost is \$10/participant. Come hoop it up with us.

Location: Joe Amayo/Argentine Community Center

Day/Time: Thursday 6:00 pm, June 6



COMPASSIONATE FRIENDS

Compassionate Friends is a support group for grieving family who have lost a child. Whether your family has had a child die (at any age, from any cause) or you are trying to help those who have gone through this life altering experience, The Compassionate Friends exists to provide friendship, understanding, and hope to those going through the natural grieving process.

Location **Eisenhower Community Center**

Day/Time **1st Tuesday of every month**

SPRING AND SUMMER ACTIVITIES



OPEN GYM/FREE PLAY BASKETBALL

Want to enjoy a pick-up game with your friends? Our community centers have time in the gym that is open to the public. Times are subject to change due to seasonal events and activities. No school age youth allowed in the gym prior to school dismissal.

Locations

Day/Time

Bea Lee Community Center	M Tu W Th	3-5 pm
Bethany Community Center	M Tu W Th	2-5:30 pm
Joe Amayo/Argentine Community Center	M F (6-12 Grades)	3-5 pm
	W (6-12 Grades)	12:30-2:30 pm
	Tu Th (K-5th Grades)	3:30-5 pm
Kane Community Center	M-F	4:30 – 5:30 pm

MORNING WALKING

Need a place to walk where you don't have to worry about animals or uneven surfaces? Come join us for our morning walks. The gym is open to those wanting to improve their health by walking. 18 laps equal one mile. Proper shoes, tennis or sport shoes, no boots. Time maybe adjusted due to scheduled classes on availability.

Location Day/Time

Joe Amayo/Argentine Community Center
M-F 7:30-9:30 am

GIRLS ON THE RUN

Girls on the Run is for every girl! You don't have to be a runner or star athlete to enjoy this program. You just must be your unique self, and join us for 10 weeks of fitness, friendship and fun!

Location Day/Time

Kane Community Center
M W 5:45-7:30 pm



SPECIAL EVENTS



MOVIES IN THE PARK

Friday, June 7, 2019 8:45pm-until

Friday, July 12, 2019 8:45pm-until

Friday, August 9, 2019 8:45pm-until

Movies In the Park is a FREE family-friendly activity. The Movie will begin at dusk. Moviegoers are encouraged to make an evening of it and bring a picnic, lawn chairs and blankets. Popcorn will be available free-of-charge. Movies TBA on at Wyandotte County Parks and Recreation Facebook page.

YOGA IN THE PARK

Saturday, August 27, 2019 10:30am-11:30am **(Mary Butler)**

Saturday, June 22, 2019 10:30am-11:30am

Saturday, July 27, 2019 10:30am-11:30am

Saturday, August 24, 2019 10:30am-11:30am

Unwind at Yoga in the park. Yoga in the Park is a free relaxing gathering that takes place on the lawn of the Emerson Park. This is a FREE event, open to the public.

YOUTH REGISTRATION FORM

IMPORTANT PLEASE READ

- 1 Registration is on first come, first served basis. All fees are due at the time of registration.
No program confirmations are sent.
- 2 The fee must be paid before the child can play.
- 3 The league supervisor or coach will contact participants with team assignments and practice schedules.
- 4 Please do not come for practice until you have been contacted.
- 5 No refunds after practices have started.
- 6 Fees are nonrefundable.

Please complete the application and return with full payment to: Parks and Recreation, 5033 State Ave. Kansas City, KS 66102. Questions call 913. 573.8330 or go to www.wycokck.org/parks.

One participant per form - forms can be copied.

Date: _____ School Name: _____

Name: _____ Male Female DOB: _____ Age/Grade: _____

Address: _____ City: _____ ST: _____ Zip: _____

Child's Home Phone: _____ Closest Community Center: _____

Parent/Gaurdian Name: _____ Email: _____ Phone: _____

Payment Information: Cash ☐ Money Order ☐ Check ☐ Credit Card ☐ Total Payment: \$ _____

I would like to register for: Bitty Ball ☐ Basketball ☐ Kickball ☐ Soccer ☐
T-Ball ☐ Softball ☐ Flag Football ☐ Dodgeball ☐

Willing to Volunter: Coach ☐ Asst. Coach ☐

Have you participated in any other recreational activities this year? Yes ☐ No ☐

The undersigned states that he/she understands that the Unified Government of Wyandotte County/Kansas City, KS Parks and Recreations not and shall not be responsible for or liable for any illness, or injury to person or damage to property resulting from the program in which the undersigned is enrolling or being enrolled of from his/her participation in said program in which the participant and undersigned, if the participant is a minor or under other legal disability, hereby forever releases and holds harmless the said U.G. or Wy. Co./KCKS Parks and Recreation its employees agents and executors, administrators, or assign may have or claim to have resulting form participation in said program. Also, the undersigned and the participant authorize the U.G. or Wy. Co./KCKS Parks and Recreation to use at its discretion any photograph(s) (black/white or color) taken of participant while participating in the program and waive any and all claims that the participant and undersigned or their heirs, executors, administrators, or assigns may have or claim to have resulting from such photograph(s) or reproductions thereof.

***I have read and understand the waiver statement, the registration and cancelation policies. Registration invalid without signature.**

X _____

YOUTH REGISTRATION FORM (IN SPANISH)

IMPORTANT PLEASE READ

- 1 La inscripción es por orden de llegada. Todas las tarifas son pagaderas en el momento de la inscripción. No se envían confirmaciones de programa.
- 2 La tarifa debe pagarse antes de que el niño pueda jugar.
- 3 El supervisor o entrenador de la liga se comunicará con los participantes con las asignaciones del equipo y los horarios de práctica.
- 4 Por favor, no vengas a la práctica hasta que hayas sido contactado.
- 5 No hay reembolsos después de que las prácticas hayan comenzado.
- 6 Los honorarios no son reembolsables.

Regrese forma con el pago. Haga todo tipo de cheques o money order a nombre de Unified Treasury. Correo a: Parks and Recreation, 5033 State Ave., Kansas City, KS 66102. La oficina también tomará dinero en efectivo o tarjetas de crédito.

Por favor imprima

Nombre del padre _____ Nombre del joven _____

Dirección _____ Ciudad/Estado _____

Tele. De casa _____ Tele. De trabajo o celular _____

Deporte _____ Asistene entrenador _____

Localización _____ Años _____ Grado _____ Cumpleaños _____

El inscrito declara que el/ella entiende que el Gobierno Unificado del Condado de Wyandotte/Ciudad de Kansas City (U.G. WYCO/KCK) Departamento de Parques y Recreo no es ni será responsable ni culpable por cualquier enfermedad o daño a las personas o daño a propiedad resultado del programa en el cual el inscribio esta entrando o ha entrado o de su participación en el programa mencionado y el participante y el inscribio, si el participante es menor de edad o con otra discapacidad legal, para siempre descarga de culpabilidad el mencionado U. G. WYCO/ KCK

Departamento de Parques y Recreo, sus empleados, agentes y representantes de todas las demandas de cualquier tipo que el participante o el inscrito o sus herederos, ejecutores, administradores, o personas designadas puedan tener o declaren tener resultando de participación en dicha

programa. También, el suscrito y el participante da autoridad a U.G. WYCO/KCK Departamento de Parques y Recreo para usar, a su discreción cualquier foto(s) (blanca y negro de color) tomadas del participante mientras que participe en el programa y renuncio todas demandas que el participante o el suscrito o sus herederos, ejecutores, administradores, o personas designadas puedan tener resultando de tales foto(s) o reproducciones. Siguiendo entiendo que al firmar esta forma, automáticamente sello mi contrato

***He leído y comprendo la declaración de renuncia, las pólizas de registración y de cancelación. La registración no es válida sin firma.**

Firma del Padre, Madre o Guardián _____ Fecha _____

SPECIAL POPULATIONS



Parks and Recreation strives to provide meaningful and constructive sports and activities for the developmental disabled within our community. Through two focus areas, we address these needs. First, sports which provide meaningful, challenging and attainable experiences through physical fitness programs, sports training and athletic competitions on local, regional and state program level.

We utilize the sporting programs provided by Special Olympics Kansas available year round for our program participants. Each sport has a competition level, we offer the following sports: Basketball, Track & Field, Softball, and Bowling. Each sport has at least two tournaments, one on the Metropolitan level and the other on a State wide level. In our other focus area, we provide classes in exercise, cooking, sewing, and the arts. Also, special activities ranging from themed dances, to fishing trips to mini vacation outings are available to this special segment of our community.

EXPERIENCES CURRENTLY BEING OFFERED:

- Dinner and Movie Nights
- Spring and Fall Picnics
- Valentine's Dance
- Pizza/Pool Party
- Halloween Party
- Spring and Fall Fishing trips
- Christmas Dinner and Dance
- One day educational field trips
- Trips around our region and across the state for athletic competitions
- Classes in crafts, cooking, exercise, and music



Get on our Mailing List so you don't miss out!!!
Call Anne at 573-8331 or Sharon at 573-8356

SUNFLOWER HILLS



Sunflower Hills is an 18 hole Championship golf course designed by renowned architect Roger Packard. Located adjacent to the Kansas Speedway complex, just minutes from downtown Kansas City Missouri.

Golfers of all skill levels will enjoy this challenging course. Sunflower Hills is long and hilly and features large greens. Many trees make control and accuracy important parts of a good round. Sunflower Hills also offers one of the newest and best junior facilities in the Kansas City area. The Junior golf course features six holes with three sets of tees, driving range, putting green and practice bunker.

Amenities Include:

- Six sets of tees
- Zoysia fairways
- Pennncross bent grass greens
- Driving range
- Putting green
- Chipping green
- Practice bunker
- Golf pro-shop
- Snack bar
- 6 hole junior course
- Golf Professionals providing lessons, club fitting and club repair
- Tournament and group outings welcomed
- Home of the Wyandotte County Open. Longest running tournament of its kind in the Greater Kansas City Area.

Open Daily

12200 Riverview Road
Bonner Springs, Kansas 66012
Phone 913-573-8570
Fax 913-721-1025

Email: info@sunflowerhillsgolfcourse.com

2019 Green Fee Rates (does not include a cart)

	Weekday Mon. - Fri.	Weekend Sat. & Sun.	Twilite
Patron	\$22.00	\$30.00	\$16.00
WyCo Resident	\$23.00	\$32.00	\$17.00
Standard Rate	\$27.00	\$35.00	\$18.00
Senior Patron	\$16.00	\$30.00	\$16.00
Senior WyCo Resident	\$17.00	\$32.00	\$17.00
Senior Standard	\$18.00	\$35.00	\$18.00
Junior Patron	\$16.00	\$30.00	\$16.00
Junior WyCo Resident	\$17.00	\$32.00	\$17.00
Junior Standard	\$18.00	\$35.00	\$18.00

Membership Rates & Information

Sunflower Hills Patron Cards

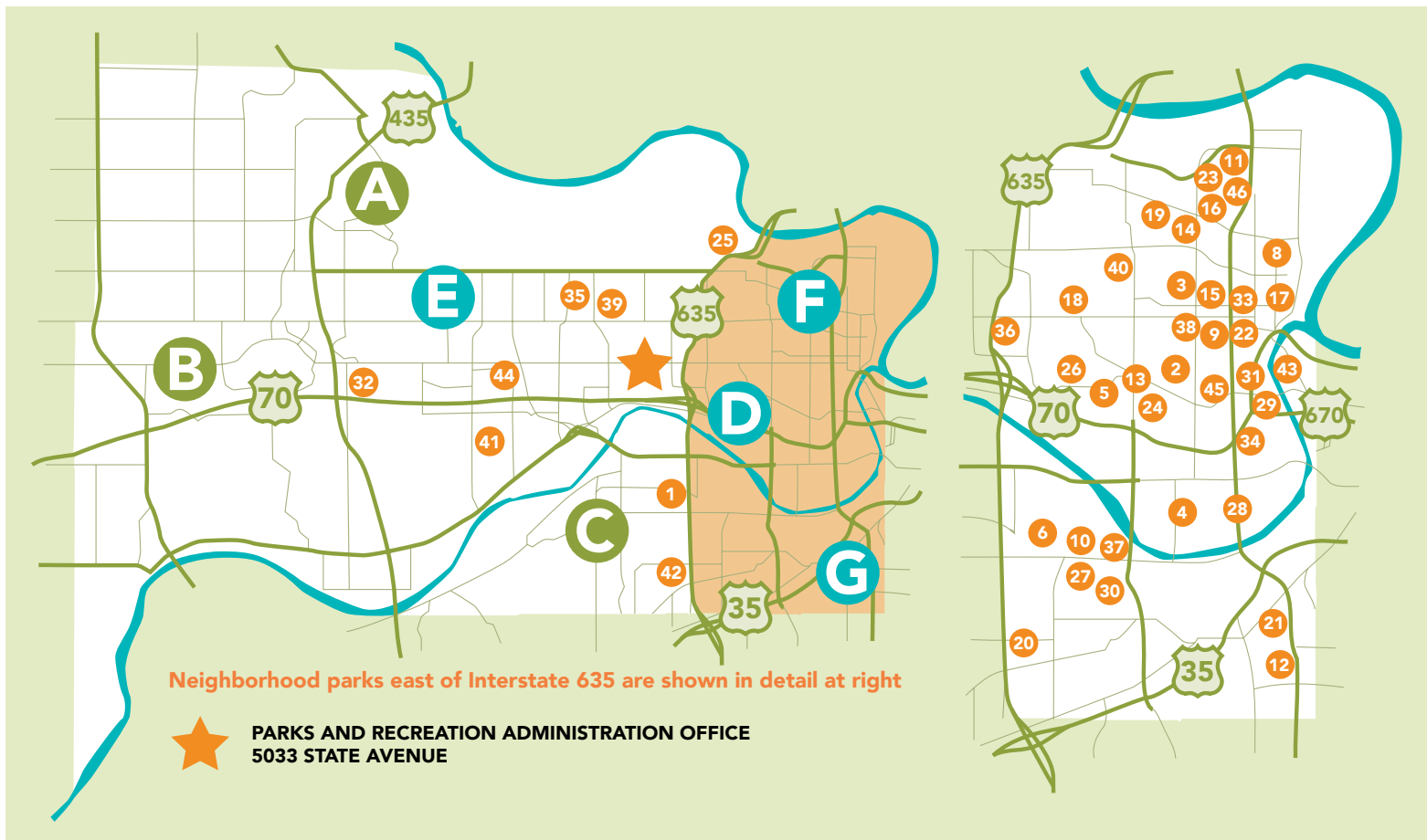
Single Patron	\$110.00
Senior Patron	\$85.00
Junior Patron	\$85.00
Family Patron	\$135.00

Season Passes

	Walking Season Pass	Including Golf Cart
Single Season Pass	\$1,320	\$2,195
Senior Season Pass	\$620	\$1,395
Family Season Pass	\$1,700	\$3,130
Twilite Season Pass	n/a	\$1,145
	Single	Family
Driving Range Pass	\$450.00	\$595.00

REGIONAL, COMMUNITY & NEIGHBORHOOD PARKS





REGIONAL PARKS

- A. Wyandotte County Lake Park** – 91st & Leavenworth Road
- B. Wyandotte County Park** – 126th & State Avenue
- C. Pierson Park** – Douglas & S. 55th Street

COMMUNITY PARKS

- D. City Park** – Park Drive & S. 26th Street
- E. Eisenhower** – Georgia Avenue & N. 22nd Street
- F. Klamm** – Cleveland Avenue & N. 22nd Street
- G. Rosedale** – Mission Road & W. 41st Street

NEIGHBORHOOD PARKS

- 1. Leo Alvey Park** – Metropolitan Avenue & S. 49th Street
- 2. Bethany Park** – Central Avenue & N. 12th Street
- 3. Big Eleven Lake** – State Avenue & N. 11th Street
- 4. Bill Clem Park** – Kansas Avenue & 10th Street
- 5. Clifton Park** – Park Drive & 23rd Street
- 6. Clopper Park** – Powell Avenue & S. 34th Street
- 7. Coronado Park** – Freeman Avenue & N. 52nd Street
- 8. Edgerton Park** – Edgerton Avenue & N. 3rd Street
- 9. Eighth Street Park** – Barnett Avenue & N. 8th Street
- 10. Emerson Park** – Strong Avenue & S. 29th Street
- 11. Fairfax Park** – Manor Crest Drive & N. 7th Street
- 12. Fisher Park** – Fisher Street & W. 39th Avenue
- 13. Flat Iron Park** – Central Avenue & 14th Street
- 14. Heathwood Park** – Parallel Parkway & N. 10th Street
- 15. Huron Park** – Minnesota Avenue & N. 6th Street
- 16. Jersey Creek Park** – N. 5th Street to N. 18th Street on Parallel Parkway
- 17. Kaw Point Park** – Fairfax Traffic Way at the Levee
- 18. Kensington Park** – State Avenue & N. 29th Street
- 19. Mac's Park** – Glendale Avenue & Garfield Avenue
- 20. Matney Park** – Shawnee Drive & S. 40th Street
- 21. Mt. Marty Park** (Rosedale Arch)
Seminary Avenue & Hill Street
- 22. Northrup Park** – Grandview Boulevard & N. 10th Street
- 23. Parkwood Park** – 952 Quindaro Boulevard
- 24. Prescott Park** – Ridge & 13th Street
- 25. Quindaro Park** – Sewell Avenue & N. 34th Street
- 26. Regan Park** – Park Drive & 27th Street
- 27. Ruby Park** – Ruby Avenue & S. 30th Street
- 28. Shawnee Park** – Shawnee Avenue & S. 7th Street
- 29. Simpson Park** – 726 Central Avenue
- 30. Silver City Park** – Lawrence Avenue & S. 25th Street
- 31. Splitlog Park** – 715 Splitlog Avenue
- 32. Stony Point Park** – Elizabeth Avenue & N. 86th Street
- 33. St. Johns Park** – Ann Avenue & N. 4th Street
- 34. St. Margaret's Park** – Homer Avenue & S. 7th Street
- 35. Thomson Park** – Nogard Avenue & N. 59th Street
- 36. Trolley Park** – Central Avenue & 19th Street
- 37. Vega Park** – Metropolitan Avenue & S. 24th Street
- 38. Waterway Park** – Grandview Boulevard & N. 11th Street
- 39. Welborn Park** – Rowland Avenue & N. 55th Street
- 40. Westheight Park** – Wood Avenue & N. 22nd Street
- 41. Riverview Park** – 100 S. 74th Street
- 42. Hope Park** – Crest Drive & S. 47th Street
- 43. Holy Family Park** – Orchard & 6th Street
- 44. Delaware** – Ann Avenue & 74th Street
- 45. Lally Park** – Central Avenue & 10th Street
- 46. Boston Daniel Park** – Waverly Avenue & 8th Street

HELPFUL INFORMATION

WYANDOTTE COUNTY HISTORICAL MUSEUM

Located in the Wyandotte County Park, 126th and State Ave., 631 N. 126th, Bonner Springs, KS
913-573-5002

Exhibit and Archives Hours:

Mon. - Fri., 9:00 am to 4:00 pm

Sat. 9:00 am to 12:00 pm

Closed: Sundays and Holidays

The Wyandotte County Museum staff works to identify, collect, preserve, interpret, and disseminate material and information pertaining to Wyandotte County history in order to assist the public in understanding, appreciating, and assisting in the preservation of the heritage of our city and county.

PROVIDENCE MEDICAL CENTER AMPHITHEATRE 633 N. 130TH, BONNER SPRINGS, KS 66102

Providence Medical Center Amphitheatre is an open-air performance venue located in Bonner Springs, Kansas. Opened in 1984 as Sandstone Amphitheatre, it is a place where concert fans have been making memories for over twenty years. Audience capacity at Providence Medical Center Amphitheatre is 18,000 people, including approximately 3,100 box and reserved seats.

BRIDLE TRAIL

The bridle trail at Wyandotte County Park Lake, 91st and Leavenworth Road, is a scenic 10 mile ride. The trail starts at the 83rd Street entrance next to a horse trailer parking lot.

There is no fee for horses, riders, trailers. The trail is open daylight hours only.

CROSS COUNTRY TRAIL

The Cross Country Trail is located in Wyandotte County Park, 126th and State Avenue. The closest access to the trail is adjacent to Shelter F on 126th by the first entrance into the park. Many schools in the metropolitan area have used this trail for their cross country events.

The trail is mowed summer and fall the public is welcome to use the trail except for days scheduled for school events. If Shelter F is reserved, additional parking for runners is available at the soccer field.

NOXIOUS WEEDS

Herbicides to eradicate those weeds deemed noxious by the Kansas Legislature will be sold starting in the spring of 2019 at the Noxious Weeds office located in front of Shelter 2 at Wyandotte County Lake Park. To purchase the chemicals, you must be a Wyandotte County resident, be able to identify one or more noxious weeds on your property, and have an ID proving your residency. Cash is the only method of payment accepted. For more information, including a list of the current noxious weeds, please visit the Unified Government of Wyandotte County Parks & Recreation website: www.wycokck.org/Parks, and search "Noxious Weeds", or call (913) 573-8392.

VACANT LOTS

To report a vacant lot with overgrown grass or weeds, please call (913) 573-8306. The message should include: the address or cross streets of the vacant lot, your name, and a contact number. Calls will only be returned if more information is needed regarding the lot. Lots will be assessed and handled accordingly. Any overgrown lot that has a house, whether occupied or vacant, on it should be submitted to Code Enforcement at (913) 573-8600.

THE WYANDOTTE COUNTY PARKS FOUNDATION

The Wyandotte County Parks Foundation is a non-profit, 501 © 3 organization that provides opportunities for individuals and organizations to improve the quality of life through the support of parks and recreation services in Wyandotte County Kansas.

To make a donation, please send your contribution to:

The Wyandotte County Parks Foundation

5033 State Avenue

Kansas City, Kansas 66102

Attention: John McTaggart, President

If you have questions, call 913-573-8327

parksinfo@wycokck.org