

WYANDOTTE COUNTY COMMUNITY CORRECTIONS

Agency Overview



COMMUNITY CORRECTIONS HISTORY

- Community Corrections Act (1978)
 - KSA 75-5290 et seq.
 - Grants, advisory boards and comprehensive plans
 - Goal to reduce the number of adult and juveniles committed to state institutions
 - By 1989 community corrections was mandated in all counties
 - Juvenile services were added in 1997

COMMUNITY CORRECTIONS

- Wyandotte County Community Corrections
 - Established 1981
 - Grant Funded by:
 - Kansas Department of Corrections
 - Juvenile Services
 - General Funds from Unified Government
 - Comprehensive Plan
 - Advisory Boards
 - Adult Corrections Advisory Board (K.S.A. 75-5290 et seq.)
 - Juvenile Corrections Advisory Board (K.S.A. 75-7044)

MISSION

Promoting Safety Within OUR Community Through Responsive Risk Reduction

VISION

- *It is the vision of the Department of Community Corrections that criminal behavior is reduced and a sense of public safety restored through the delivery of cost effective and accountable correctional services.*

VALUES

- Integrity
- Evidence Based Practices
- Safety
- Accountability
- Collaboration
- Trust
- Team
- Positive Environment

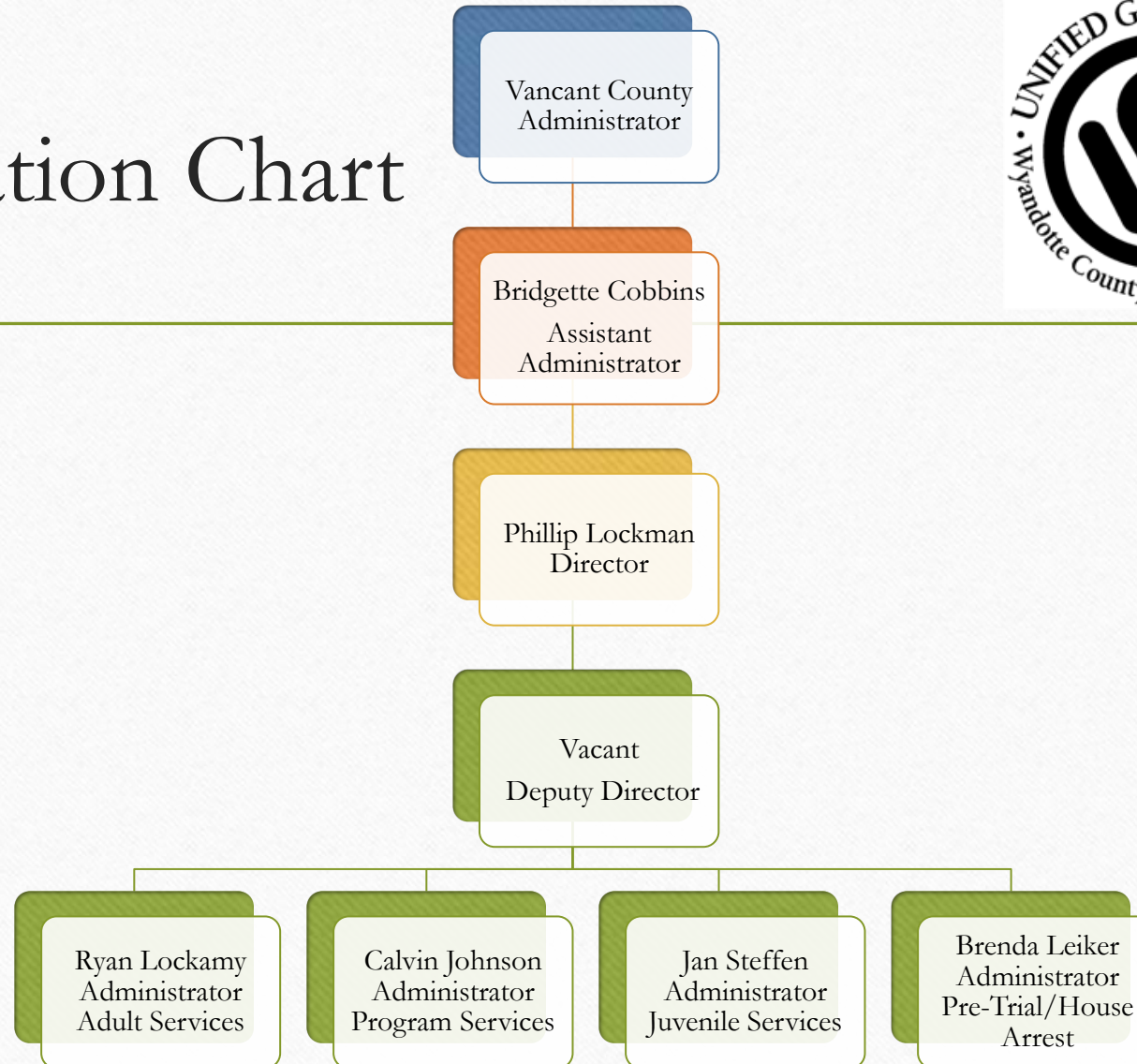
GOALS

- *Develop and Maintain a united and quality organization*
- *Reduce recidivism*
- *Meet Federal, State and Local standards*

Through . . .

Consistency, Communication, Cohesiveness & Leadership

Organization Chart



DIVISIONS

- Juvenile Intensive Supervision Probation and Case Management (JISP/CM)
- Adult Intensive Supervision Probation (AISP)
- Criminal Justice Programs
- Pre-Trial/House Arrest

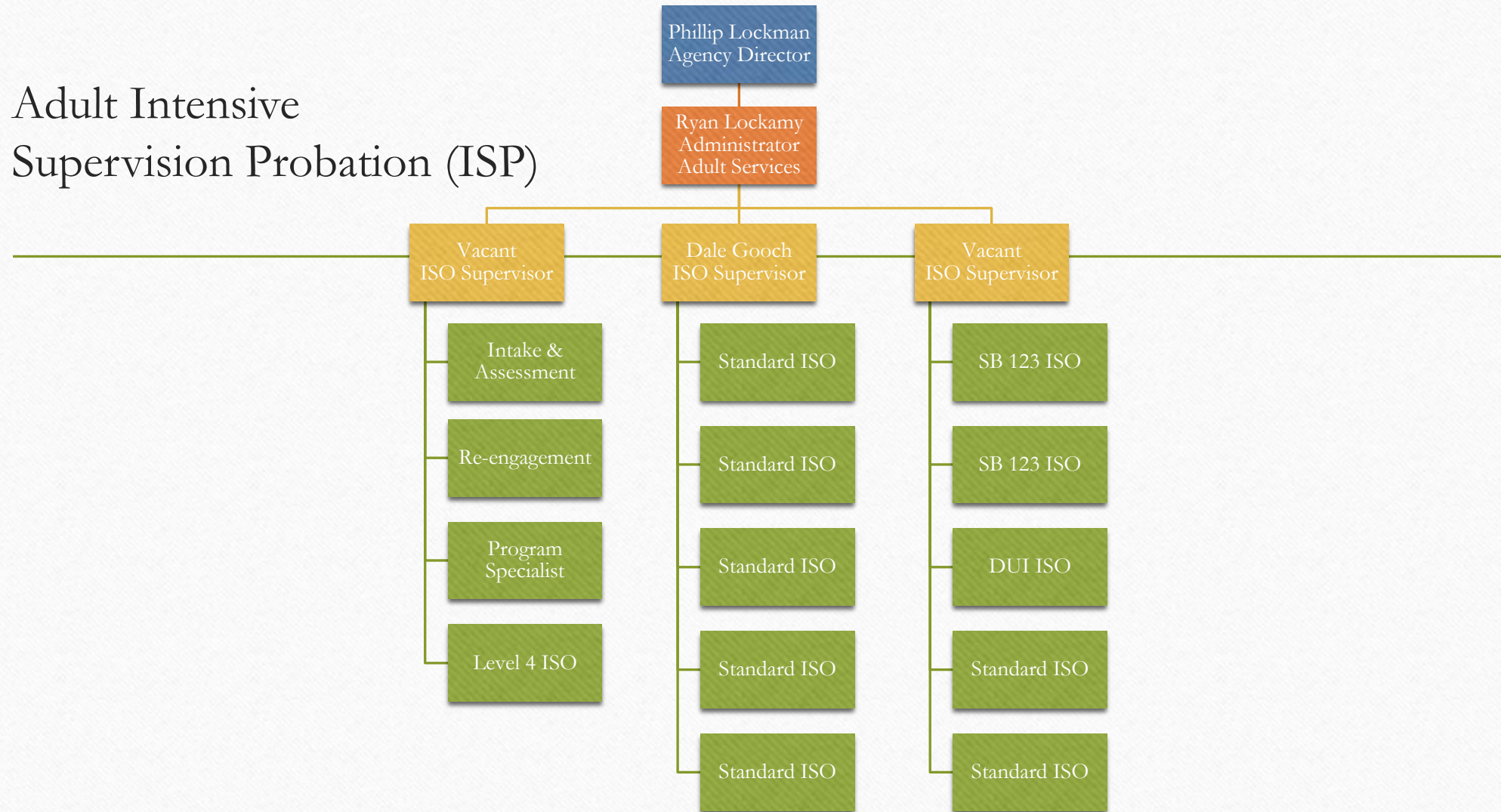
Juvenile Intensive Supervision Probation and Case Management (JISP/CM)

- Oversight by Juvenile Services (KDOC)
- Supervise youth adjudicated as juvenile offenders both in the community and placement
- Intensive Supervision Probation (ISP)
 - Interstate compact
 - Courtesy supervision
- Case Management (CM)
 - Youth in the custody of the Juvenile Justice Authority
 - Correctional Facility
 - YRC and PRTF

Adult Intensive Supervision Probation (AISP)

- Oversight by Kansas Department of Corrections
- Intensive Supervision Probation (ISP)
- Interstate compact
- Courtesy supervision
- SB 123 Supervision
- SB 14 Initiatives

Adult Intensive Supervision Probation (ISP)



Intake Process

- Probationer reports after sentencing/disposition
 - Administrative staff:
 - Initial paperwork and personal information packet completed by probationer
 - Obtain copy of ID
 - Initial LSI-R is scheduled
 - Orientation scheduled
 - Domestic Violence Questioner



Preparing for Exit at Entry

Intake Process

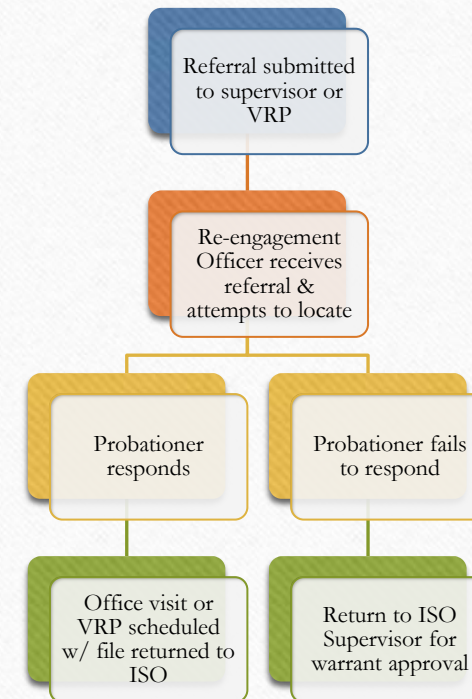
- LSI-R completed:
 - Officer assigned
 - UA color code assigned
 - DNA obtained
 - Picture taken
 - Information added for REJIS
- Assigned officer will be notified
- Case file place in ISO's box

Re-Engagement



Re-Engagement Officer

- Re-engagement of probationers who have been inactive or not reported as directed
- Locating of probationers before/once a warrant is issued

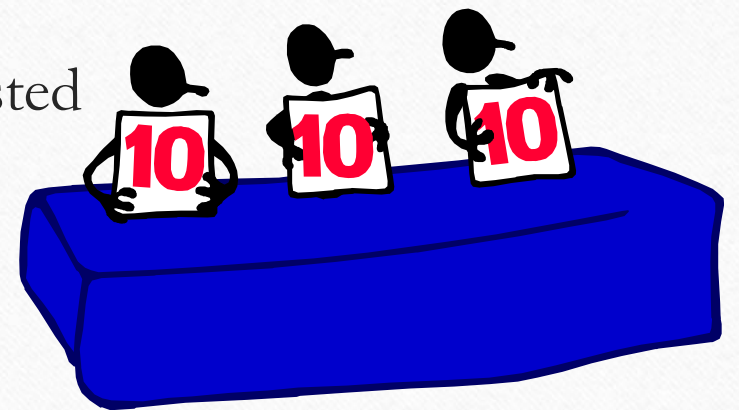


Re-Engagement Officer Duties

- Prior to warrant being issued
 - Database/Internet search
 - Field/Phone Contact
 - Contact Letter
- After warrant is issued
 - Crime Stoppers
 - KCKPD Community Policing Unit
- When probationer is located
 - Schedule VRP hearing (as needed)
 - Make appropriate referrals
 - Return case to ISO

Violations Review Panel (VRP)

- Internal function of Community Corrections
- “Clearinghouse” for all cases before a motion to revoke or intermediate sanction is filed
- Staffing to ensure that interventions have been exhausted



Violations Review Panel

- Meeting with probationer to discuss barriers to supervision
- Compliance Plans
- Staffing for court recommendation

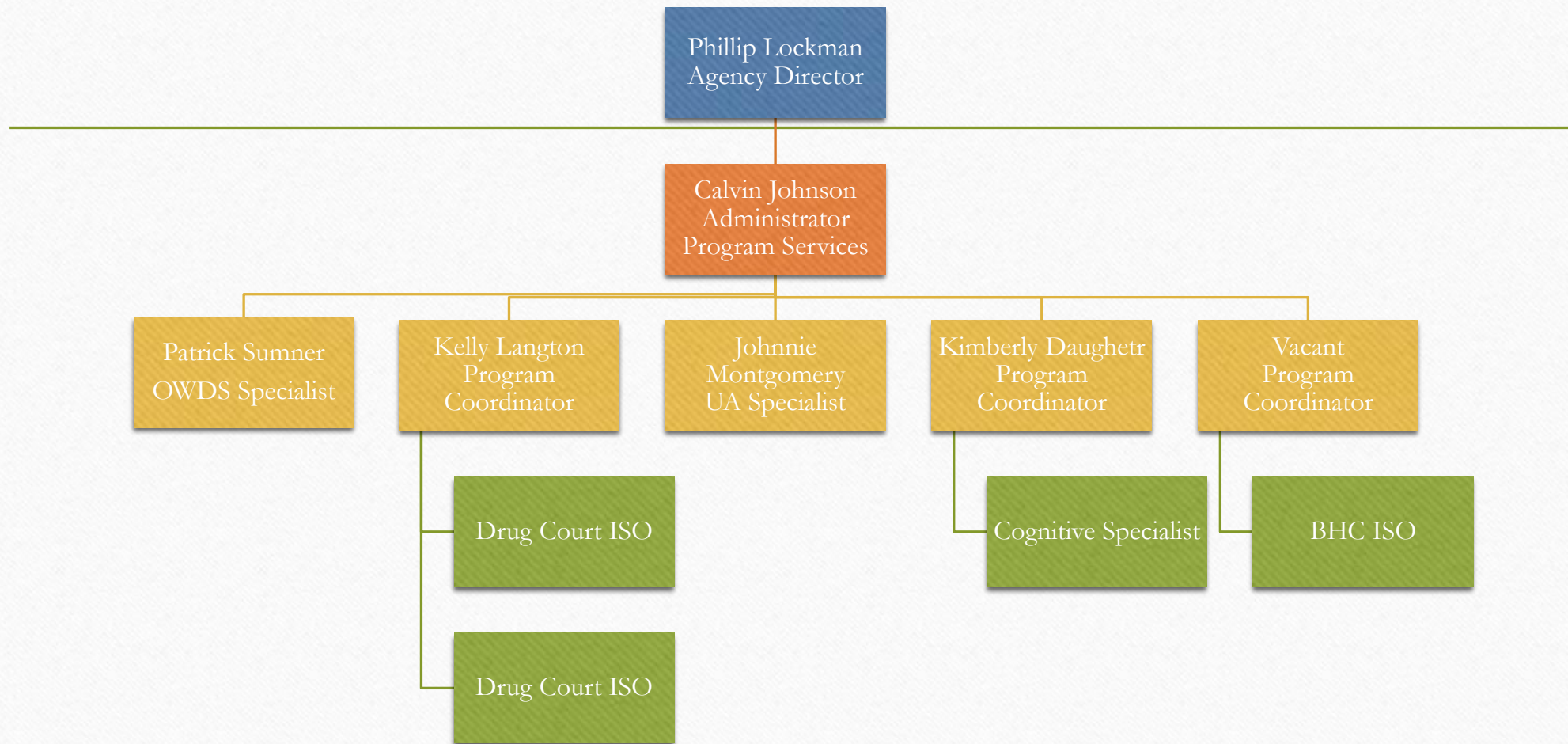
Senate Bill 123

- Mandatory drug treatment (K.S.A. 4729)
- Presentence Investigation
 - Substance abuse assessment
 - Risk/Needs assessment
- Eligible probationers are sentenced up to 18 months supervision and treatment
- Supervised by Community Corrections
- Treatment is paid for by the State
- Probationer pays \$300 SB 123 fee in addition to assessed court costs and fines

Criminal Justice Programs (CJP)

- Adult Drug Court
- Behavioral Health Court
- Offender Work Force Development
- Substance Abuse Treatment/Testing
- Cognitive Services

Criminal Justice Programs (CJP)



UA Specialist

- Collects all UA's for adult male probationers
 - Female ISO's rotate UA duty (for adults)
 - Enters all UA results and no shows for Adult probationers
- Coordinates the Drug Line (random color code)
- Disseminates test results to all staff
- UA's for juveniles are collected by the assigned officer

Drug Court

- Specialized adult caseload
- Targeted population
- Comprehensive program with “wrap around” services for the probationer
 - Substance abuse treatment
 - Educational/Vocational assistance
 - Family therapy
 - Mental health services
 - Transportation assistance
 - Case management
 - Etc.



Drug Court – Evidence Based Practices

- Cognitive-behavioral treatment
- Motivational Interviewing
- Stages of Change Model
- Objective screening and assessment
- Individualized treatment plans
- System of incentives and sanctions

Team Approach

- Each member offers a unique perspective and skill
 - Judge
 - Assistant District Attorney
 - Defense Council
 - ISO
 - Substance abuse provider
 - Cognitive facilitator
 - Sheriff's deputy

Phase System

- Phase length
- Court hearings
- Reporting
- Drug/Alcohol Testing
- Substance Abuse Treatment
- TRACK Cognitive Program
- Curfew
- Employment/Education
- Community Service
- Housing
- Restitution/Fees
- Sober Time
- Promotion/Graduation Requirements

DUI Supervision

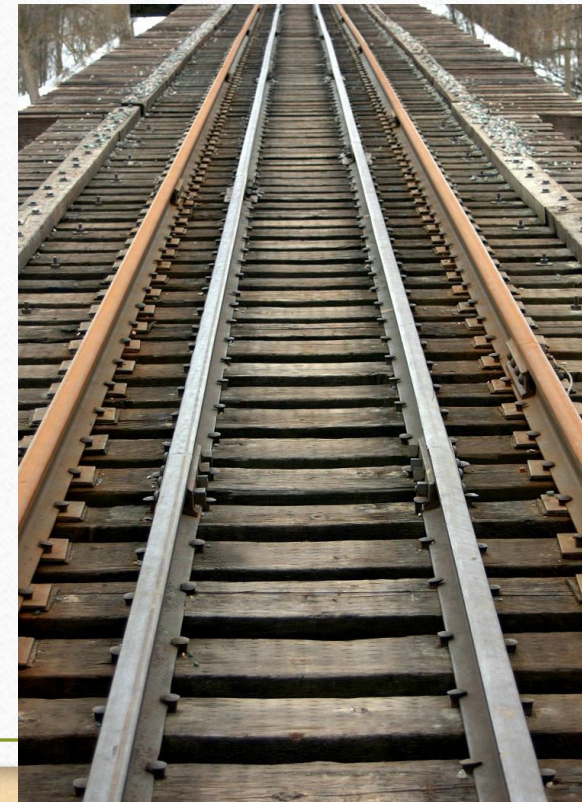
- Any 3rd or subsequent DUI, with an offense date after 07/01/11 will be supervised by Community Corrections or Court Services, as determined by the LSI-R
- Minimum Sentence
 - \$1750 fine
 - 48 hours jail time
 - 192 hours of work release (not including actual work time)

or

 - 240 hours electronic monitoring (not including time away from the home)
 - Interlock ignition device

Cognitive Programming

- T.R.A.C.K.
- Examine Thinking and Behaviors
- Dosage specific
- Assessment
- TruThought
- Delaney Pieper
TRACK Coordinator
- Monica Tyrrell
TRACK Facilitator-Adult/Juvenile

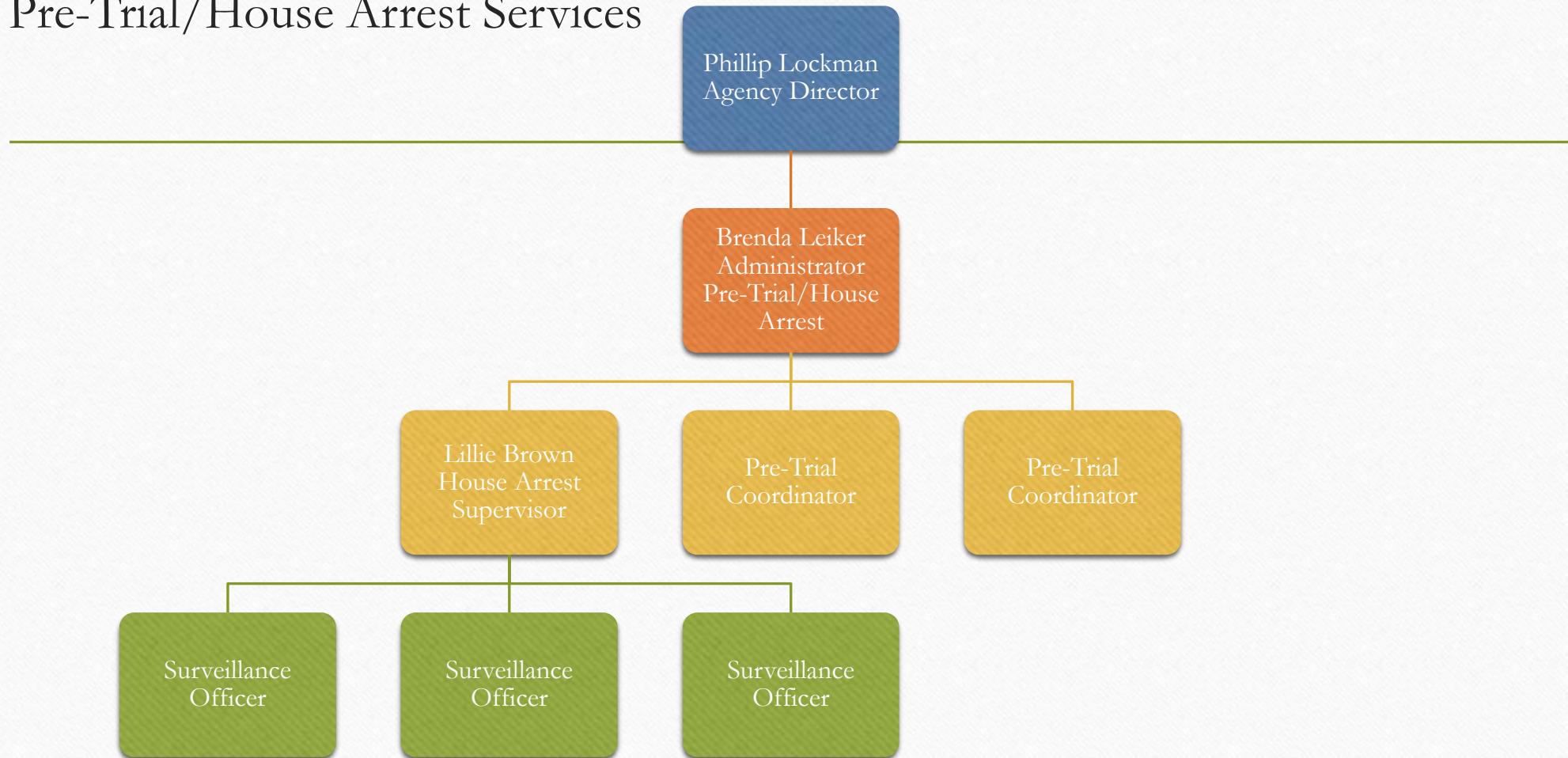


Pre-Trial/House Arrest Services

- Adult Pre-Trial Bond Supervision
-
- House Arrest (Adult and Juvenile)



Pre-Trial/House Arrest Services



Pre-Trial/House Arrest Services

- Screening of defendants for potential release from detention (or in lieu of detention) as authorized by the Judge
- Establishing conditions of supervision (i.e. face to face contacts , urinalysis, breath analysis ,verification of residency/activities, etc.)
- Documenting defendant's behavior and activities
- Reporting defendant's level of compliance to the Judiciary at each subsequent court date

Pre-Trial/House Arrest Services

- Providing ongoing communication to other departments (ISO's, CSO's) as to the level of compliance with program rules
- Providing community resource brokerage to promote defendant's self sufficiency and responsibility
- Responding quickly to violations and surrendering bond or obtaining warrant when there is significant offender non-compliance

Pre-Trial Coordinators

- Review of daily admission to Adult Detention Center and make recommendations regarding release
- Establish conditions of supervision
- Actively supervise caseloads

Surveillance Officers

- Conduct screenings for House Arrest program eligibility
 - Screenings take place in office / detention centers
 - Referral sources:
 - Municipal (KCK, Bonner Springs, Edwardsville)
 - Wyandotte County Adult District Court
 - Wyandotte County Juvenile District Court
- Hookup Process
- Home/Community Visits
- Case Documentation

Administrative Staff

- Clerical Support
- Records Management
- REJIS Coordinator (Records Checks)

